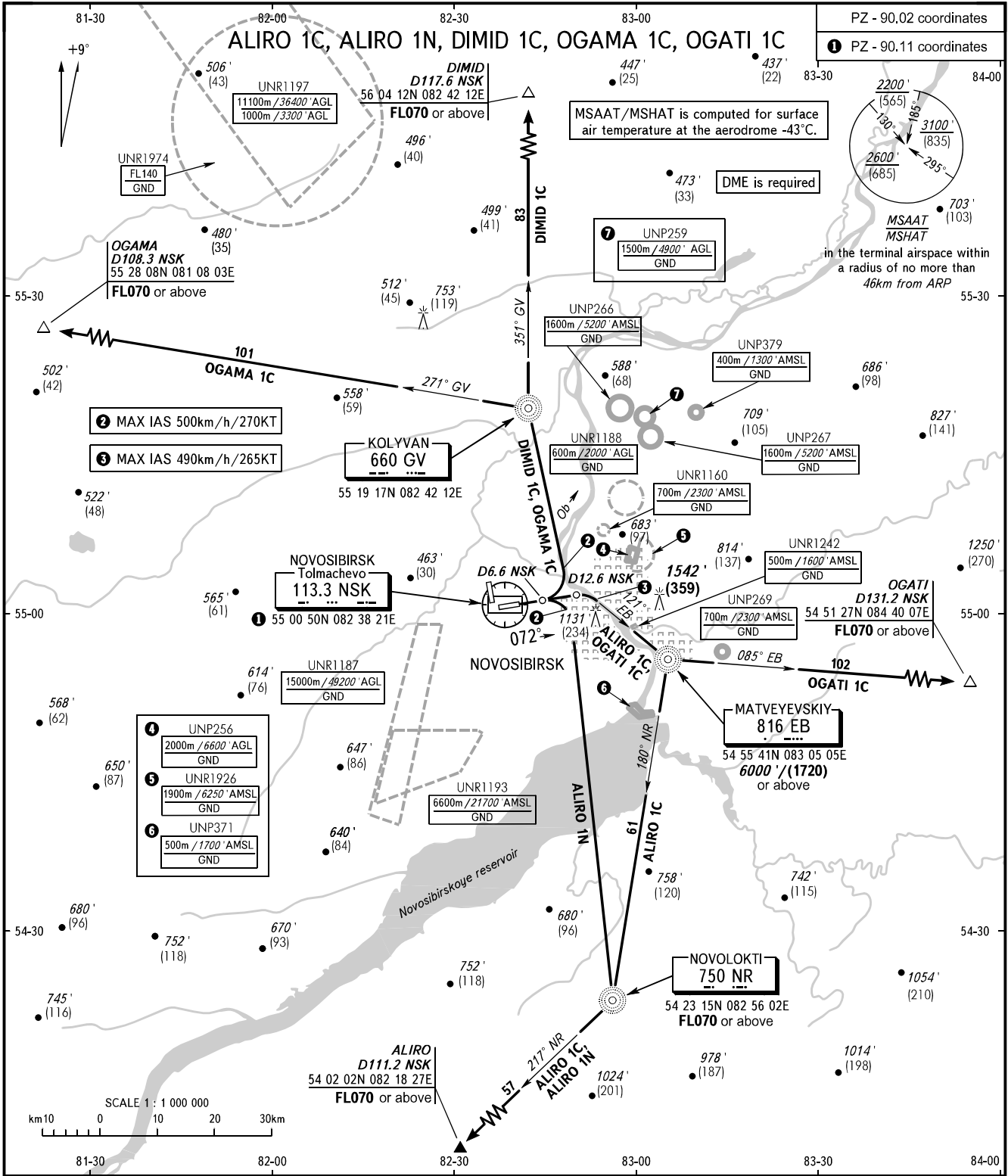


STANDARD DEPARTURE CHART  
INSTRUMENT (SID) - ICAO

TRANSITION ALT : **6000'**  
TRANSITION HGT : **(1720)**

NOVOSIBIRSK, RUSSIA  
TOLMACHEVO  
RWY 07



TOWER	<b>118.500</b>	MINIMUM CLIMB GRADIENTS (due to airspace structure): ALIRO 1C: 5.0% up to FL070; OGATI 1C: 4.9% up to 6000'/(1720); ALIRO 1N: 3.9% up to FL070.
RADAR	<b>122.000</b>	
APPROACH	<b>127.500</b>	

BEARINGS AND TRACKS ARE MAGNETIC  
ALTITUDES IN FEET, HEIGHTS IN METRES  
ELEVATIONS IN METRES AND FEET  
DISTANCES IN KILOMETRES

Alt set: -QNH(QFE on req);  
-hPa(mm on req).

CHANGE: UNP379