

ICAO - INSTRUMENT APPROACH CHART

REMARK: RWY 15 traffic pattern right.

APP Roma Arrivals
Roma Director
TWR Ciampino TWR
ATIS Ciampino Arrival and Departure Information

125.500
131.250
120.500 (119.400)
122.425

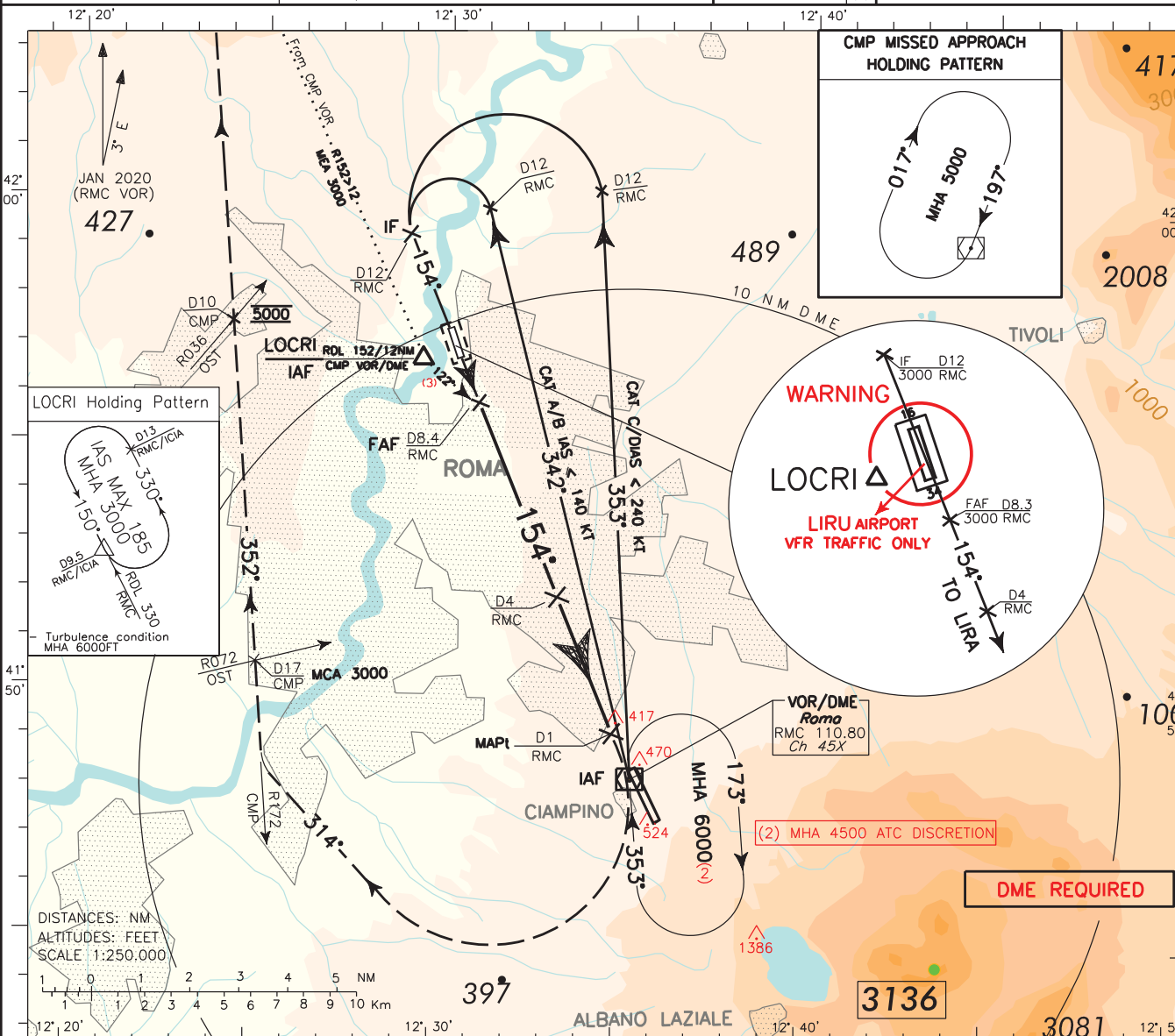
AD ELEV 427

LIRA

ROMA/CIAMPINO
VOR-Y RWY 15

DOC.8168-ED.6-2014-AMDT 8

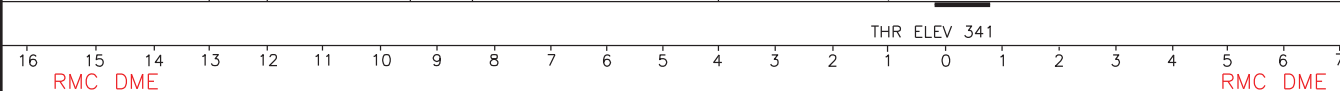
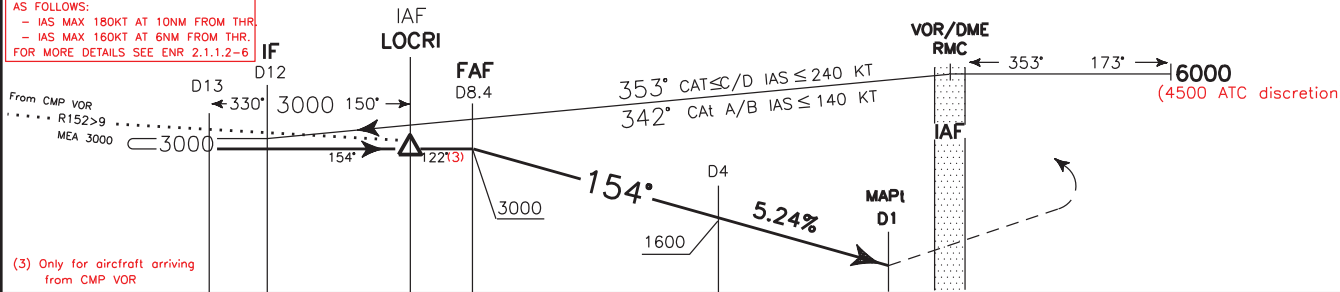
CHANGE: ROM VOR/DME RENAMED RMC



TRANSITION ALT 6000

MISSED APPROACH: As soon as possible, not before MAPt, turn right (IAS MAX 185 kt during turn), on TR 314° to intercept and follow RDL 172 CMP VOR bound to CMP VOR/DME climbing to 5000 ft. Cross RDL 172/17 NM CMP VOR/DME (RDL 072 OST VOR) at 3000 ft or above. Cross RDL 172/10 NM CMP VOR/DME (RDL 036 OST VOR) at 5000 ft steady.

WARNING: PILOT SHALL PAY ATTENTION TO COMPLY WITH SPEED RESTRICTION AS FOLLOWS:
- IAS MAX 180KT AT 10NM FROM THR
- IAS MAX 160KT AT 6NM FROM THR
FOR MORE DETAILS SEE ENR 2.1.1.2-6



OCA (OCH)	A	B	C	D
VOR	750 (409)			
CIRCLING (1)	1100(673)	1200(773)	1700(1273)	1830(1403)

REMARK (1): CIRCLING TO RWY33 FLW INSTR APCH PROC RWY15:
- IS ALLOWED ONLY IF PAPI AND RTIL RWY33 ARE AVBL.
- IS ALLOWED ACCORDING TO REGULATION PUBLISHED IN AIP AD 2 LIRA - ITEM 20 LOCAL FLIGHT RESTRICTIONS.
- IS ALLOWED ONLY W OF THE FIELD.
- DUE TO SIGNIFICANT OBST SHALL BE PERFORMED W/ 4NM RMC DME WITHOUT OVERSHOOTING EXTENDED RCL. MIL AND STATE FLT NOT AFFECTED.

FT PER MIN	GS	FAF MAPt 7NM	DIST 7DME	ALT(HGT) 2564(2223)
425	80	5:15	6DME	2246(1905)
531	100	4:11	5DME	1928(1587)
637	120	3:30	4DME	1610(1269)
743	140	3:00	3DME	1292(951)
849	160	2:37	2DME	974(633)

