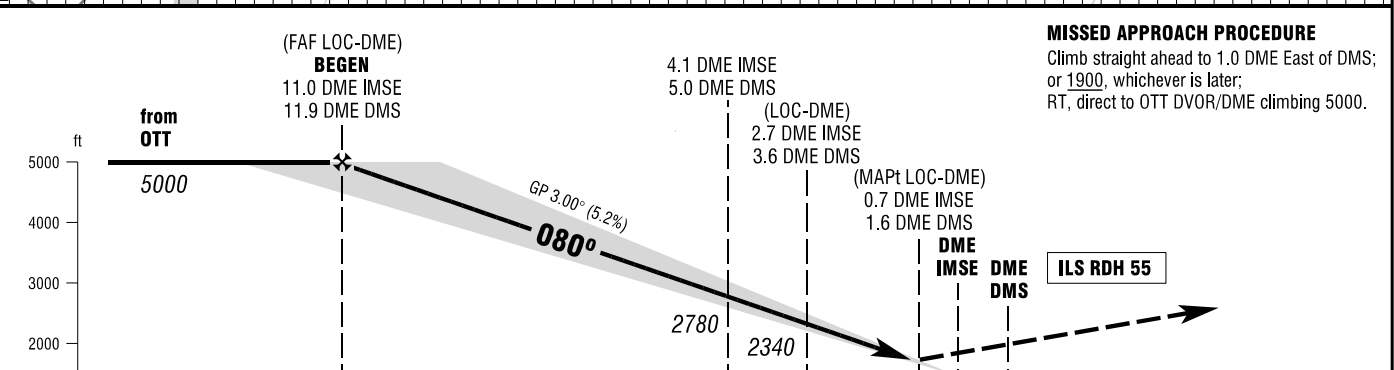
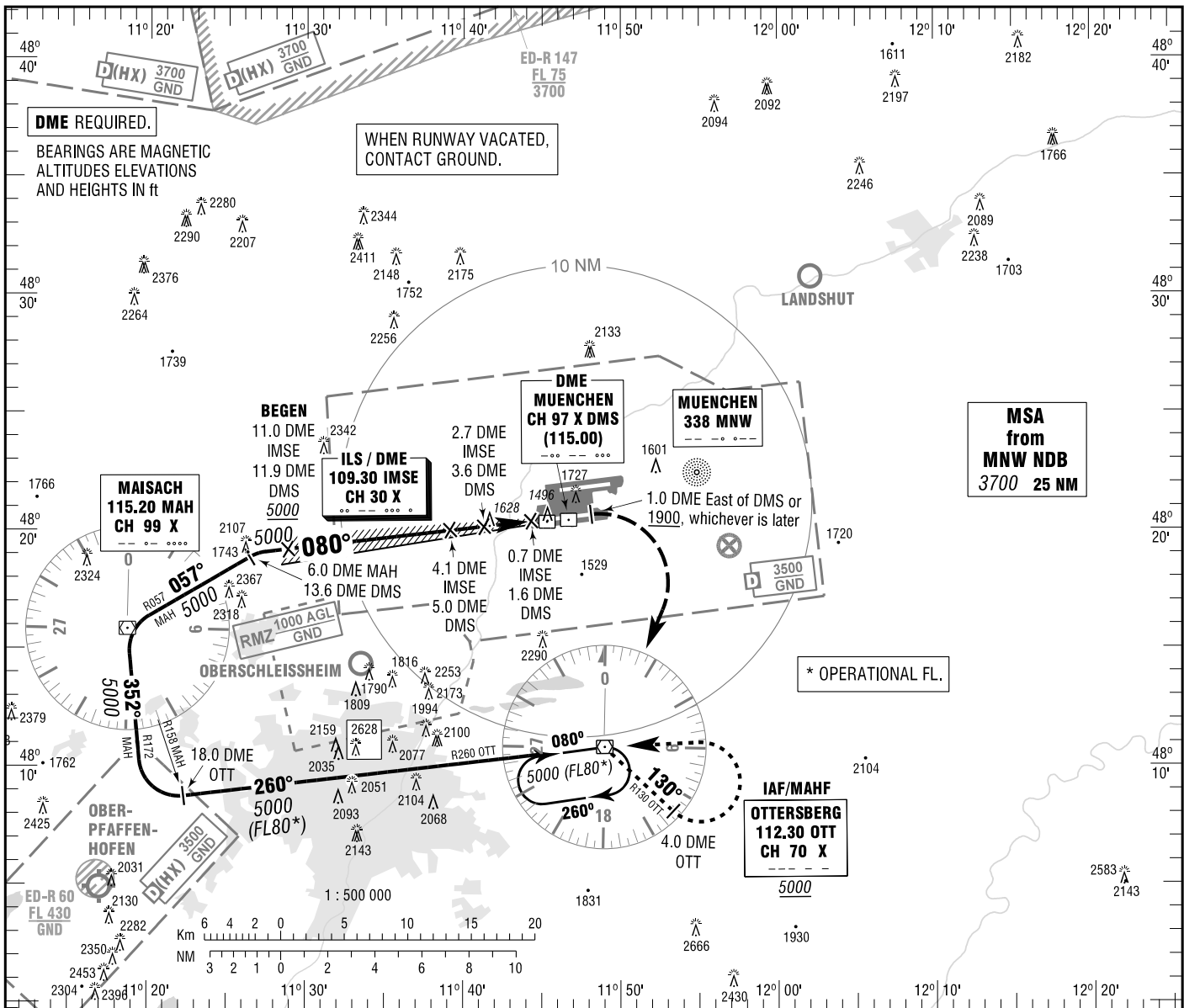


INSTRUMENT APPROACH CHART - ICAO	MUENCHEN ATIS	123.130	MUENCHEN GROUND	121.830 (S)	ELEV 1487 OCH RELATED TO THR 08R ELEV 1486	VAR 3° E	MUENCHEN ILS CAT II & III or LOC RWY 08R
	MUENCHEN RADAR	127.955 (S)	MUENCHEN APRON	121.710			
	MUENCHEN ARRIVAL	132.305 (S)		121.780			
	MUENCHEN TOWER	120.505 (S)		121.930			



OCA (OCH)	A	B	C	D	D _i
ILS/DME CAT I	1628 (142)	1638 (152)	1648 (162)	1657 (171)	
ILS/DME CAT II	1539 (53)	1556 (70)	1569 (83)	1582 (96)	
LOC-DME	1880 (390)	1880 (390)	1880 (390)	1880 (390)	

DME IMSE	10	9	8	7	6	5	4	3	2	1
DIST THR	9.8	8.8	7.8	6.8	5.8	4.8	3.8	2.8	1.8	0.8
ALTITUDE	4660	4340	4020	3710	3390	3070	2750	2430	2110	1800

Timing not authorized for defining the MAPt.

GS	kt	80	100	120	140	160	180
11.0 DME IMSE - THR (10.9 NM)	MIN:SEC	8:11	6:32	5:27	4:40	4:05	3:38
Rate of descent (5.2%)	ft / MIN	420	530	640	740	850	960

CAT III APPROVED (MNM RVR 75M).

Correction: Callsign, obstacles revised.