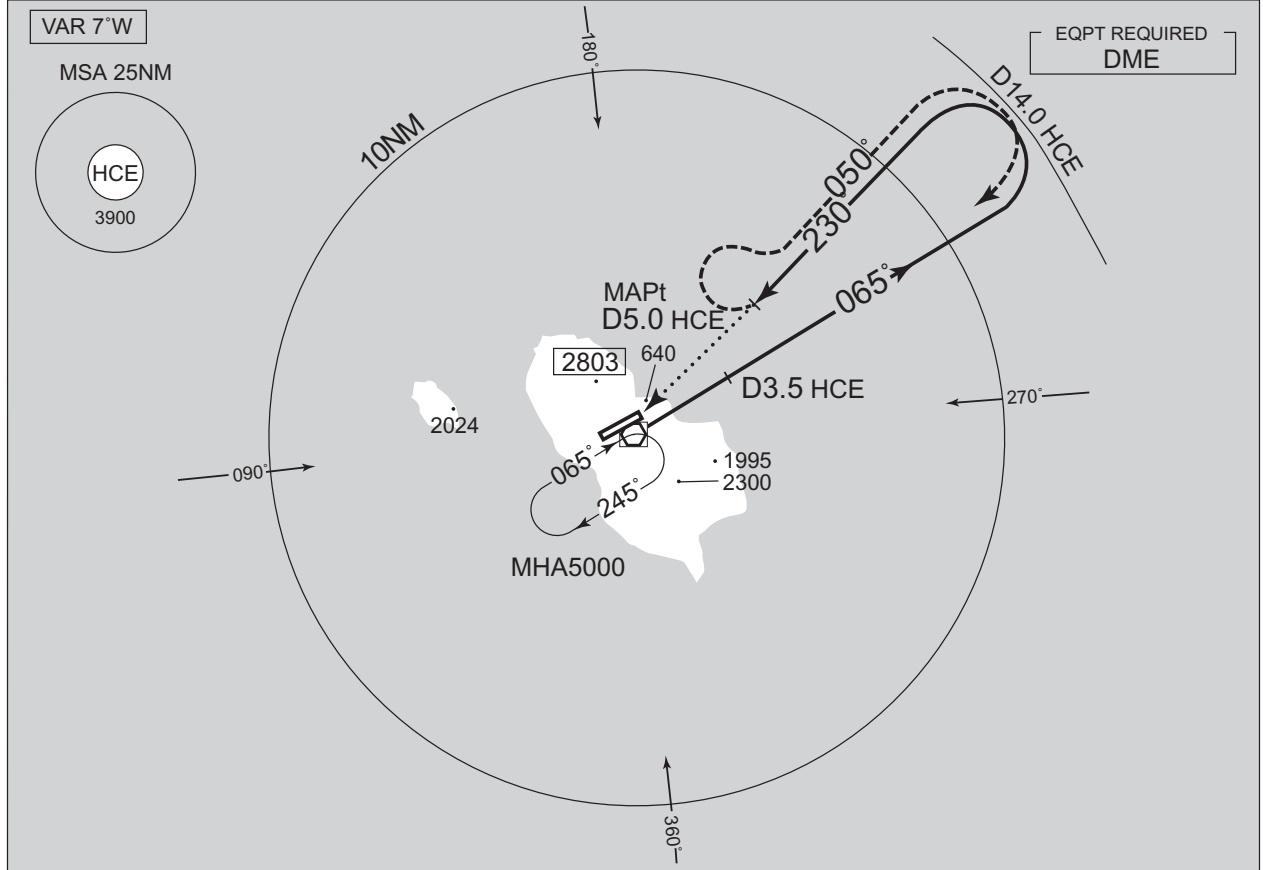


INSTRUMENT APPROACH CHART

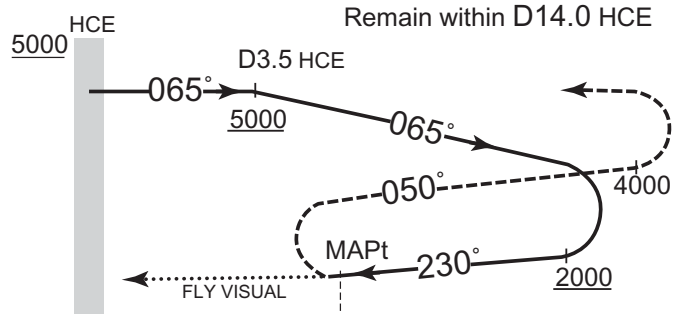
RJTH / HACHIOJIMA

VOR A (For RWY 26)

TOKYO CONTROL 125.9 – 134.15 318.2 – 227.3	HACHIOJIMA VOR/DME 116.65 HCE CH-113Y 33°06'52"N/139°47'19"E	HACHIOJO RADIO 118.7 AFIS provided by New Chitose Airport Office	NO RADAR
--	---	---	----------



**MISSED APPROACH**  
Turn right, climb to 4000FT via HCE R050, turn right, proceed to HCE VOR/DME and hold at 5000FT. Contact HACHIOJO RADIO.



DME to HCE 5.0  
NM to THR 4.7

MINIMA THR elev. 284 AD elev. 301

CAT	MDA(H)	Facilities			
		Full	Intermediate	Basic	Nil
A	800 (516)	VIS		VIS	
B		-			
C					
D					
		4800			

MINIMA APPLICATION CRITERIA in AD1.1.6.10.1.4 are not applicable.

CHANGE: PROC renamed.