

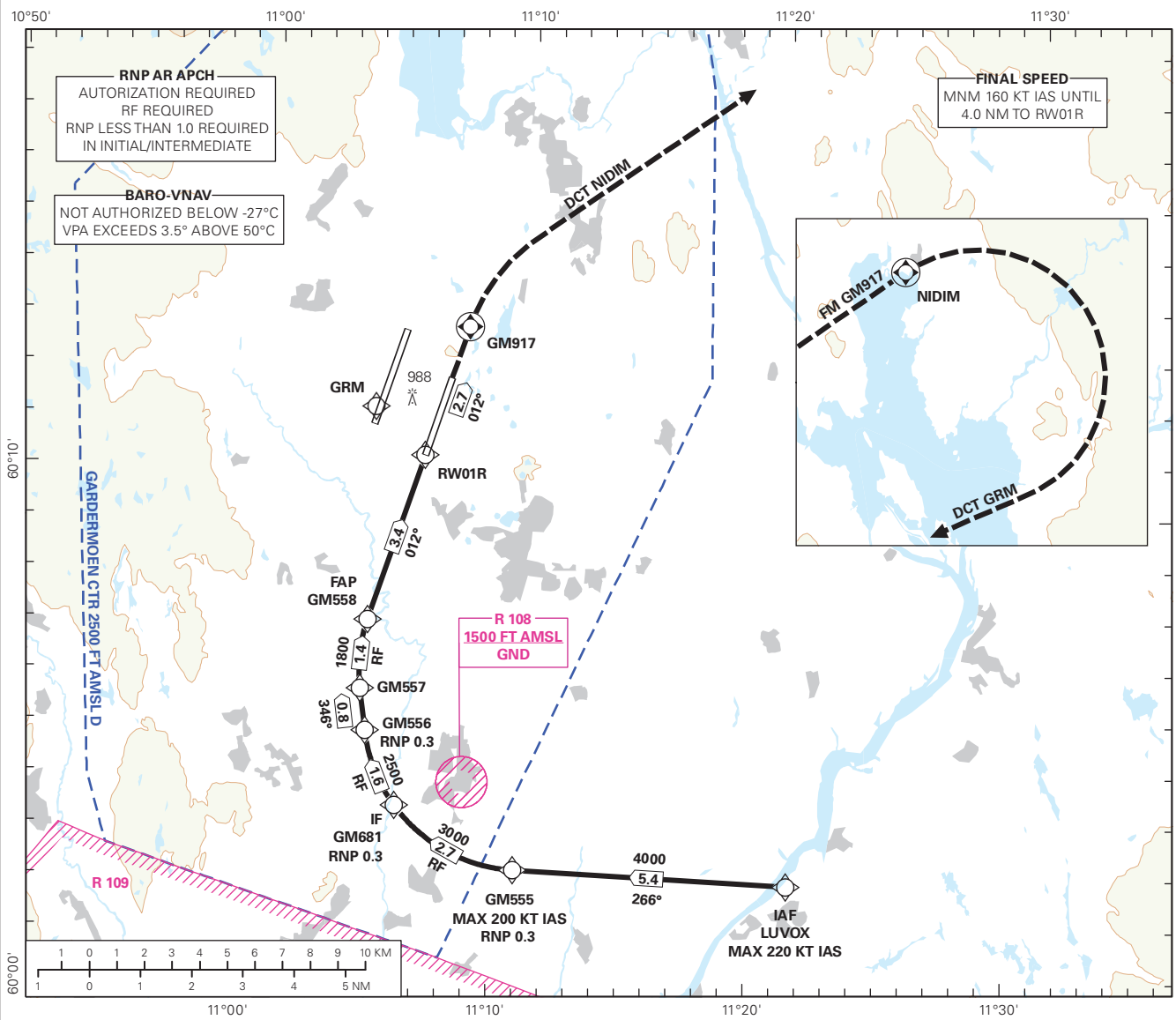
INSTRUMENT APPROACH CHART - ICAO PLAN VIEW SCALE:1:250 000

OSLO

**GARDERMOEN
RNP E RWY 01R (AR)**

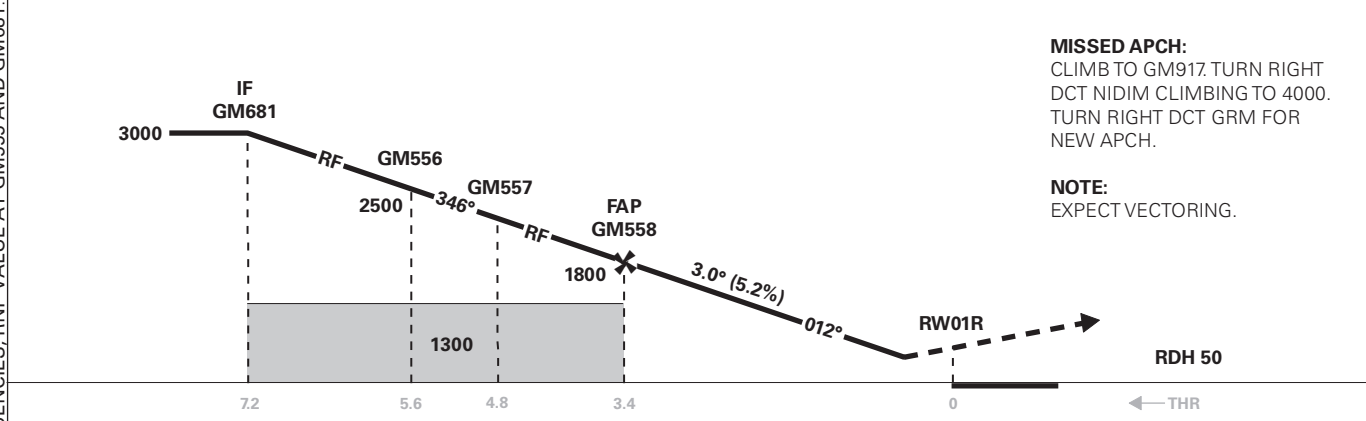
**TRANSITION ALTITUDE
7000**

<div style="border: 1px solid black; border-radius: 50%; width: 40px; height: 40px; display: flex; align-items: center; justify-content: center; margin: 0 auto;"> 3₉ </div> <p>MSA 25 NM ARP</p>	ATIS: 126.130	AD ELEV: 682	
	APP: 118.480 120.455	THR ELEV: 671	DIST IN NM
	DIR: 136.405 (119.980) FIN: 128.905	HGT RELATED TO THR RWY 01R	ELEV, ALT AND HGT IN FT
	TWR: 120.105 (123.330)	CIRCLING HGT RELATED TO AD ELEV	
	GND: 121.905	BEARINGS ARE MAGNETIC - VAR: 4° E (2020)	



ATS AIRSPACE CLASSIFICATION: REF ENR 1.4.

DIST TO RWY 01R	9	8	7	6	5	4	3	2
ALT (HGT)	-	-	-	-	-	-	-	-



CAT OF ACFT	A				B		C		D	
	RNP 0.3 (2.5%*)	1007 (336)	1027 (356)	1046 (375)	1065 (394)	RNP 0.3 (5.0%*)	955 (284)	980 (309)	998 (327)	1021 (350)
OCA(H) STRAIGHT - IN										
CIRCLING		1280 (598)		1530 (848)			1630 (948)			

NOTE: CIRCLING E OF AD ONLY. *MNM MISSED APCH CLIMB GRADIENT.

CHANGES: FREQUENCIES, RNP VALUE AT GM555 AND GM681.