

FORT LIBERTY, NORTH CAROLINA

ILS or LOC RWY 23

LOC I-POB 110.9	APCH CRS 228°	Rwy ldg TDZE Arprt Elev 7501 200 225	[USAF]	POPE AAF (KPOB)
---------------------------	-------------------------	--	--------	-----------------

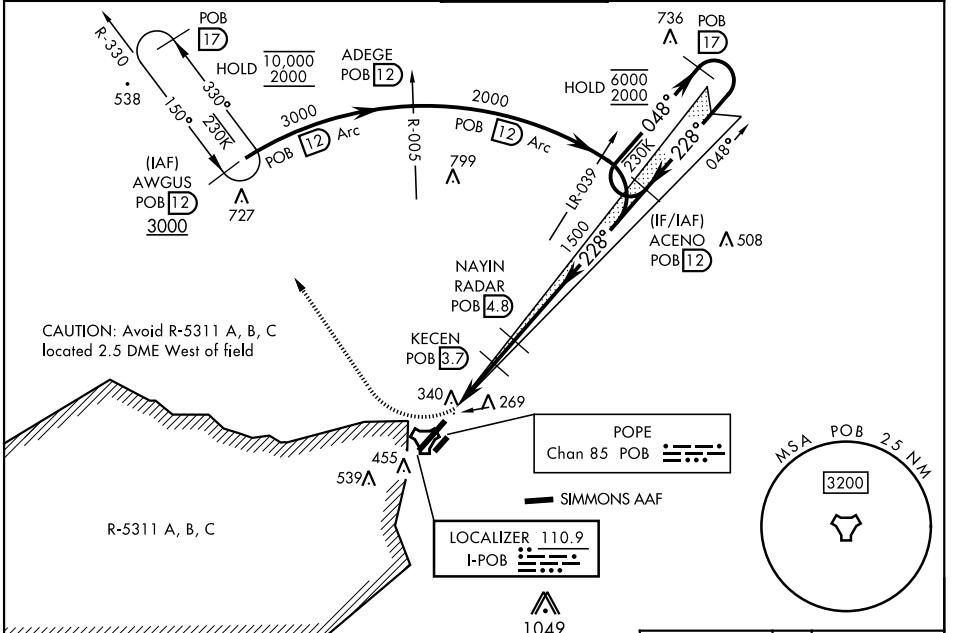
RADAR required

ALSF-1

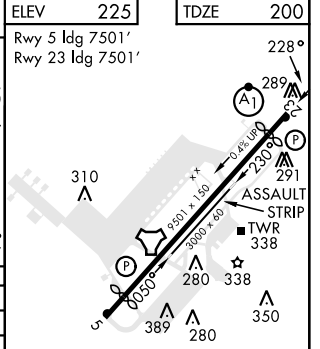
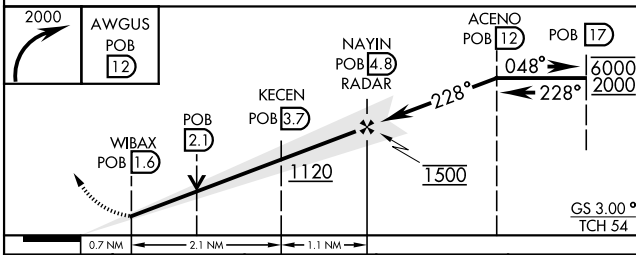
MISSED APPROACH: Climbing right turn to 2000 direct AWGUS and hold. For acct not equipped with TACAN or suitable RNAV system with GPS: Climbing right turn to 2000 hdg 350°, expect RADAR vectors.

* When ALS inop, increase RVR to 40 and vis to 3/4 mile.
 ** When ALS inop, increase CAT AB RVR to 55 and vis to 1 mile; CAT CD RVR to 60, vis to 1 1/8 miles.
 *** Circling not authorized SE of Rwy 5-23.
 **** When ALS inop, increase CAT AB RVR to 55 and vis to 1 mile; CAT CD vis to 1 1/4 miles.

ATIS 132.3 353.725		FAYETTEVILLE APP CON 125.175 285.575 (271° - 090°) 133.0 290.25 (091° - 270°)		TOWER 135.025 291.1	GND CON 124.55 275.8	CLNC DEL 124.55 275.8
------------------------------	--	---	--	-------------------------------	--------------------------------	---------------------------------



EMERG SAFE ALT 100 NM 5300



CATEGORY	A	B	C	D
S-ILS 23 *	400/24		200	(200-1/2)
S-LOC 23 **	620/24	420 (500-1/2)	620/40	420 (500-3/4)
CIRCLING ***	760-1	542 (600-1)	920-2 702 (800-2)	1060-2 3/4 842 (900-2 3/4)
WITHOUT LAST STEPDOWN FIX				
S-LOC 23 ****	640/24	440 (500-1/2)	640/45	440 (500-3/4)

HIRL Rwy 5-23
LIRL Rwy 050°-230°
REIL Rwy 5

FAF to MAP 3.2 NM

Knots	60	90	120	150	180
Min:Sec	3:12	2:08	1:36	1:17	1:04

FORT LIBERTY, NORTH CAROLINA 35° 10'N-79° 01'W POPE AAF (KPOB)

Amdt 8 07OCT21

ILS or LOC RWY 23

SE-2, 20 MAR 2025 to 17 APR 2025

SE-2, 20 MAR 2025 to 17 APR 2025