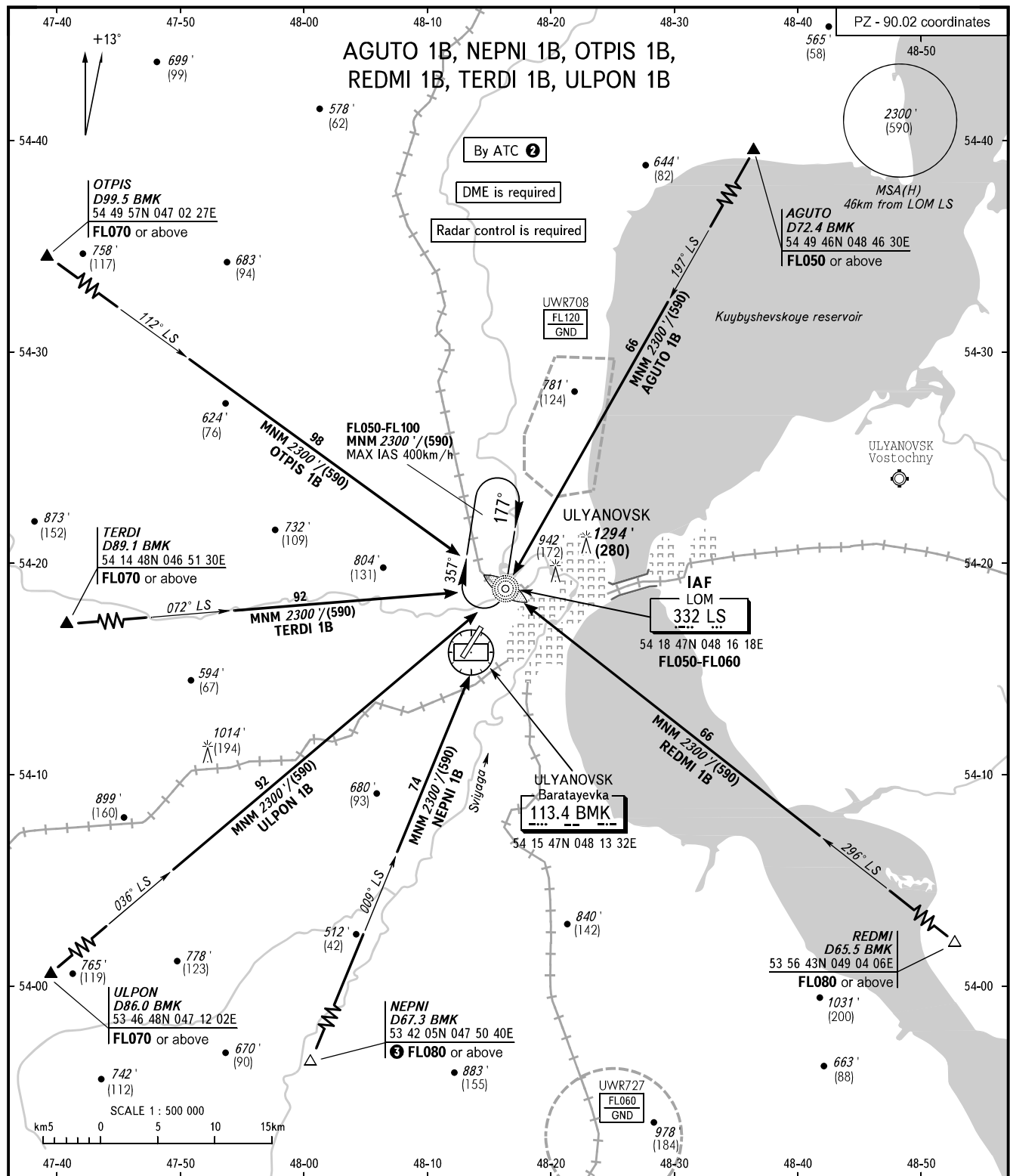


STANDARD ARRIVAL CHART
INSTRUMENT (STAR) - ICAO

ULYANOVSK, RUSSIA
BARATAYEVKA
RWY 20

TRANSITION
LEVEL : ①



APPROACH	127.300
RADAR	120.800
START	120.400

BEARINGS AND TRACKS ARE MAGNETIC ALTITUDES IN FEET HEIGHTS IN METRES ELEVATIONS IN FEET AND METRES DISTANCES IN KILOMETRES	Alt set: -QNH(QFE on req); -hPa(mm on req).
--	--

- ① TRANSITION LEVEL:
- FL050 when QNH is 1013 hPa (760mm mercury column) or above;
- FL060 when QNH is 977 hPa (733mm mercury column) or above,
but less than 1013 hPa (760mm mercury column);
- FL070 when QNH is less than 977 hPa (733mm mercury column).
- ② When restricted area UWR708 is active.
- ③ FL070 - by ATC.

CHANGE: Heading, HGT