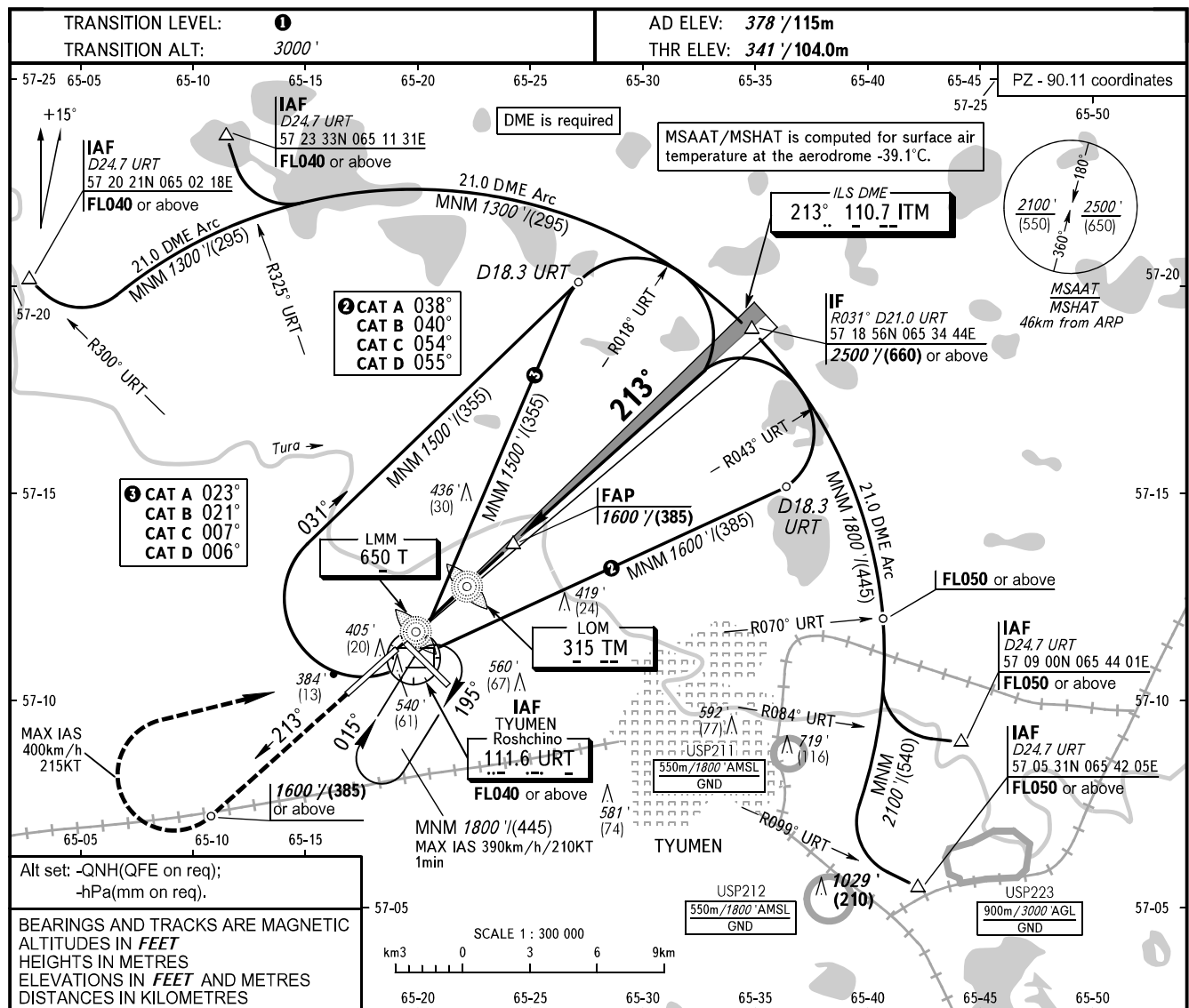


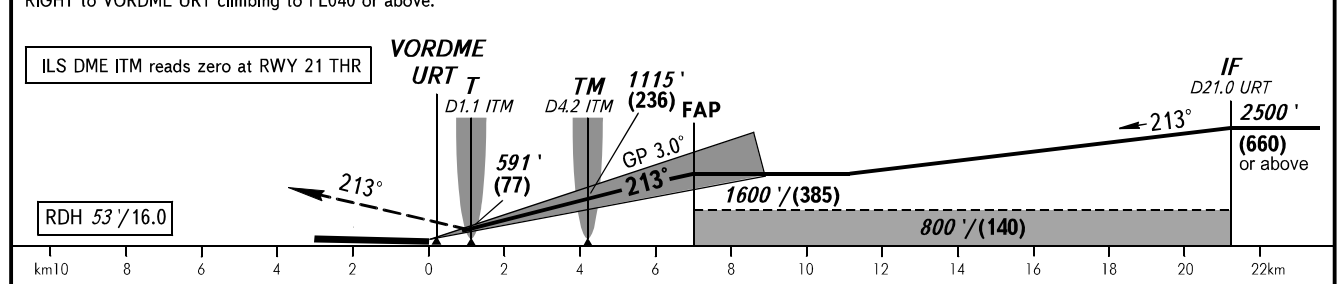
**INSTRUMENT  
APPROACH  
CHART - ICAO**

RADAR **126.100**  
START **118.200**

**TYUMEN, RUSSIA  
ROSHCHINO  
ILS Y CAT I RWY 21**



<b>MISSED APPROACH</b>	DME ITM	2.0	4.0	6.0
Climb on track 213° to 1600'/(385) or above, then turn RIGHT to VORDME URT climbing to FLO40 or above.	ALTITUDE/HEIGHT	739'/(122)	1082'/(226)	1426'/(331)



OCA(H)		A	B	C	D					
Straight-in Approach	CAT I	541' (200') (60)	548' (207') (63)	556' (215') (66)	566' (225') (69)					
		840' (460') (145)	870' (500') (155)	970' (600') (185)	1070' (690') (215)					
Circling										
GROUND SPEED	km/h	150	180	210	240	270	300	330	360	390
	kt	81	97	113	130	146	162	178	194	211
RATE OF DESCENT	m/s	2.2	2.6	3.1	3.5	3.9	4.4	4.8	5.2	5.7
	ft/min	433	512	610	689	768	866	945	1024	1122

**1** TRANSITION LEVEL:  
 - FLO40 when QNH is 1013 hPa (760mm mercury column) or above;  
 - FLO50 when QNH is 977 hPa (733mm mercury column) or above, but less than 1013 hPa (760mm mercury column);  
 - FLO60 when QNH is less than 977 hPa (733mm mercury column).