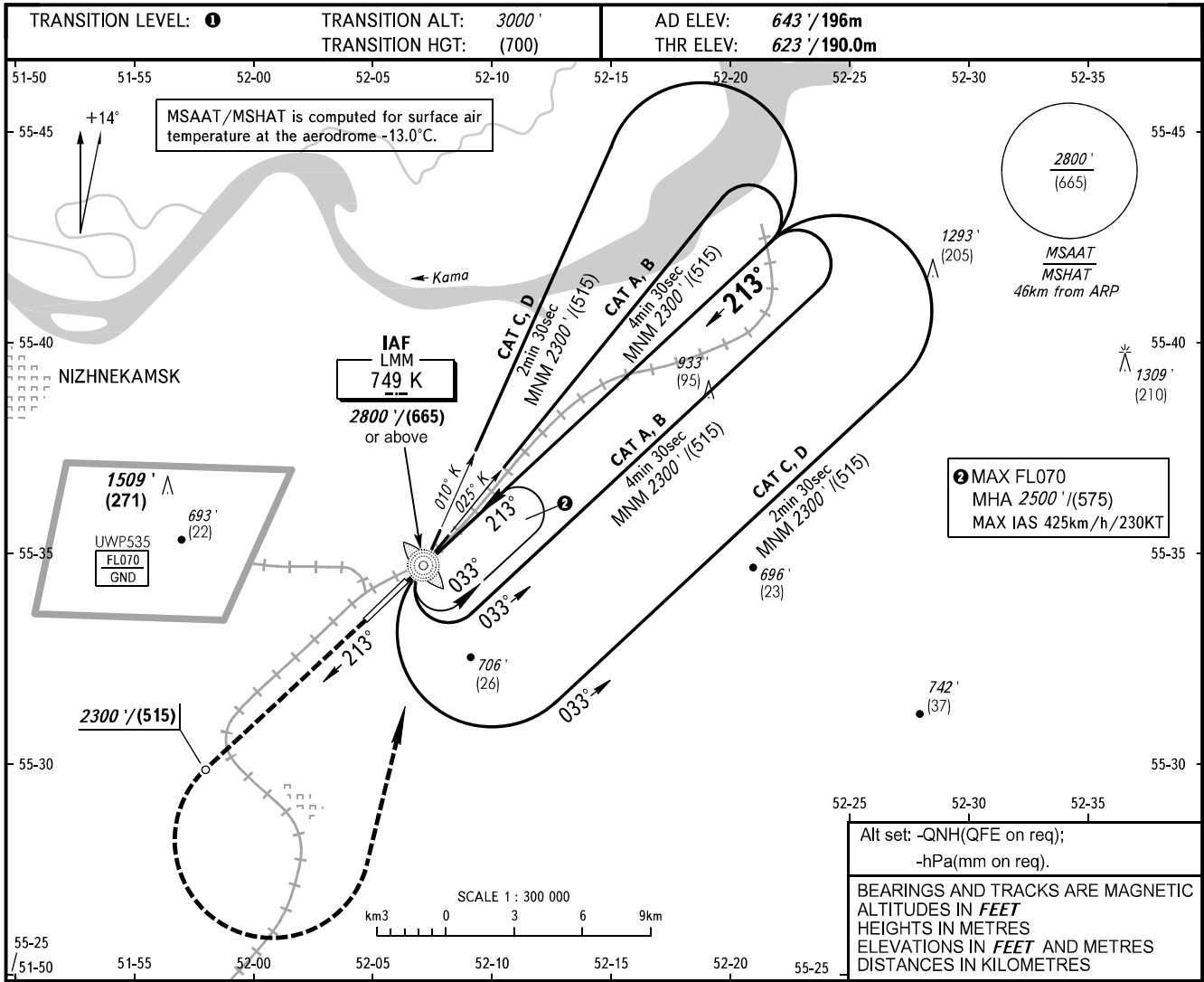


**INSTRUMENT
APPROACH
CHART - ICAO**

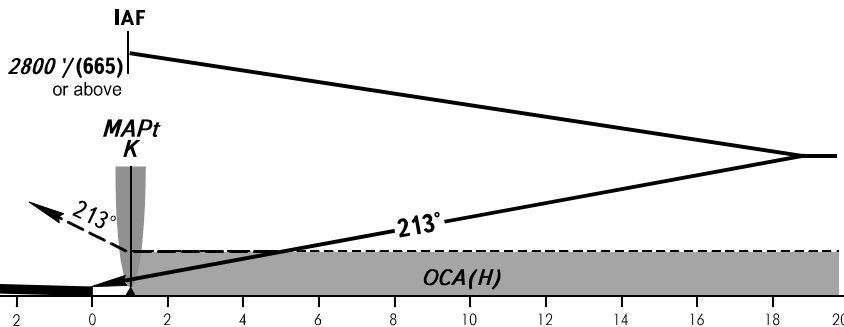
RADAR	127.900
TOWER	127.900
START	121.200

NIZHNEKAMSK, RUSSIA
BEGISHEVO
NDB Y RWY 21



MISSED APPROACH

Climb straight ahead to 2300' / (515), then turn LEFT to IAF LMM K climbing to 2800' / (665) or above, then join holding area or according to chart.



OCA(H)	A	B	C	D
Straight-in Approach	1380' (760') 420 (230)	1380' (760') 420 (230)	1380' (760') 420 (230)	1380' (760') 420 (230)
Circling	1380' (760') 420 (230)	1380' (760') 420 (230)	1380' (760') 420 (230)	1380' (760') 420 (230)

① TRANSITION LEVEL:
- FL040 when QNH is 1013 hPa (760mm mercury column) or above;
- FL050 when QNH is 977 hPa (733mm mercury column) or above, but less than 1013 hPa (760mm mercury column);
- FL060 when QNH is less than 977 hPa (733mm mercury column).

MAPt at LMM K.
Visual manoeuvring in sector 228° - 018° is PROHIBITED.