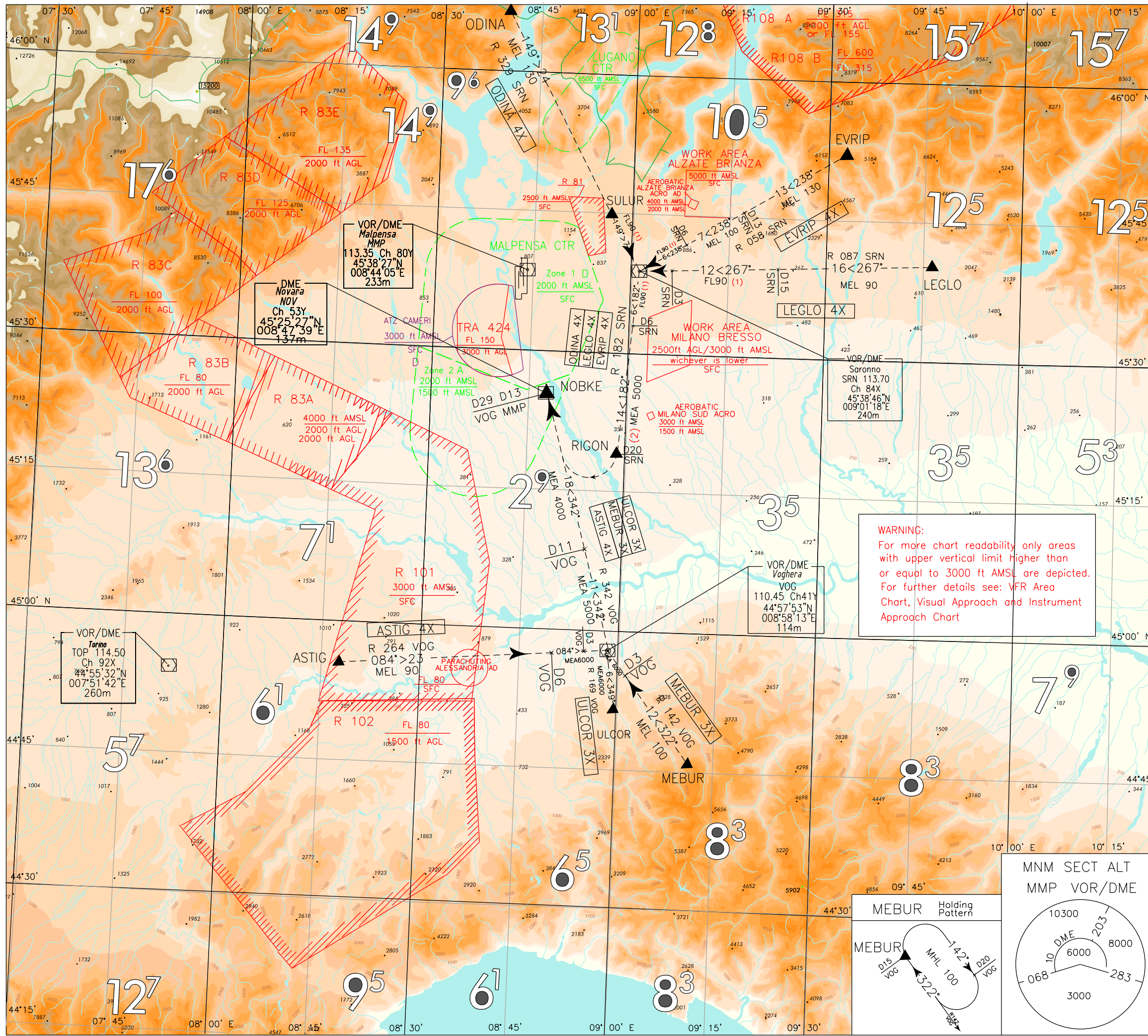


CHANGE: SRN NDB WITHDRAWN, SRN HOLDING MODIFIED, VOG HOLDING REMOVED - EVRIP 4X, LEGLO 4X AND ODINA 4X UPDATED.



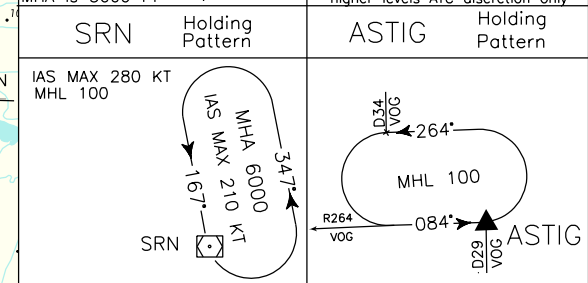
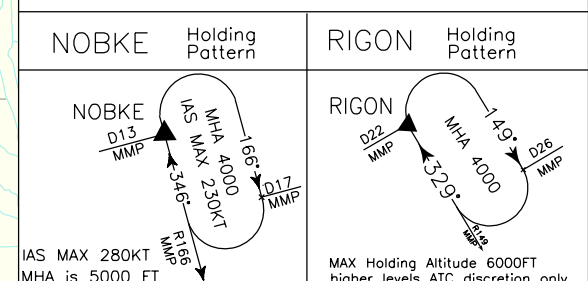
MILANO/MALPENSA  
 STAR  
 RWY 35 L/R  
 Able to be planned only for aircraft  
 NOT RNAV equipped

TRANSITION ALT 6000

REMARKS:  
 (1) MEA 6000FT ATC Discretion  
 (2) MEA 4000FT ATC Discretion

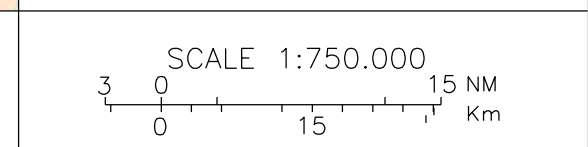
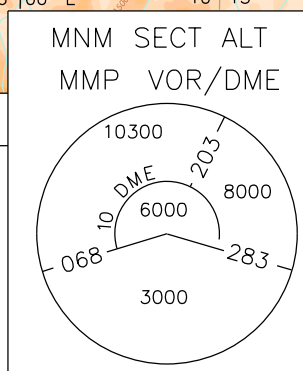
FREQUENCIES

|      |                              |                               |
|------|------------------------------|-------------------------------|
| APP  | Milano Radar                 | 126.750 (N)<br>CH 125.630 (S) |
| TWR  | Malpensa TWR (17R/35L)       | 128.350                       |
| TWR  | Malpensa TWR (17L/35R)       | 123.600                       |
| ATIS | Malpensa Arrival Information | 120.025                       |



**WARNING:**  
 For more chart readability only areas with upper vertical limit higher than or equal to 3000 ft AMSL are depicted.  
 For further details see: VFR Area Chart, Visual Approach and Instrument Approach Chart

LEGEND



ELEV. ALT IN FEET  
 DIST IN NM  
 BRG ARE MAG  
 VAR 3°E (2020)