

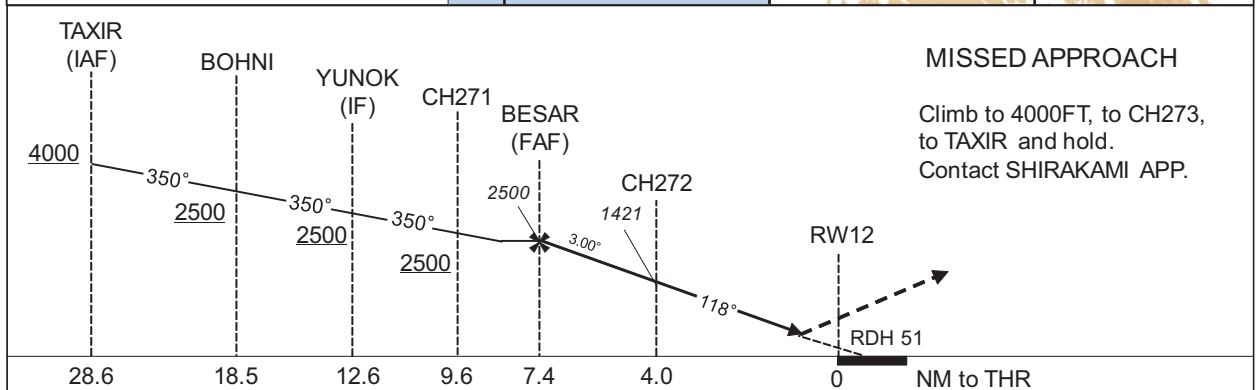
INSTRUMENT APPROACH CHART

RJCH / HAKODATE

RNP Y RWY12(AR)

SHIRAKAMI APP 120.85 - 120.65	RNP AR RF required.	HAKODATE TWR 118.35 - 126.2	RADAR AVBL ATIS 126.6
----------------------------------	------------------------	--------------------------------	--------------------------

For uncompensated Baro-VNAV systems, procedure not authorized below -20°C / above 45°C



Missed APCH climb gradient MNM 5.0%

MINIMA	THR elev. 92	AD elev. 112
CAT	RNP 0.30	
	DA(H)	RVR/CMV
A	-	-
B	-	-
C	402(310)	1400
D	423(331)	1600

MINIMA with Missed APCH climb gradient of 2.5% are not established.

Authorization Required

CHANGE : SHIRAKAMI APP established. HAKODATE APP abolished. Description of VAR. Missed APCH PROC.

INSTRUMENT APPROACH CHART

RJCH / HAKODATE

RNP Y RWY12(AR)

Coding Table

Serial Number	Path Descriptor	Waypoint Identifier	Fly Over	Course °M(°T)	Magnetic Variation	Distance (NM)	Turn Direction	Altitude (FT)	Speed (KIAS)	VPA/RDH (°/FT)	RNP Value
001	IF	TAXIR	-	-	-9.6	-	-	+4000	-	-	-
002	TF	BOHNI	-	350 (340.6)	-9.6	10.1	-	+2500	-	-	1.0
003	TF	YUNOK	-	350 (340.6)	-9.6	5.9	-	+2500	-	-	1.0
004	TF	CH271	-	350 (340.5)	-9.6	3.0	-	+2500	-185	-	1.0
005	RF Center: CHRF5 r=2.50NM	BESAR	-	-	-9.6	2.2	R	2500	-	-	1.0
006	RF Center: CHRF5 r=2.50NM	CH272	-	-	-9.6	3.4	R	1421	-	-3.00	0.3
007	TF	RW12	Y	118 (108.0)	-9.6	4.0	-	143	-	-3.00/51	0.3
008	TF	CH273	-	118 (108.1)	-9.6	5.4	-	-	-	-	1.0
009	TF	TAXIR	-	207 (197.6)	-9.6	19.1	-	4000	-	-	1.0

Path	Waypoint Identifier	Inbound Course °M(°T)	Magnetic Variation	Outbound Time (MIN)	Turn Direction	Minimum Altitude (FT)	Maximum Altitude (FT)	Speed (KIAS)	RNP Value
Hold	TAXIR	015 (005.3)	-9.6	1.0 (-14000)	L	4000	FL140	-220 (-14000)	1.0

Waypoint Coordinates

Waypoint Identifier	Coordinates	RF Arc Center Identifier	Coordinates
TAXIR	412632.43N / 1404728.04E	CHRF5	414519.29N / 1404209.46E
BOHNI	413606.23N / 1404258.19E		
YUNOK	414139.34N / 1404020.87E		
CH271	414429.13N / 1403900.50E		
BESAR	414635.08N / 1403916.36E		
CH272	414742.10N / 1404311.31E		
RW12	414627.62N / 1404817.61E		
CH273	414446.88N / 1405510.13E		

CHANGE : VAR. PROC renamed. PROC course. RNAV HLDG established (TAXIR).