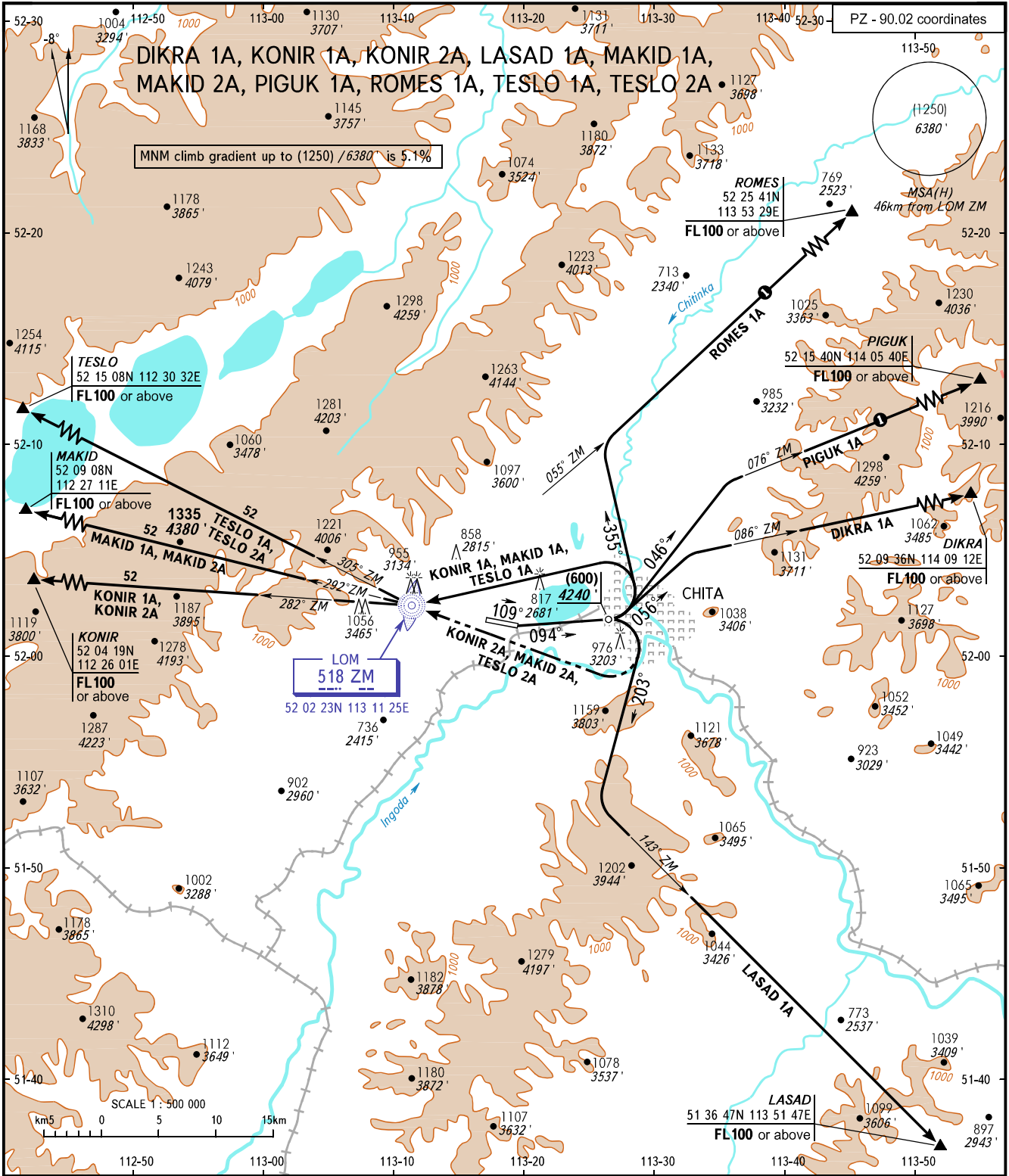


STANDARD DEPARTURE CHART  
INSTRUMENT (SID) - ICAO

TRANSITION HGT: (1800)  
TRANSITION ALT: 8180'

CHITA, RUSSIA  
KADALA  
RWY 11



|          |         |                                       |
|----------|---------|---------------------------------------|
| TOWER    | 118.200 | ① Only for Russian users of airspace. |
| APPROACH | 122.000 |                                       |

BEARINGS AND TRACKS ARE MAGNETIC  
ALTITUDES, HEIGHTS AND ELEVATIONS IN  
METRES AND FEET  
DISTANCES IN KILOMETRES

Alt set: -QFE(QNH on req);  
-mm(hPa on req).