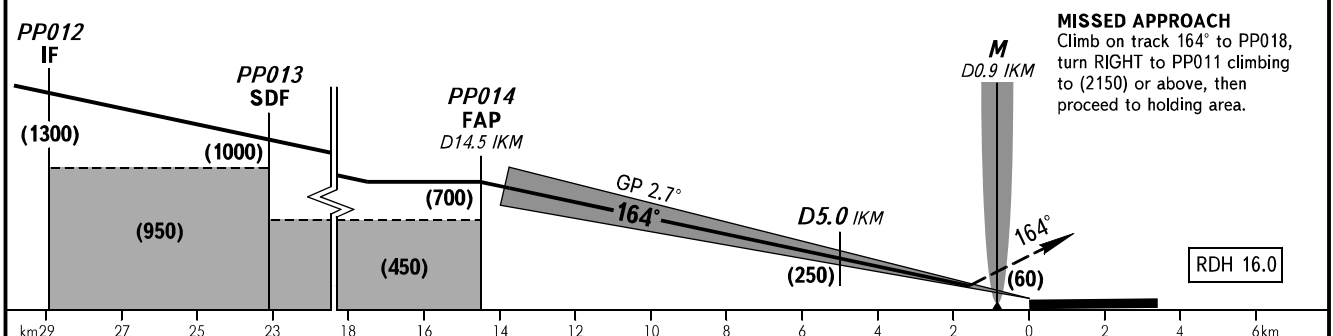
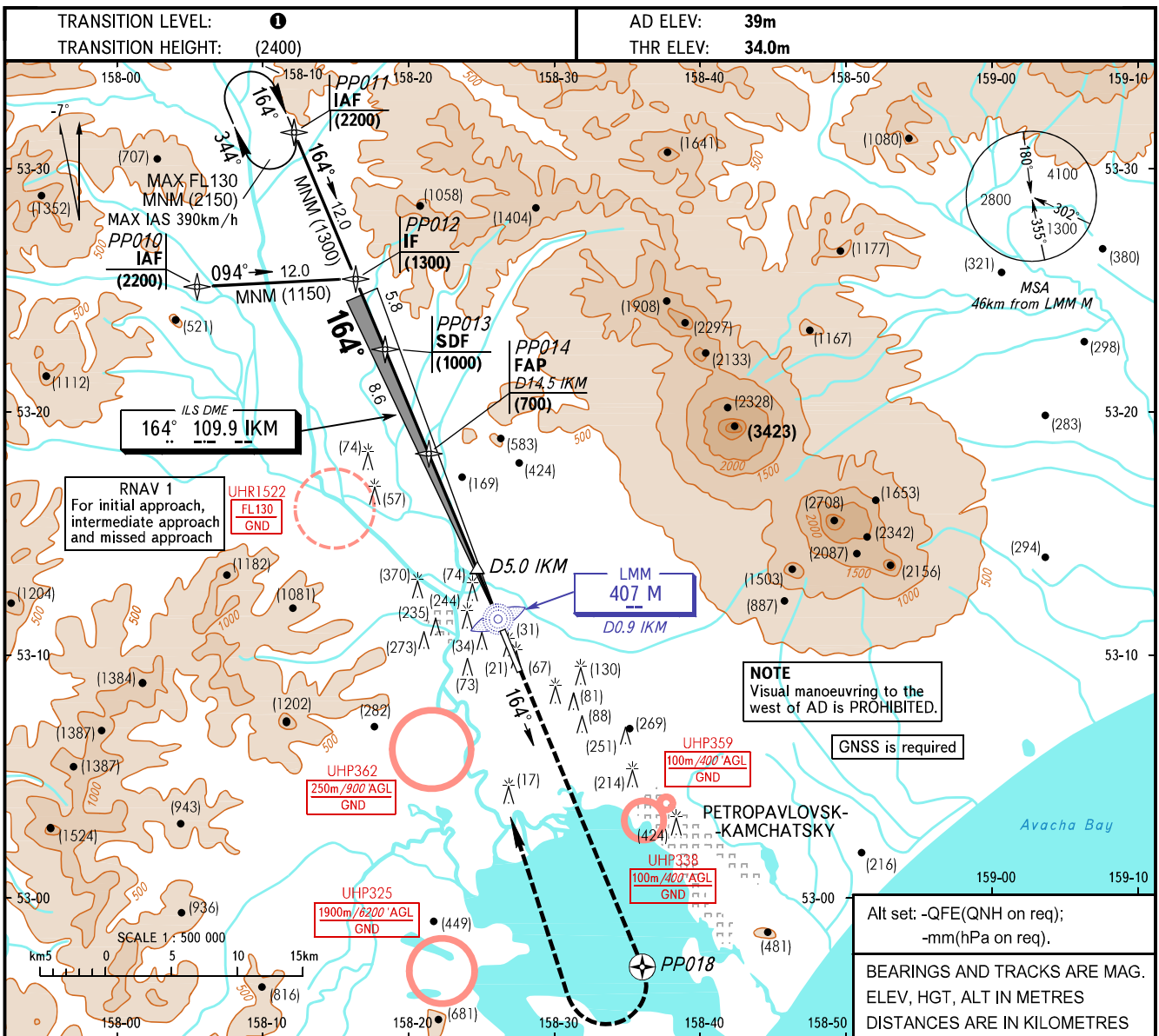


**INSTRUMENT
APPROACH
CHART - ICAO**

START **118.100**
RADAR **119.400**

**PETROPAVLOVSK-KAMCHATSKY, RUSSIA
YELIZOVO
ILS Z CAT I RWY 16R**



	OCA(H)				TRANSITION LEVEL:					
	A	B	C	D	- FL090 when QFE is 756mm mercury column or above; - FL100 when QFE is 729mm mercury column or above, but less than 756mm mercury column; - FL110 when QFE is less than 729mm mercury column.					
Straight-in Approach	92(59)	95(62)	98(65)	101(68)						
Circling	295(260)	345(310)	480(445)	555(520)						
GROUND SPEED	km/h	150	180	210	240	270	300	330	360	390
RATE OF DESCENT	m/s	2.0	2.4	2.7	3.1	3.5	3.9	4.3	4.7	5.1

CHANGE: UHP359, UHP362