

STANDARD DEPARTURE
CHART - INSTRUMENT
RNAV (GPS)

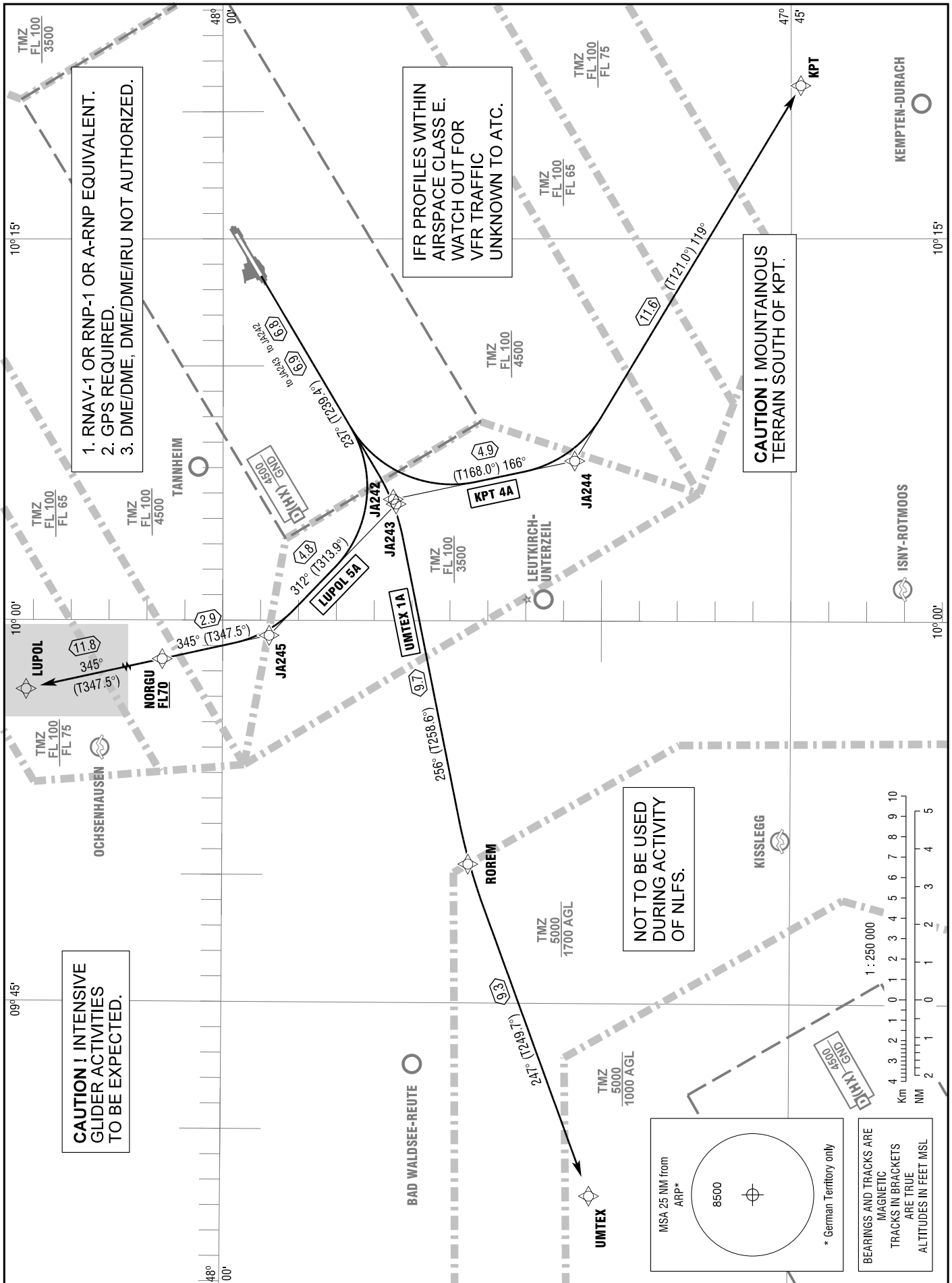
TRANSITION
ALTITUDE 5000
VAR 2° E

| | |
|------------------|---------|
| MEMMINGEN ATIS | 118.855 |
| MEMMINGEN GROUND | 121.680 |
| MEMMINGEN TOWER | 126.855 |
| MUENCHEN RADAR | 129.450 |

MEMMINGEN

RWY 24

KPT 4A LUPOL 5A UMTEX 1A



Correction: Communications.