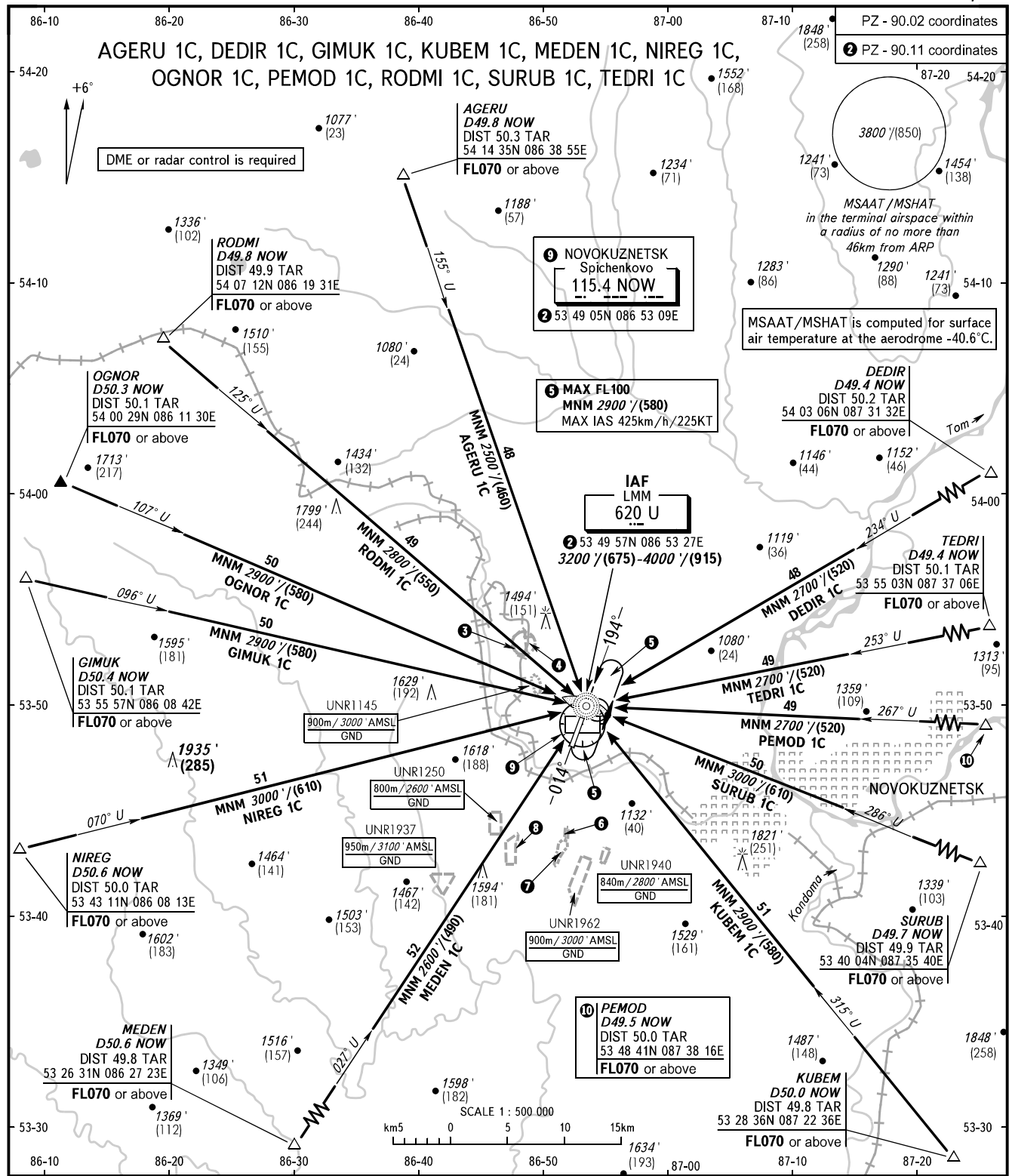


STANDARD ARRIVAL CHART
INSTRUMENT (STAR) - ICAO

NOVOKUZNETSK, RUSSIA
SPICHENKOVO
RWY 01/19

TRANSITION
LEVEL: **1**



APPROACH START	118.600	121.200	3 UNR1249 750m/2500' AMSL GND	4 UNR1277 670m/2200' AMSL GND	6 UNR1987 900m/3000' AMSL GND
			7 UNR1939 900m/3000' AMSL GND	8 UNR1986 850m/2800' AMSL GND	

- 1** TRANSITION LEVEL:
- FL050 when QNH is 1013 hPa (760mm mercury column) or above;
- FL060 when QNH is 977 hPa (733mm mercury column) or above, but less than 1013 hPa (760mm mercury column);
- FL070 when QNH is less than 977 hPa (733mm mercury column).

BEARINGS AND TRACKS ARE MAGNETIC
ALTITUDES IN FEET, HEIGHTS IN METRES
ELEVATIONS IN FEET AND METRES
DISTANCES IN KILOMETRES

Alt set: -QNH(QFE on req);
-hPa(mm on req).

NOTE
HGT is given relative to RWY 19 THR (THR ELEV 1000'/(305m).

CHANGE: HLDG; OBST