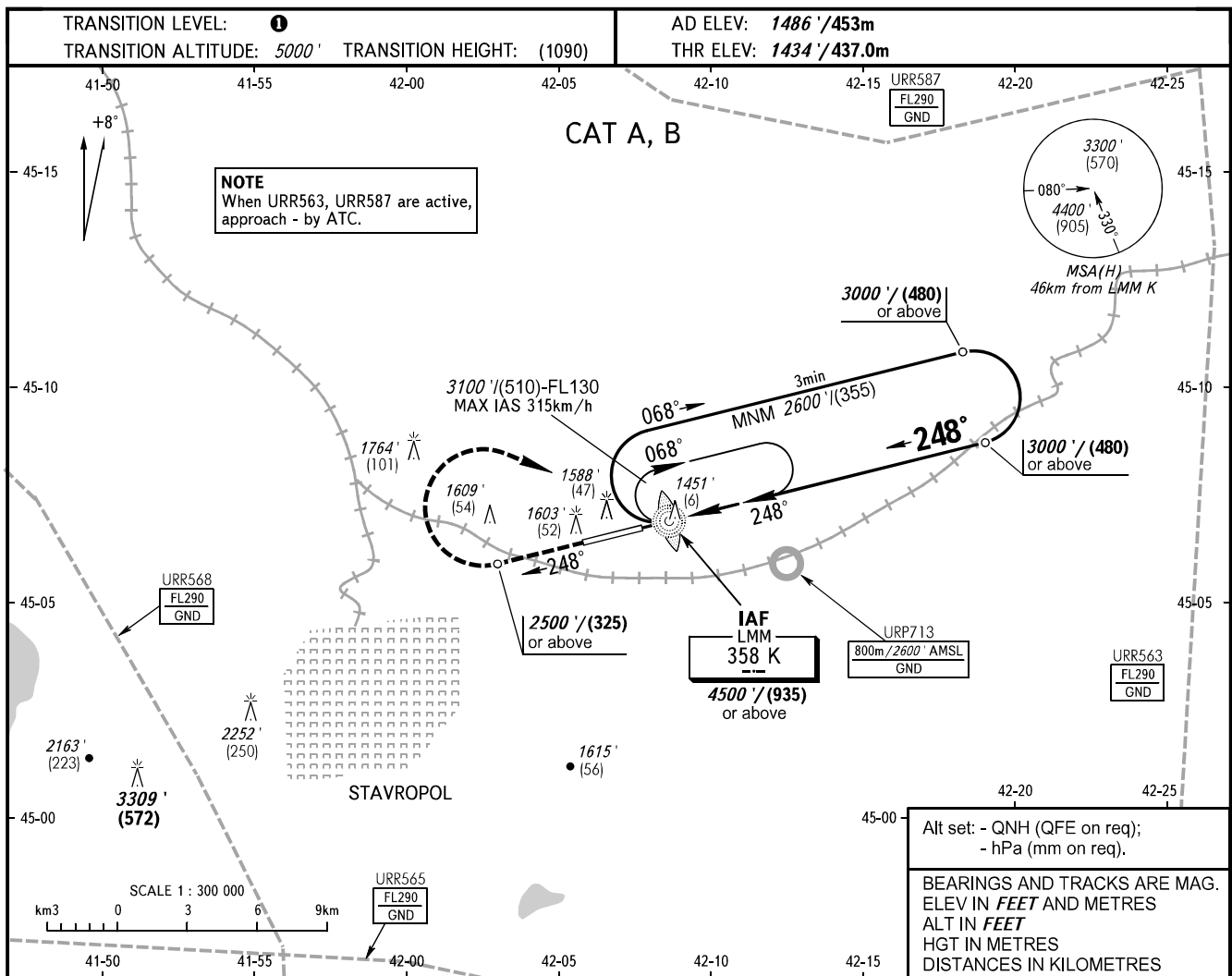


INSTRUMENT
APPROACH
CHART - ICAO

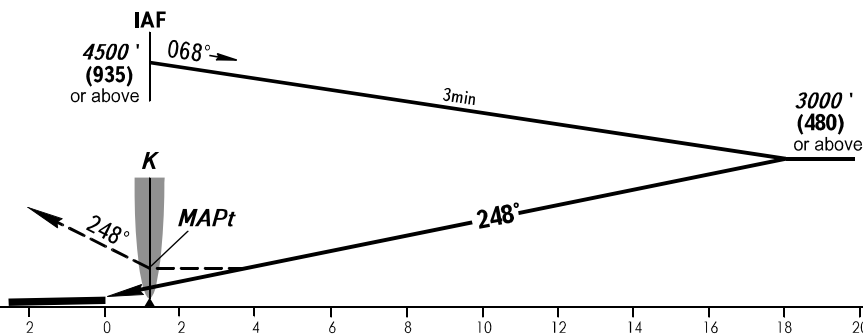
TOWER 120.900

STAVROPOL, RUSSIA
SHPAKOVSKOYE
NDB U RWY 25



MISSED APPROACH

Climb on track 248° to 2500' / (325)
or above, then turn RIGHT to LMM K
at 4500' / (935) or above, then
according to chart.



OCA(H)		A	B	C	D
Straight-in Approach		1750' (315') (100)	1750' (315') (100)		
Circling		1940' (450') (140)	1980' (500') (155)		

① TRANSITION LEVEL:

- FL060 when QNH is 1013 hPa (760mm mercury column) or above;
- FL070 when QNH is 977 hPa (733mm mercury column) or above, but less than 1013 hPa (760mm mercury column);
- FL080 when QNH is less than 977 hPa (733mm mercury column).

CHANGE: Limiting bearing line withdrawn, URP713