

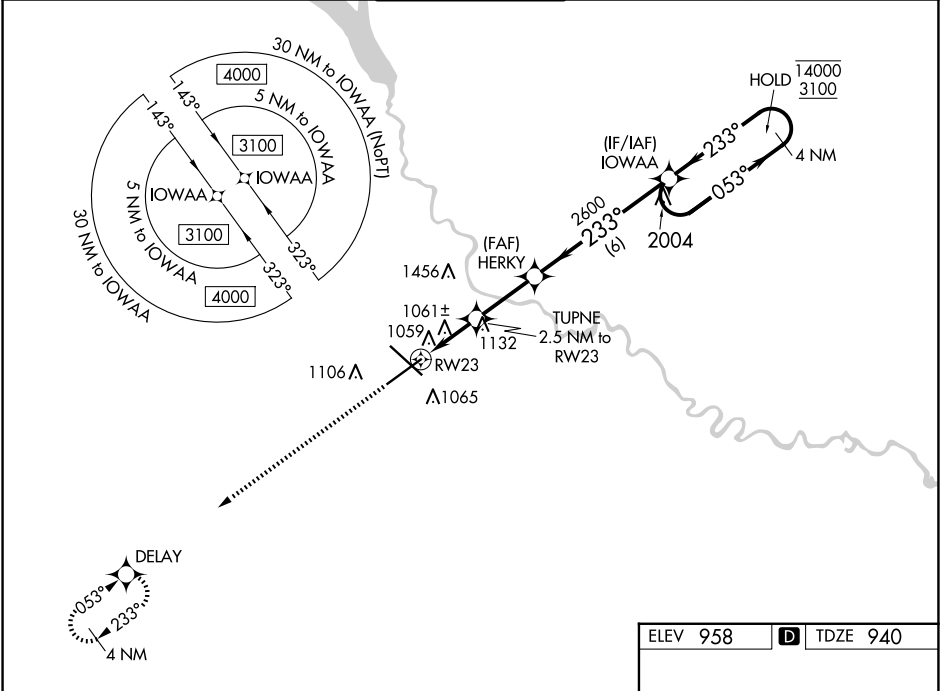
WAAS CH 97541 W23A	APP CRS 233°	Rwy Idg TDZE Apt Elev	9004 940 958
----------------------------------------	------------------------	-----------------------------	-----------------------------------------

RNAV (GPS) RWY 23

DES MOINES INTL (DSM)

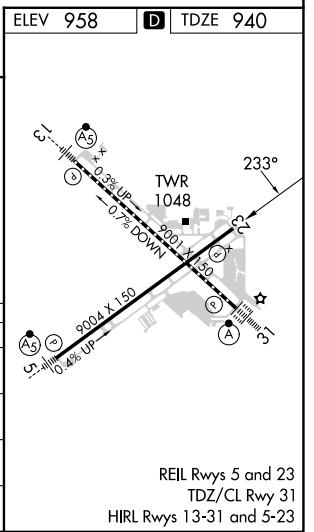
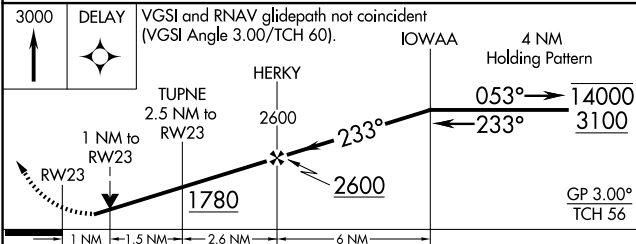
RNP APCH - GPS.		MISSED APPROACH: Climb to 3000 direct DELAY and hold.	
<p>▼ Rwy 23 helicopter visibility reduction below 3/4 SM NA. For uncompensated Baro-VNAV systems, LNAV/VNAV NA below -20°C or above 54°C.</p>			

ATIS 119.55	DES MOINES APP CON 123.9 307.15	DES MOINES TOWER 118.3 257.8	GND CON 121.9 348.6	CLNC DEL 134.15 317.55
-----------------------	-------------------------------------------	----------------------------------------	-------------------------------	----------------------------------



NC-3, 20 MAR 2025 to 17 APR 2025

NC-3, 20 MAR 2025 to 17 APR 2025



CATEGORY	A	B	C	D
LPV DA		1263-1	323 (400-1)	
LNAV/VNAV DA		1220-7/8	280 (300-7/8)	
LNAV MDA		1320-1	380 (400-1)	
C CIRCLING	1420-1	462 (500-1)	1600-1 3/4 642 (700-1 3/4)	1760-2 1/2 802 (900-2 1/2)