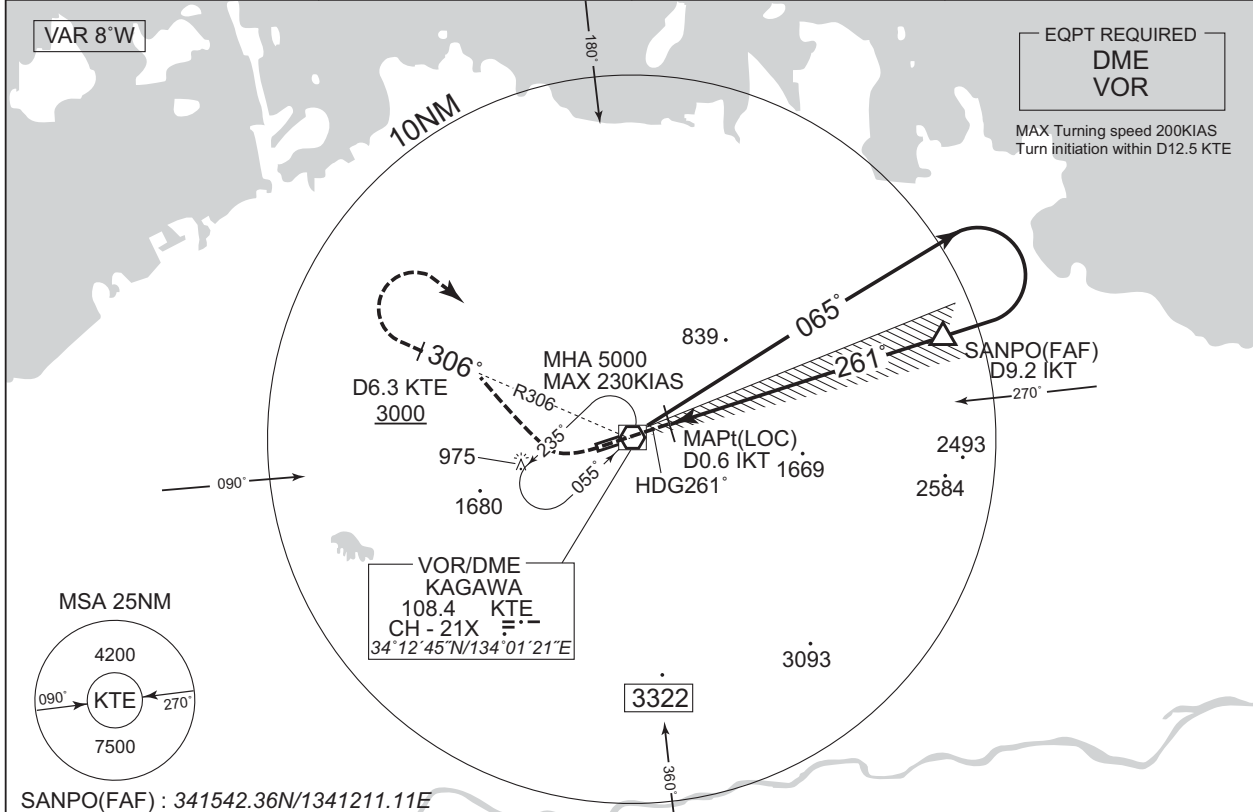


INSTRUMENT APPROACH CHART

RJOT / TAKAMATSU

ILS Y or LOC Y RWY26

KANSAI APP 121.2 – 120.4 – 261.2	ILS LOC 109.7 IKT ILS-GP 333.2 ILS-DME CH-34	TAKAMATSU TOWER 118.3 – 126.2	RADAR AVBL ATIS 127.45
-------------------------------------	---	----------------------------------	---------------------------

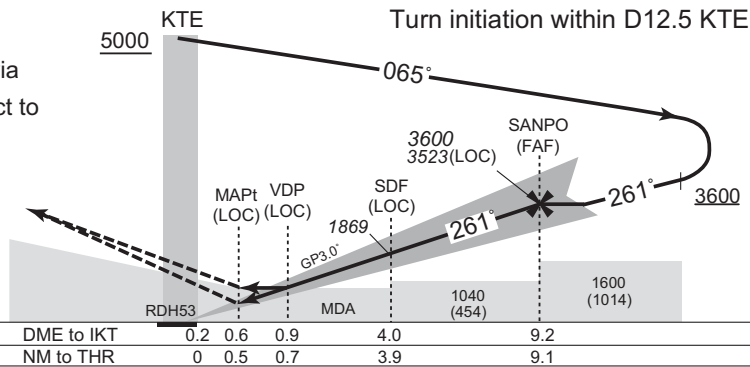


NM to IKT	MAPt	2	3	4	5	6	7	8	9	FAF
ALT (3.0° APCH Path)	-	1224	1543	1861	2180	2498	2817	3135	3453	3523

MISSED APPROACH

Climb to 1000FT on HDG261°, turn right, via KTE R306 to KTE 6.3DME, turn right, direct to KTE VOR/DME and hold at 5000FT.
Cross KTE 6.3DME at or above 3000FT.
Contact KANSAI APP.

Timing not authorized for defining the MAPt.



Missed APCH climb gradient MNM 5.0%

MINIMA		THR elev. 586		AD elev. 607		
CAT	CAT I		LOC		CIRCLING	
	DA(H)	RVR/CMV	MDA(H)	RVR/CMV	MDA(H)	VIS
A	786 (200)	550	920 (334)	900	1140 (533)	1600
B				1000		
C				1310 (703)	2400	
D				1400	1350 (743)	3200

Circling to NORTH side of RWY only.
MINIMA with Missed APCH climb gradient of 2.5% are not established.

CHANGE : Description of VAR.