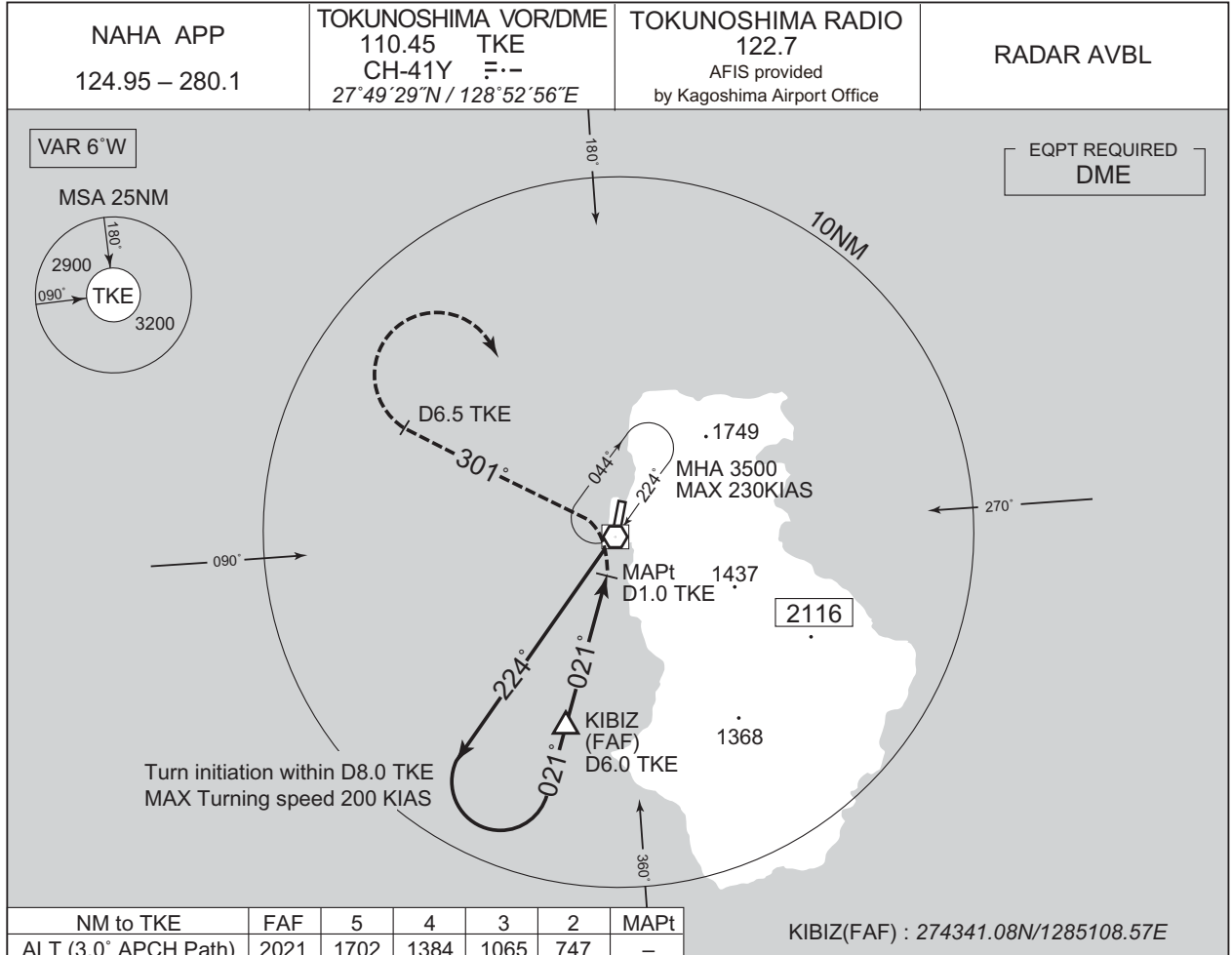


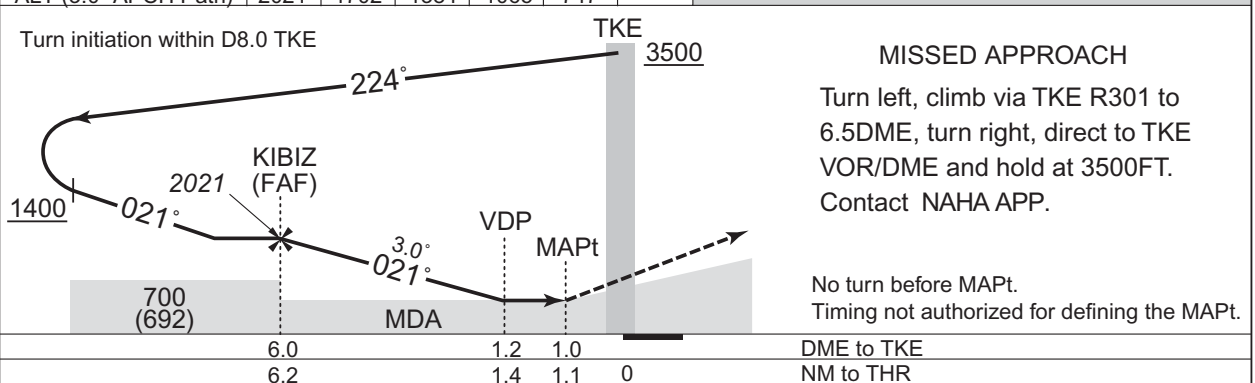
INSTRUMENT APPROACH CHART

RJKN / TOKUNOSHIMA

VOR RWY01



CHANGE : Description of RADAR Service. Missed APCH PROC.



Missed APCH climb gradient MNM 4.0%

MINIMA		THR elev. 17	AD elev. 8	
CAT	MDA(H)		CIRCLING	
	MDA(H)	CMV	MDA(H)	VIS
A	490 (482)	1500	730 (722)	1600
B			990 (982)	
C			1190 (1182)	2400
D	2000	1480 (1472)	3200	

MINIMA with Missed APCH climb gradient of 2.5% are not established.
Circling to WEST side of RWY only.