

NEW ORLEANS, LOUISIANA

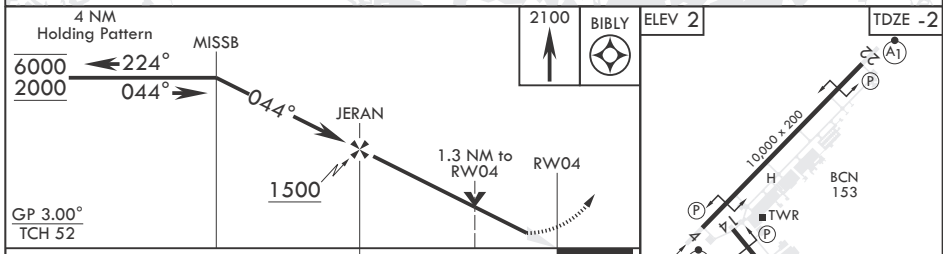
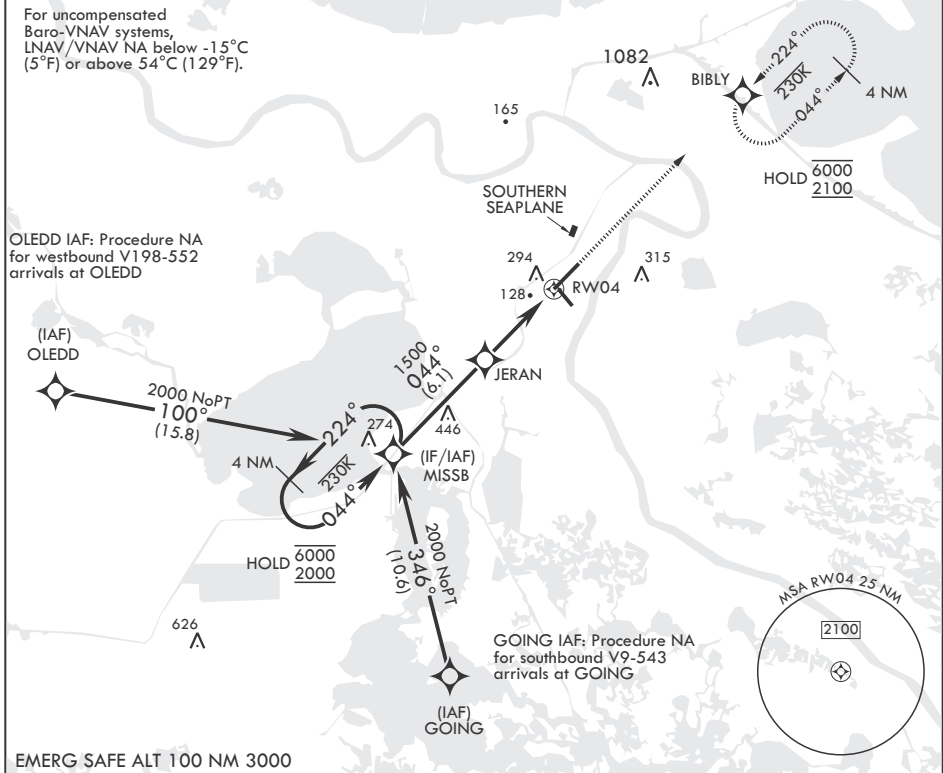
RNAV (GPS) RWY 4

- (USN)
NEW ORLEANS NAS JRB (ALVIN CALLENDER FLD) (KNBG)

APCH CRS 044°	Rwy Idg TDZE Arprt Elev	10,000 -2 2
-------------------------	-------------------------------	--

RNP APCH-GPS	ALSF-1	MISSED APPROACH: Climb to 2100 direct BIBLY and hold.
* When ALS inop, increase vis to 1 1/8 miles. ** When ALS inop, increase CAT AB vis to 1 mile; CAT CD vis to 1 3/8 miles.		

ATIS* 279.55	APP CON/DEP CON 123.85 256.9	NAVY NEW ORLEANS TOWER* 123.8 0* 340.2 (CTAF)	GND CON 121.6 270.35	CLNC DEL 128.35 263.0	ASR/PAR
------------------------	--	---	--------------------------------	---------------------------------	---------



CATEGORY	A	B	C	D
LNAV/VNAV DA*	410-3/4		412	(500-3/4)
LNAV MDA**	460-1/2	462 (500-1/2)	460-1	462 (500-1)
☑ CIRCLING	640-1	638 (700-1)	640-1 3/4 638 (700-1 3/4)	660-2 658 (700-2)

HIRL Rwy 14-32
HIRL Rwy 4-22
REIL all Rwy's

NEW ORLEANS, LOUISIANA 29°50'N - 90°02'W NEW ORLEANS NAS JRB (ALVIN CALLENDER FLD) (KNBG)

Amdt 6 20MAR25

RNAV (GPS) RWY 4

SC-4, 20 MAR 2025 to 17 APR 2025

SC-4, 20 MAR 2025 to 17 APR 2025