

STANDARD ARRIVAL CHART - INSTRUMENT

VAR9° W

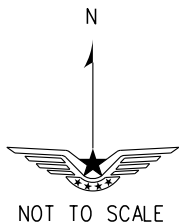
D-ATIS 126.25
TWR 118.85(124.35)

ZYCC CHANGCHUN/Longjiao
RNAV RWY24(DUKIR/BUTET)

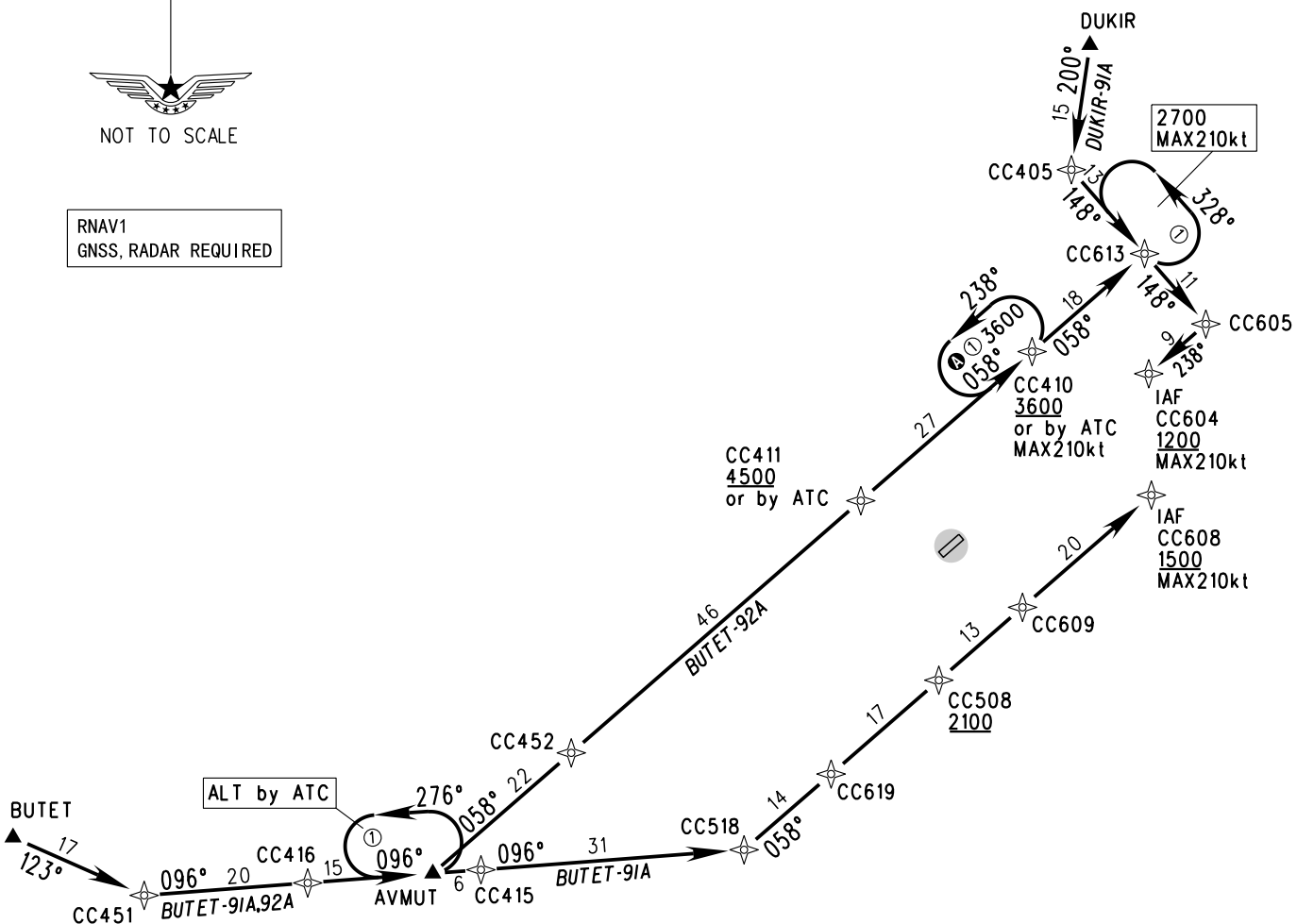
BEARINGS ARE MAGNETIC.
ALTITUDES, ELEVATIONS
AND HEIGHTS IN METERS.
DME DISTANCES IN
NAUTICAL MILES.
DISTANCES IN KM.

APP01 119.45(127.9)
APP02 125.25(127.9)
APP03 120.2(127.9)

TL 3600
TA 3000
3300(QNH ≥ 1031hPa)
2700(QNH ≤ 979hPa)



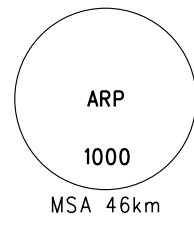
RNAV1
GNSS, RADAR REQUIRED



Note:

1. When aircraft ALT is 3000m(QNH) or below, MAX IAS is 250kt;
2. Holding at CC410 shall be used by ATC.

STAR	ROUTING
DUKIR-91A	DUKIR-CC405-CC613-CC605-CC604
BUTET-91A	BUTET-CC451-CC416-AVMUT-CC415-CC518-CC619-CC508-CC609-CC608
BUTET-92A	BUTET-CC451-CC416-AVMUT-CC452-CC411-CC410-CC613-CC605-CC604



Changes: Nil.