

FALLON, NEVADA

# RNAV (GPS) RWY 13R

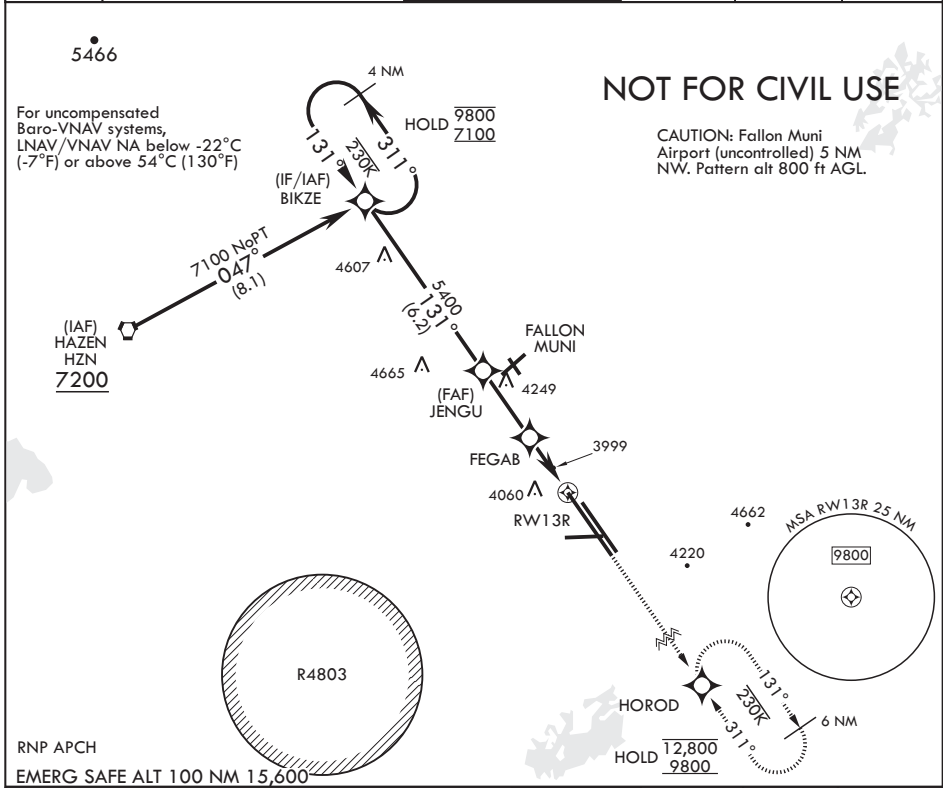
APCH CRS <b>131°</b>	Rwy Idg TDZE Arprt Elev	<b>14,001</b> <b>3935</b> <b>3935</b>
-------------------------	-------------------------------	---

AL-143 (USN)

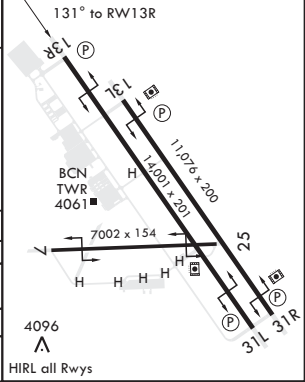
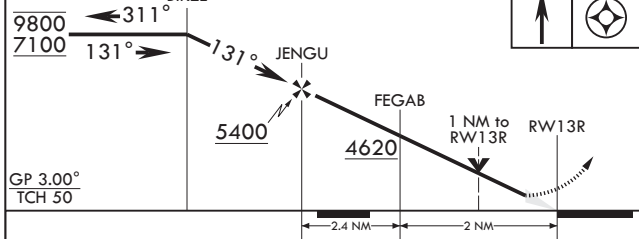
FALLON NAS (VAN VOORHIS FLD) (KNFL)

**▽** MISSED APPROACH: Climb to 9800 direct HOROD and hold, continue climb-in-hold to 9800.

ATIS★ <b>370.925</b>	NAVY FALLON APP CON/DEP CON <b>120.85 360.2</b>	NAVY FALLON TOWER★ <b>119.25 340.2</b>	GND CON <b>251.15</b>	CLNC DEL <b>353.55</b>	ASR/PAR
-------------------------	--	---	--------------------------	---------------------------	---------



<b>9800</b>	HOROD	ELEV <b>3935</b>	TDZE <b>3935</b>
-------------	-------	------------------	------------------



CATEGORY	A	B	C	D
LNAV/VNAV DA	4185-¾	250	(300-¾)	4194-¾ 259 (300-¾)
LNAV MDA	4320-1	385 (400-1)	4320-1⅞	385 (400-1⅞)
<b>C</b> CIRCLING	4400-1	465 (500-1)	4700-2¼ 765 (800-2¼)	4920-3 985 (1000-3)

FALLON, NEVADA

39°25'N - 118°42'W

FALLON NAS (VAN VOORHIS FLD) (KNFL)

Amdt 4 24MAR22

# RNAV (GPS) RWY 13R

SW-4, 20 MAR 2025 to 17 APR 2025

SW-4, 20 MAR 2025 to 17 APR 2025