

WAAS CH <b>63140</b> <b>W27A</b>	APP CRS <b>276°</b>	Rwy Idg TDZE Apt Elev	<b>4057</b> <b>1518</b> <b>1519</b>
----------------------------------------	------------------------	-----------------------------	-------------------------------------------

# RNAV (GPS) RWY 27

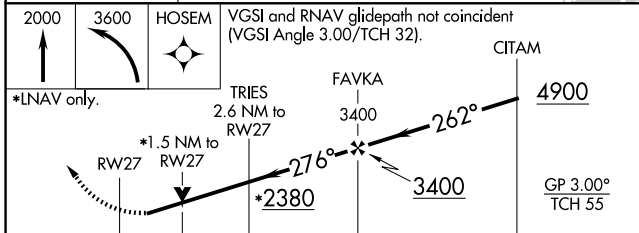
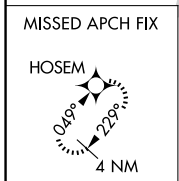
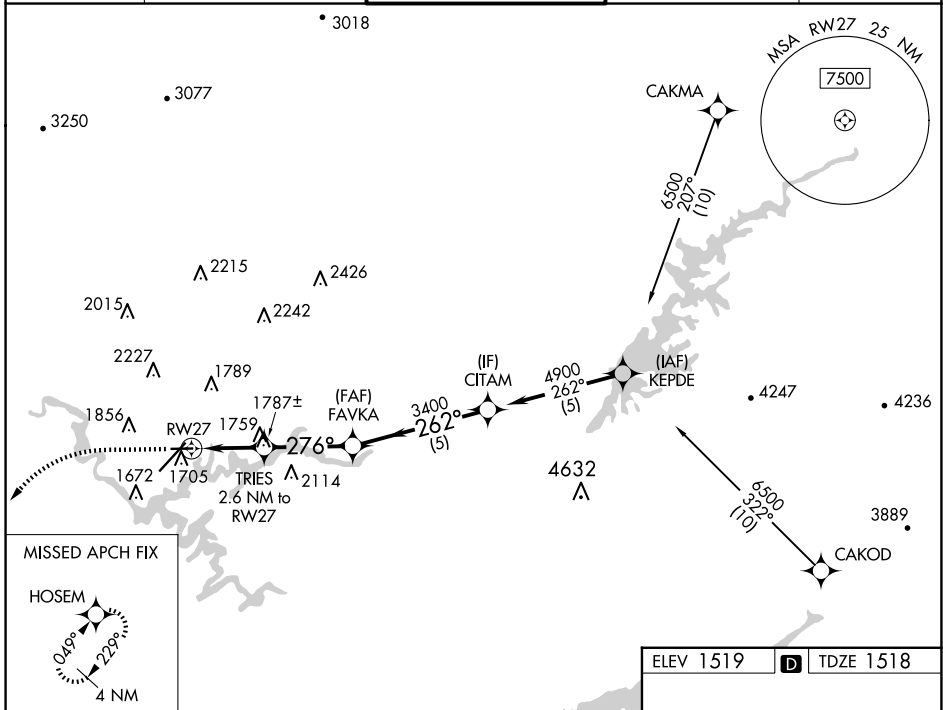
TRI-CITIES (TRI)

RNP APCH.

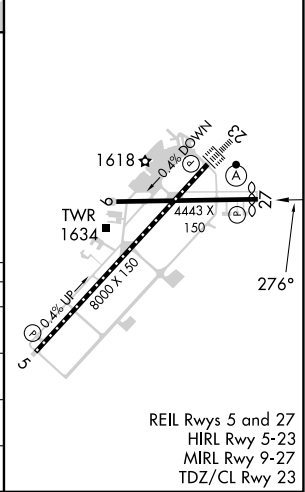
**⚠** Circling to Rwy 9 NA at night. Circling NA northwest of Rws 9 and 23.  
**⚠** Rwy 27 helicopter visibility reduction below 3/4 SM NA. For uncompensated Baro-VNAV systems, LNAV/VNAV NA below -1.4°C or above 54°C.

**MISSED APPROACH:** Climb to 2000 then climbing left turn to 3600 direct HOSEM and hold.

ATIS <b>118.25</b>	TRI-CITY APP CON ★ <b>134.425 349.0</b>	TRI-CITY TOWER ★ <b>119.5 (CTAF) 257.8</b>	GND CON <b>121.7 348.6</b>	UNICOM <b>122.95</b>
-----------------------	--------------------------------------------	-----------------------------------------------	-------------------------------	-------------------------



ELEV 1519	<b>D</b>	TDZE 1518
-----------	----------	-----------



CATEGORY	A	B	C	D
LPV DA	1788-7/8 270 (300-7/8)			
LNAV/VNAV DA	2034-13/4 516 (600-13/4)			
LNAV MDA	2020-1	502 (600-1)	2020-13/8	502 (600-13/8)
<b>C</b> CIRCLING	2120-1 601 (700-1)	2180-1 661 (700-1)	2320-2 1/4 801 (900-2 1/4)	2500-3 981 (1000-3)

SE-1, 20 MAR 2025 to 17 APR 2025

SE-1, 20 MAR 2025 to 17 APR 2025