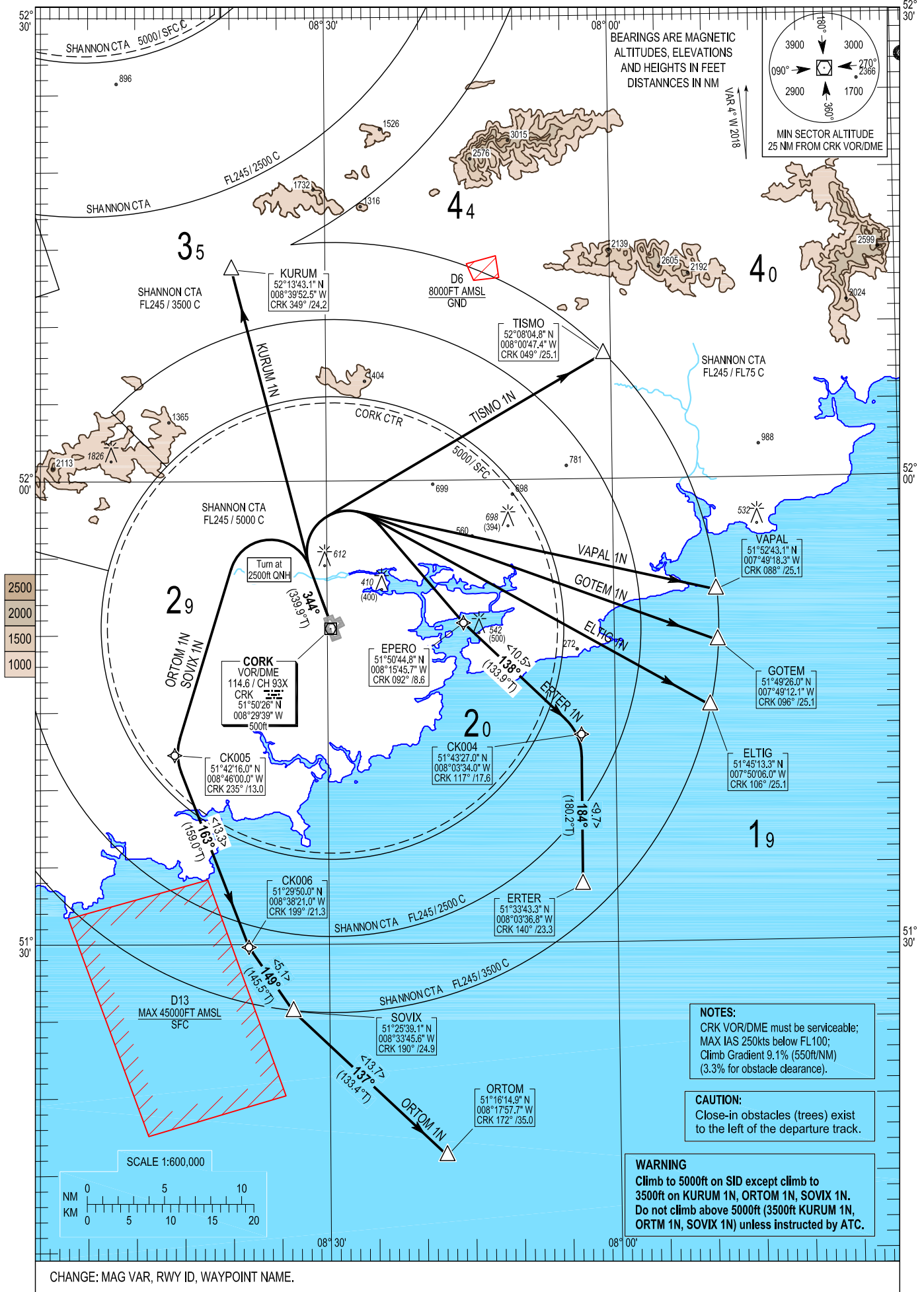


TWR	119.300
GND	121.850
ATIS	120.925
CRK APP	119.900

**CORK RWY 34
CAT C, D**

TISMO 1N, VAPAL 1N, GOTEM 1N, ERTER 1N,
ELTIG 1N, ORTOM 1N, SOVIX 1N, KURUM 1N.



NOTES:
 CRK VOR/DME must be serviceable;
 MAX IAS 250kts below FL100;
 Climb Gradient 9.1% (550ft/NM)
 (3.3% for obstacle clearance).

CAUTION:
 Close-in obstacles (trees) exist
 to the left of the departure track.

WARNING
 Climb to 5000ft on SID except climb to
 3500ft on KURUM 1N, ORTOM 1N, SOVIX 1N.
 Do not climb above 5000ft (3500ft KURUM 1N,
 ORTM 1N, SOVIX 1N) unless instructed by ATC.

CHANGE: MAG VAR, RWY ID, WAYPOINT NAME.

26 APR 2018

ELTIG1N CAT C/D SID RWY34**ELTIIN**

Navigation Performance	Path Terminator	WPT Name	Latitude (N) / Longitude (W)	Fly-By or Fly-Over	Distance (NM)	True Track / Magnetic Track	Upper Limit/ Lower Limit	Speed Limit (kts)	Remarks
RNAV 1	CA	RWY34	-	-	-	339.9 / 344	- / 2500	-	-
RNAV 1	DF	ELTIG	514513.3 / 0075006.0	Fly-By	-	-	-	-	R

ERTER1N CAT C/D SID RWY34**ERTEIN**

Navigation Performance	Path Terminator	WPT Name	Latitude (N) / Longitude (W)	Fly-By or Fly-Over	Distance (NM)	True Track / Magnetic Track	Upper Limit/ Lower Limit	Speed Limit (kts)	Remarks
RNAV 1	CA	RWY34	-	-	-	339.9 / 344	- / 2500	-	-
RNAV 1	DF	EPERO	515044.8 / 0081545.7	Fly-By	-	-	-	-	R
RNAV 1	TF	CK004	514327.0 / 0080334.0	Fly-By	10.5	133.9 / 138	-	-	R
RNAV 1	TF	ERTER	513343.3 / 0080336.8	Fly-By	9.7	180.2 / 184	-	-	R

GOTEM1N CAT C/D SID RWY34**GOTEIN**

Navigation Performance	Path Terminator	WPT Name	Latitude (N) / Longitude (W)	Fly-By or Fly-Over	Distance (NM)	True Track / Magnetic Track	Upper Limit/ Lower Limit	Speed Limit (kts)	Remarks
RNAV 1	CA	RWY34	-	-	-	339.9 / 344	- / 2500	-	-
RNAV 1	DF	GOTEM	514926.0 / 0074912.1	Fly-By	-	-	-	-	R

KURUM1N CAT C/D SID RWY34**KURUIN**

Navigation Performance	Path Terminator	WPT Name	Latitude (N) / Longitude (W)	Fly-By or Fly-Over	Distance (NM)	True Track / Magnetic Track	Upper Limit/ Lower Limit	Speed Limit (kts)	Remarks
RNAV 1	CA	RWY34	-	-	-	339.9 / 344	- / 2500	-	-
RNAV 1	DF	KURUM	521343.1 / 0083952.5	Fly-By	-	-	-	-	R

ORTOM1N CAT C/D SID RWY34**ORTOIN**

Navigation Performance	Path Terminator	WPT Name	Latitude (N) / Longitude (W)	Fly-By or Fly-Over	Distance (NM)	True Track / Magnetic Track	Upper Limit/ Lower Limit	Speed Limit (kts)	Remarks
RNAV 1	CA	RWY34	-	-	-	339.9 / 344	- / 2500	-	-
RNAV 1	DF	CK005	514216.0 / 0084600.0	Fly-By	-	-	-	-	L
RNAV 1	TF	CK006	512950.0 / 0083821.0	Fly-By	13.3	159.0 / 163	-	-	-
RNAV 1	TF	SOVIX	512539.1 / 0083345.6	Fly-By	5.1	145.5 / 149	-	-	-
RNAV 1	TF	ORTOM	511614.9 / 0081757.7	Fly-By	13.7	133.4 / 137	-	-	-

SOVIX1N CAT C/D SID RWY34**SOVIIN**

Navigation Performance	Path Terminator	WPT Name	Latitude (N) / Longitude (W)	Fly-By or Fly-Over	Distance (NM)	True Track / Magnetic Track	Upper Limit/ Lower Limit	Speed Limit (kts)	Remarks
RNAV 1	CA	RWY34	-	-	-	339.9 / 344	- / 2500	-	-
RNAV 1	DF	CK005	514216.0 / 0084600.0	Fly-By	-	-	-	-	L
RNAV 1	TF	CK006	512950.0 / 0083821.0	Fly-By	13.3	159.0 / 163	-	-	-
RNAV 1	TF	SOVIX	512539.1 / 0083345.6	Fly-By	5.1	145.5 / 149	-	-	-

TISMO1N CAT C/D SID RWY34**TISMIN**

Navigation Performance	Path Terminator	WPT Name	Latitude (N) / Longitude (W)	Fly-By or Fly-Over	Distance (NM)	True Track / Magnetic Track	Upper Limit/ Lower Limit	Speed Limit (kts)	Remarks
RNAV 1	CA	RWY34	-	-	-	339.9 / 344	- / 2500	-	-
RNAV 1	DF	TISMO	520804.8 / 0080047.4	Fly-By	-	-	-	-	R

VAPAL1N CAT C/D SID RWY34**VAPAIN**

Navigation Performance	Path Terminator	WPT Name	Latitude (N) / Longitude (W)	Fly-By or Fly-Over	Distance (NM)	True Track / Magnetic Track	Upper Limit/ Lower Limit	Speed Limit (kts)	Remarks
RNAV 1	CA	RWY34	-	-	-	339.9 / 344	- / 2500	-	-
RNAV 1	DF	VAPAL	515243.1 / 0074918.3	Fly-By	-	-	-	-	R