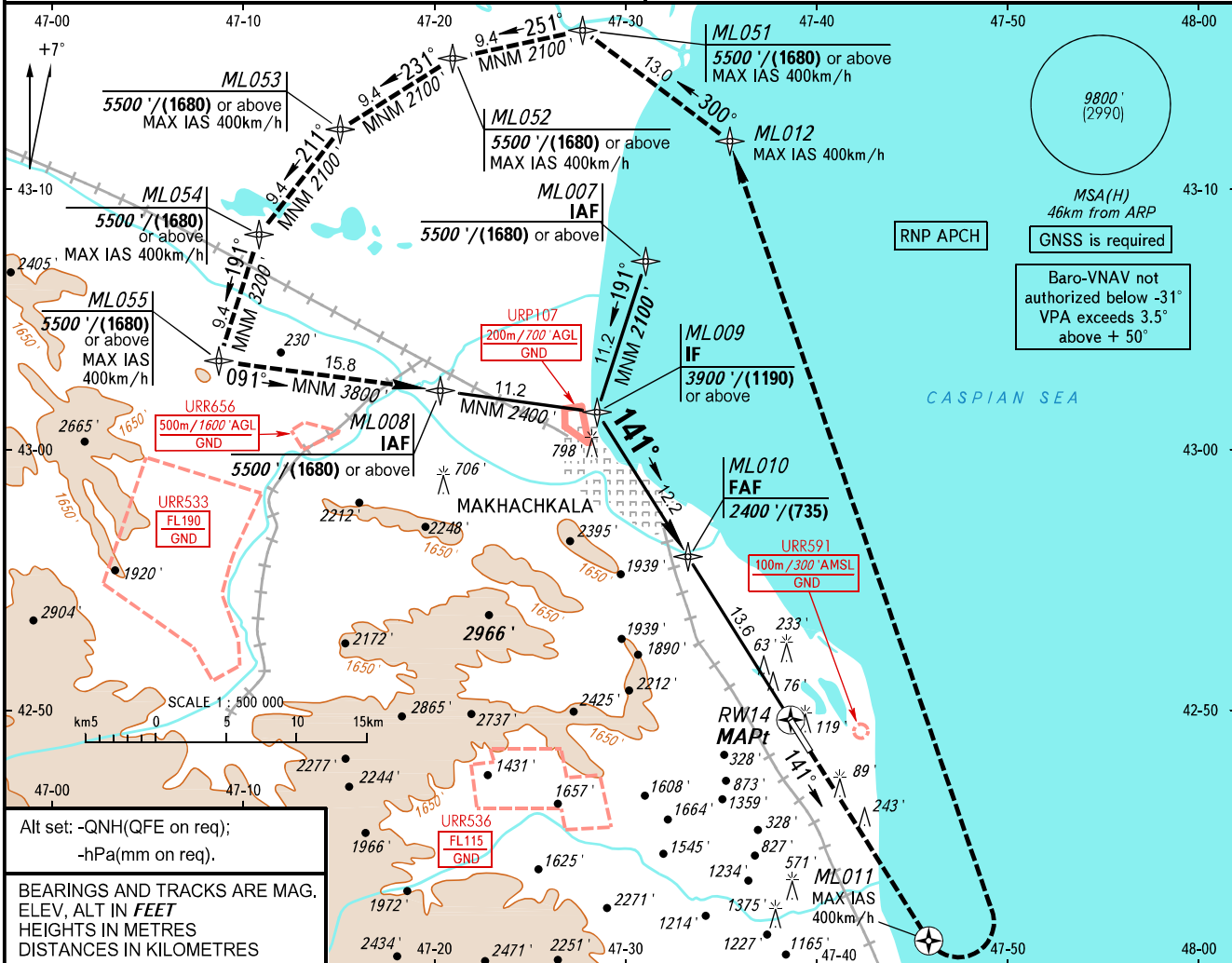


**INSTRUMENT
APPROACH
CHART - ICAO**

RADAR
START **121.300**
121.300

MAKHACHKALA, RUSSIA
UYTASH
RNP RWY 14

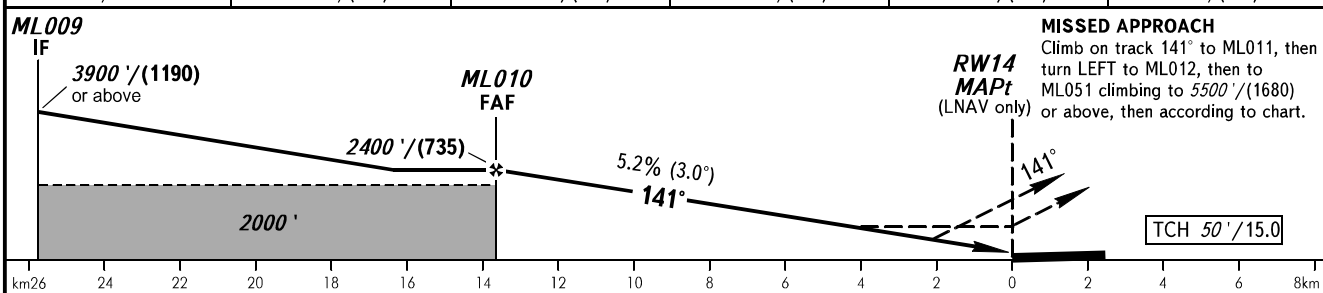
TRANSITION LEVEL: **0** AD ELEV: **16' / 5m**
TRANSITION ALTITUDE: **10000'** THR ELEV: **0' / 0.0m**



Alt set: -QNH(QFE on req);
-hPa(mm on req).

BEARINGS AND TRACKS ARE MAG.
ELEV, ALT IN FEET
HEIGHTS IN METRES
DISTANCES IN KILOMETRES

DIST to RW14	12.0	10.0	8.0	6.0	4.0
ALTITUDE/HEIGHT	2114' / (645)	1770' / (540)	1426' / (435)	1082' / (330)	738' / (225)



OCA(H)		A	B	C	D
Straight-in Approach	LNAV	690' (690')	690' (690')	690' (690')	690' (690')
	LNAV/VNAV	208' (208')	218' (218')	228' (228')	250' (250')
Circling		790' (770')	830' (810')	1720' (1700')	1870' (1860')

TRANSITION LEVEL:
- FL110 when QNH is 1013 hPa (760mm mercury column) or above;
- FL120 when QNH is 977 hPa (733mm mercury column) or above, but less than 1013 hPa (760mm mercury column);
- FL130 when QNH is less than 977 hPa (733mm mercury column).

WARNING:
1. Visual manoeuvring west of the aerodrome is PROHIBITED.
2. Turn before passing MAPt is PROHIBITED.
3. MAPt at RW14. Timing not authorized for defining MAPt.

GROUND SPEED	km/h	150	180	210	240	270	300	330	360	390	420	450
	m/s	2.2	2.6	3.0	3.5	3.9	4.3	4.8	5.2	5.6	6.1	6.5
RATE OF DESCENT	ft/min	427	512	597	682	768	853	938	1024	1109	1194	1280

CHANGE: New chart