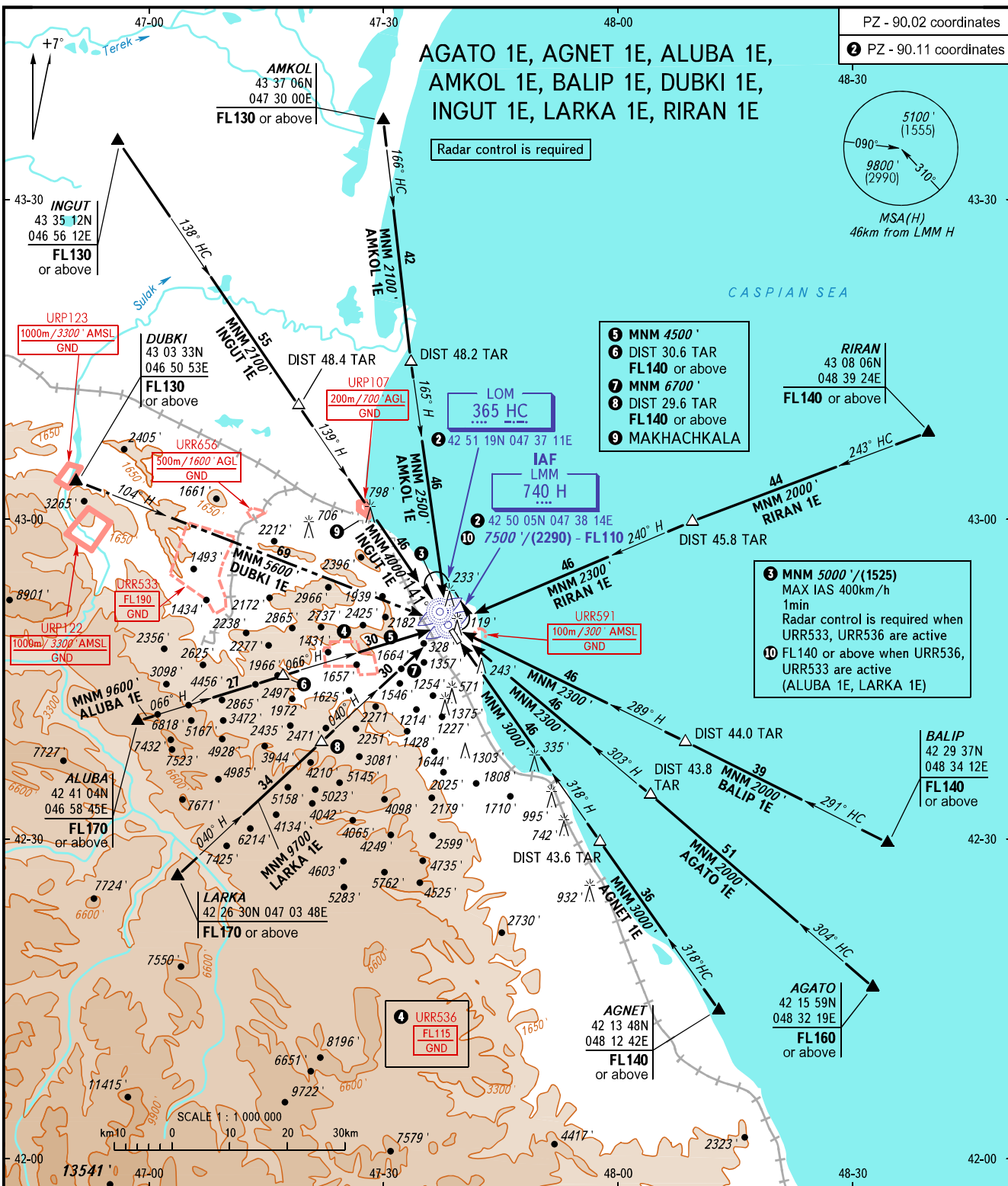


STANDARD ARRIVAL CHART
INSTRUMENT (STAR) - ICAO

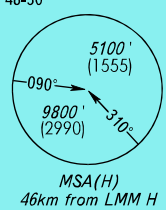
MAKHACHKALA, RUSSIA

UYTASH
RWY 14

TRANSITION
LEVEL : 1



PZ - 90.02 coordinates
PZ - 90.11 coordinates



- 5 MNM 4500'
- 6 DIST 30.6 TAR
FL 140 or above
- 7 MNM 6700'
- 8 DIST 29.6 TAR
FL 140 or above
- 9 MAKHACHKALA

- 3 MNM 5000' (1525)
MAX IAS 400km/h
1min
Radar control is required when
URR533, URR536 are active
- 10 FL 140 or above when URR536,
URR533 are active
(ALUBA 1E, LARKA 1E)

APPROACH 119.700
RADAR 121.300
START 121.300

- 1 TRANSITION LEVEL:
- FL110 when QNH is 1013 hPa (760mm mercury column) or above;
 - FL120 when QNH is 977 hPa (733mm mercury column) or above,
but less than 1013 hPa (760mm mercury column);
 - FL130 when QNH is less than 977 hPa (733mm mercury column).

WARNING
DUBKI 1E is not AVBL when URR533 is active.

BEARINGS AND TRACKS ARE MAGNETIC
ALTITUDES AND ELEVATIONS IN FEET
HEIGHTS IN METRES
DISTANCES IN KILOMETRES

Alt set: -QNH(QFE on req);
-hPa(mm on req).

CHANGE: New chart