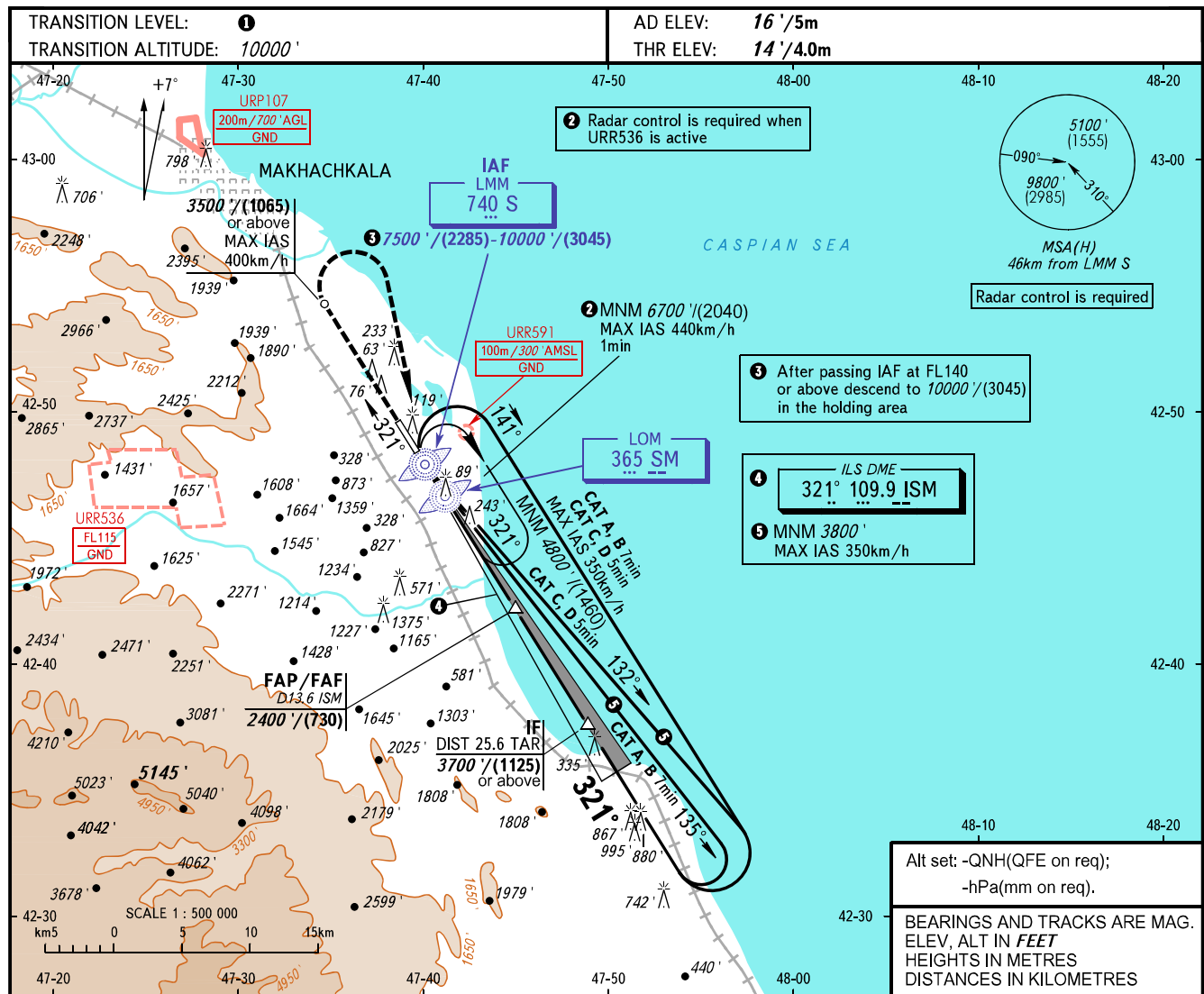


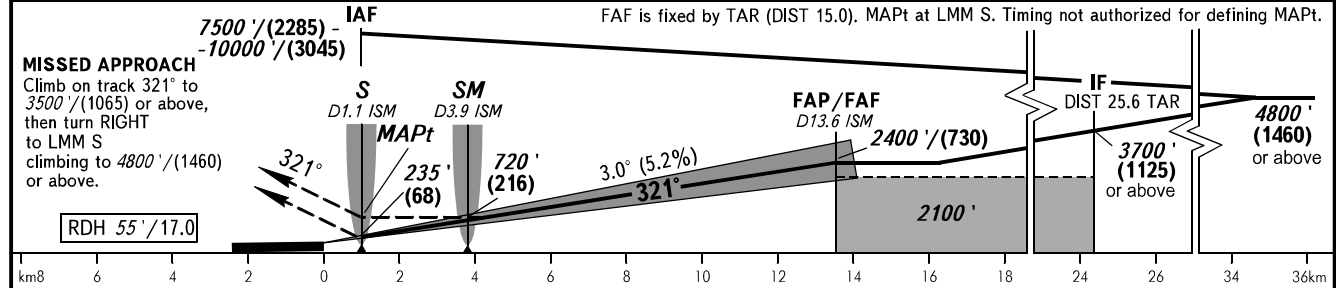
INSTRUMENT  
APPROACH  
CHART - ICAO

RADAR  
START 121.300  
121.300

MAKHACHKALA, RUSSIA  
UYTASH  
ILS X CAT I, LOC X RWY 32



DME ISM	4.0	6.0	8.0	10.0	12.0
ALTITUDE/HEIGHT	755'/(225)	1098'/(330)	1442'/(435)	1785'/(540)	2130'/(645)



		OCA(H)				
		A	B	C	D	
Straight-in Approach	CAT I	2.5%*	466' (452')	476' (462')	485' (472')	495' (482')
	CAT I	3.5%*	192' (178')	201' (188')	211' (198')	221' (208')
	LOC		740' (730')	740' (730')	740' (730')	740' (730')
Circling			790' (770')	830' (810')	1720' (1700')	1870' (1860')

\* MNM climb gradient

**1** TRANSITION LEVEL:  
- FL110 when QNH is 1013 hPa (760mm mercury column) or above;  
- FL120 when QNH is 977 hPa (733mm mercury column) or above, but less than 1013 hPa (760mm mercury column);  
- FL130 when QNH is less than 977 hPa (733mm mercury column).

**WARNING:**  
1. Visual manoeuvring west of the aerodrome is PROHIBITED.  
2. Turn before passing MAPt is PROHIBITED.  
3. DME ISM reads zero at RWY 32 THR.

GROUND SPEED	km/h	150	180	210	240	270	300	330	360	390	420	450
RATE OF DESCENT	m/s	2.2	2.6	3.0	3.5	3.9	4.3	4.8	5.2	5.6	6.1	6.5
	ft/min	427	512	597	682	768	853	938	1024	1109	1194	1280