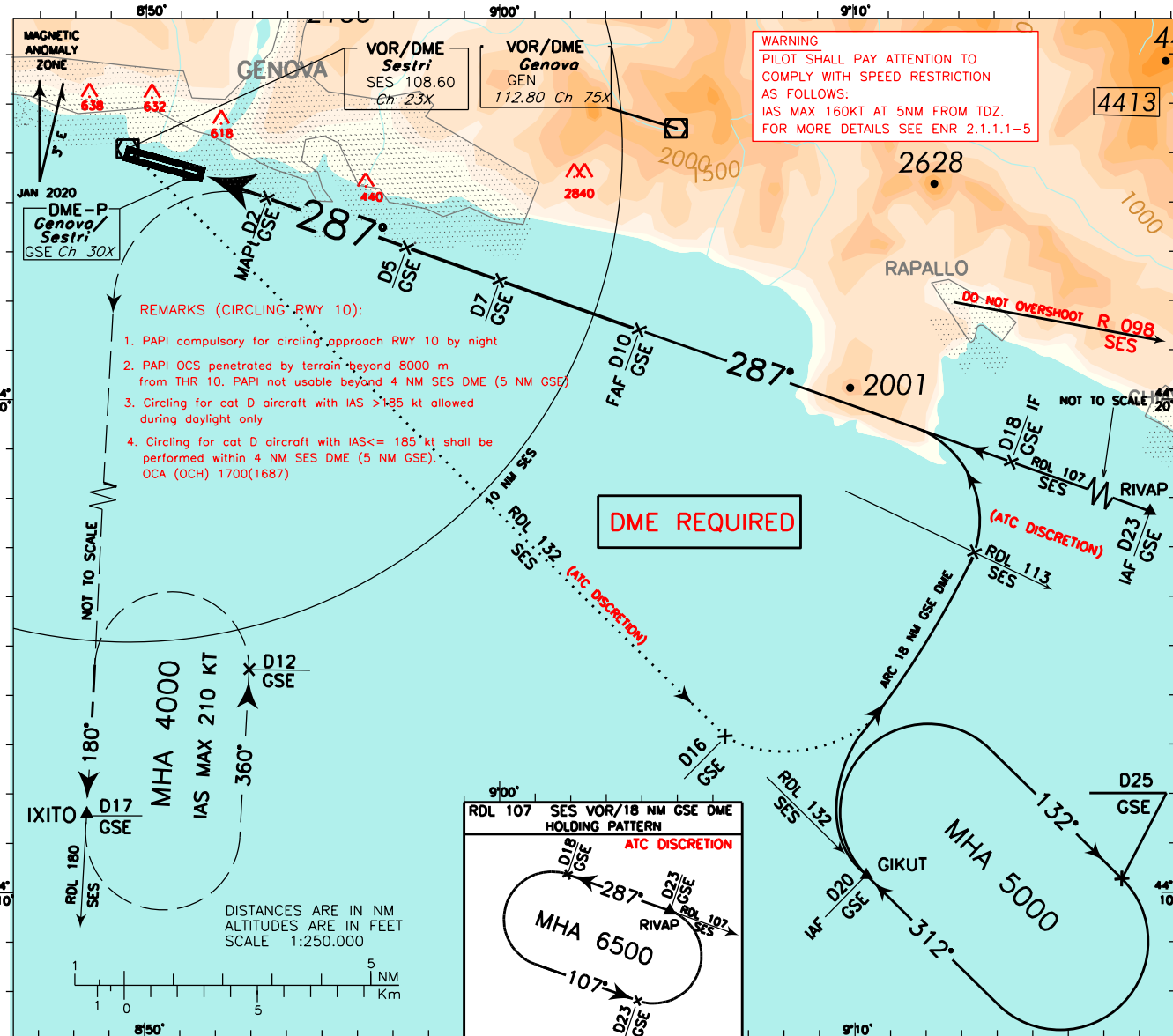


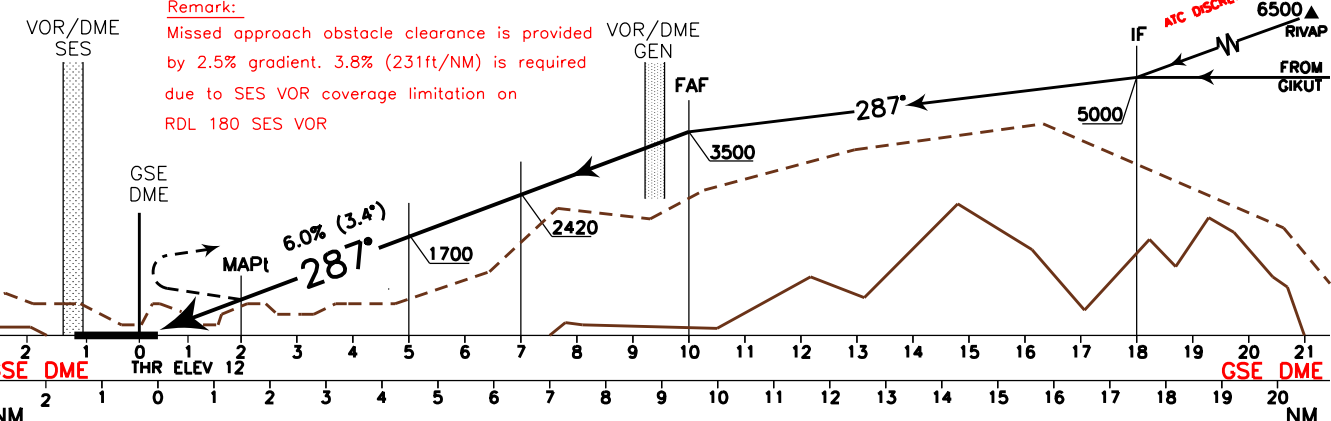
ICAO - INSTRUMENT APPROACH CHART

AMDT 4
 DOC 8168 - ED. 5 - 2006
 CHANGE: MHA OVER IXITO RAISED TO 4000FT; MISSED APPROACH DESCRIPTION UPDATED AND REMARK ADDED

WARNING: Final approach track (RDL 107) is offset 4.12° from RCL. It intersects RCL after THR 28. At 1400 m from the THR, the final track is within 150 m from RCL.	APP	Genova APP	119.600	AD ELEV	L M J	GENOVA/SESTRI VOR-Y RWY 28
		Genova Radar	119.600 (119.850)	13		
	TWR	Genova TWR	118.600			
	ATIS	Genova Terminal Information	122.830			



TRANSITION ALT 7000 **MISSED APPROACH:** At 2 NM GSE DME turn left as soon as practicable (IAS MAX 200 kt) to join and follow RDL 180 SES VOR (TR 180°) climbing to 4000 ft and proceed bound to IXITO (RDL 180 SES VOR/17 NM GSE DME) holding pattern.



STRAIGHT IN APPROACH	OCA (OCH)				SEE REMARKS 1, 2, 3 and 4 CIRCLING 	GS	FT PER MIN	D5-MAP1		MAP1-THR		THR	ALT (HGT)	MNM SECT ALT	
	A	B	C	D				3 NM	1.45 NM	5 NM	SES			VOR	
CIRCLING	950(937)				allowed only south of the RWY	180	1008	1 : 00	0 : 29	3	980 (967)	3	980 (967)		
	1360(1347)					3020(3007) (3) (4)	160	896	1 : 08	0 : 33	4	1340 (1327)	4	1340 (1327)	
STRAIGHT IN APPROACH	790(777)					120	672	1 : 30	0 : 44	7	2420 (2407)	7	2420 (2407)		
						100	560	1 : 48	0 : 52	8	2780 (2767)	8	2780 (2767)		