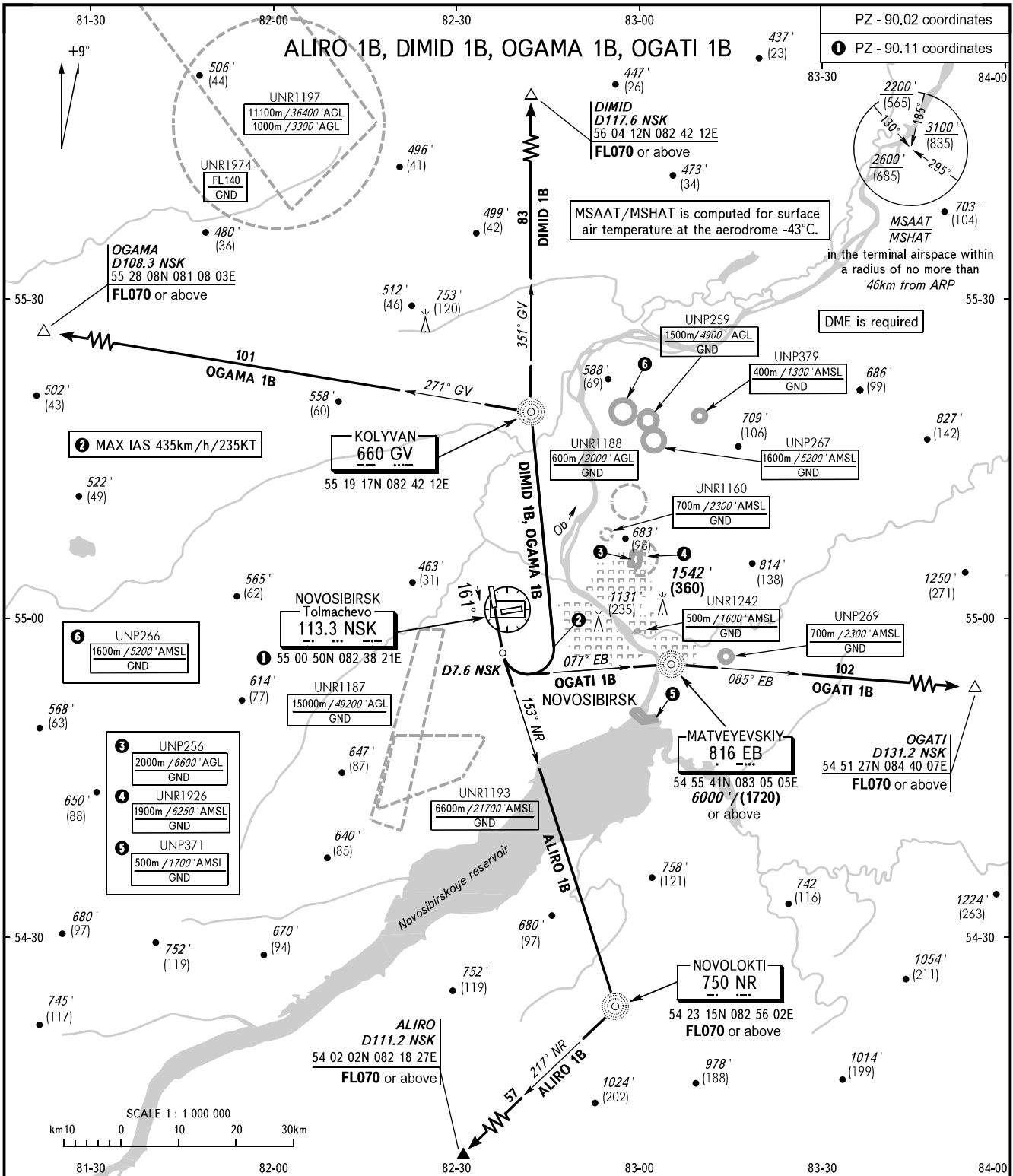


STANDARD DEPARTURE CHART
INSTRUMENT (SID) - ICAO

TRANSITION ALT : **6000'**
TRANSITION HGT : **(1720)**

NOVOSIBIRSK, RUSSIA
TOLMACHEVO
RWY 16



TOWER **126.700**
RADAR **122.000**
APPROACH **127.500**

MINIMUM CLIMB GRADIENTS (due to airspace structure):
ALIRO 1B: 4.7% up to FL070;
OGATI 1B: 4.1% up to 6000'/(1720).

BEARINGS AND TRACKS ARE MAGNETIC
ALTITUDES IN *FEET*, HEIGHTS IN METRES
ELEVATIONS IN METRES AND *FEET*
DISTANCES IN KILOMETRES

Alt set: -QNH(QFE on req);
-hPa(mm on req).

CHANGE: UNP379