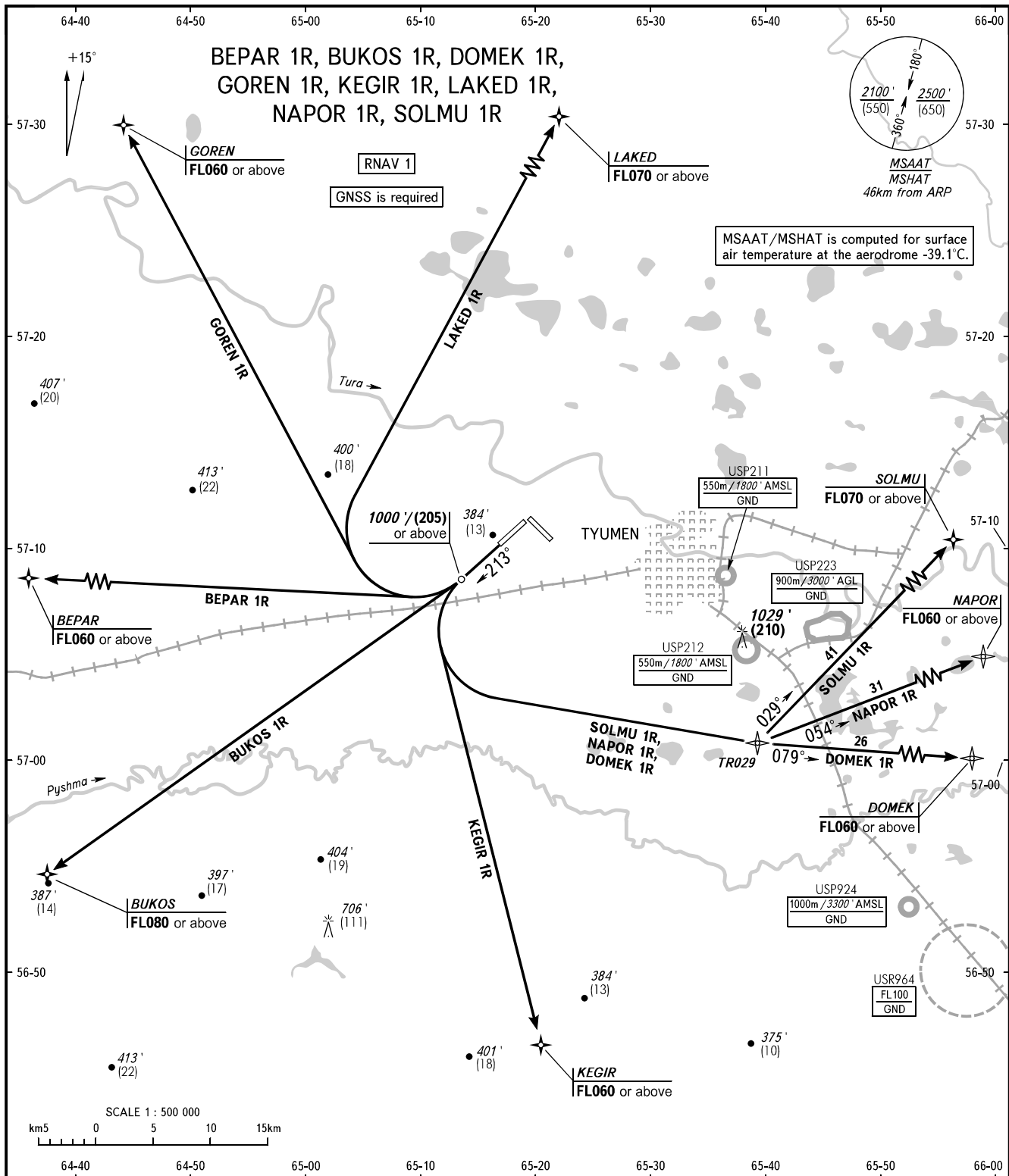


STANDARD DEPARTURE CHART
INSTRUMENT (SID) - ICAO

TRANSITION
ALTITUDE: 3000'

TYUMEN, RUSSIA
ROSHCHINO
RNAV RWY 21



START	118.200	<p>WARNING:</p> <p>1. Turn before passing DER is PROHIBITED.</p> <p>2. There are close-in obstacles (trees) located to the right of take-off heading at DIST 263 - 649m from DER with MAX ELEV 450'.</p> <p>MINIMUM CLIMB GRADIENTS (due to airspace structure):</p> <p>KEGIR 1R: 3.6% up to FL060; BEPAR 1R: 4.8% up to FL080.</p>
RADAR	126.100	
<p>BEARINGS AND TRACKS ARE MAGNETIC ALTITUDES IN FEET HEIGHTS IN METRES ELEVATION IN FEET AND METRES DISTANCES IN KILOMETRES</p>		<p>Alt set: -QNH(QFE on req); -hPa(mm on req).</p>