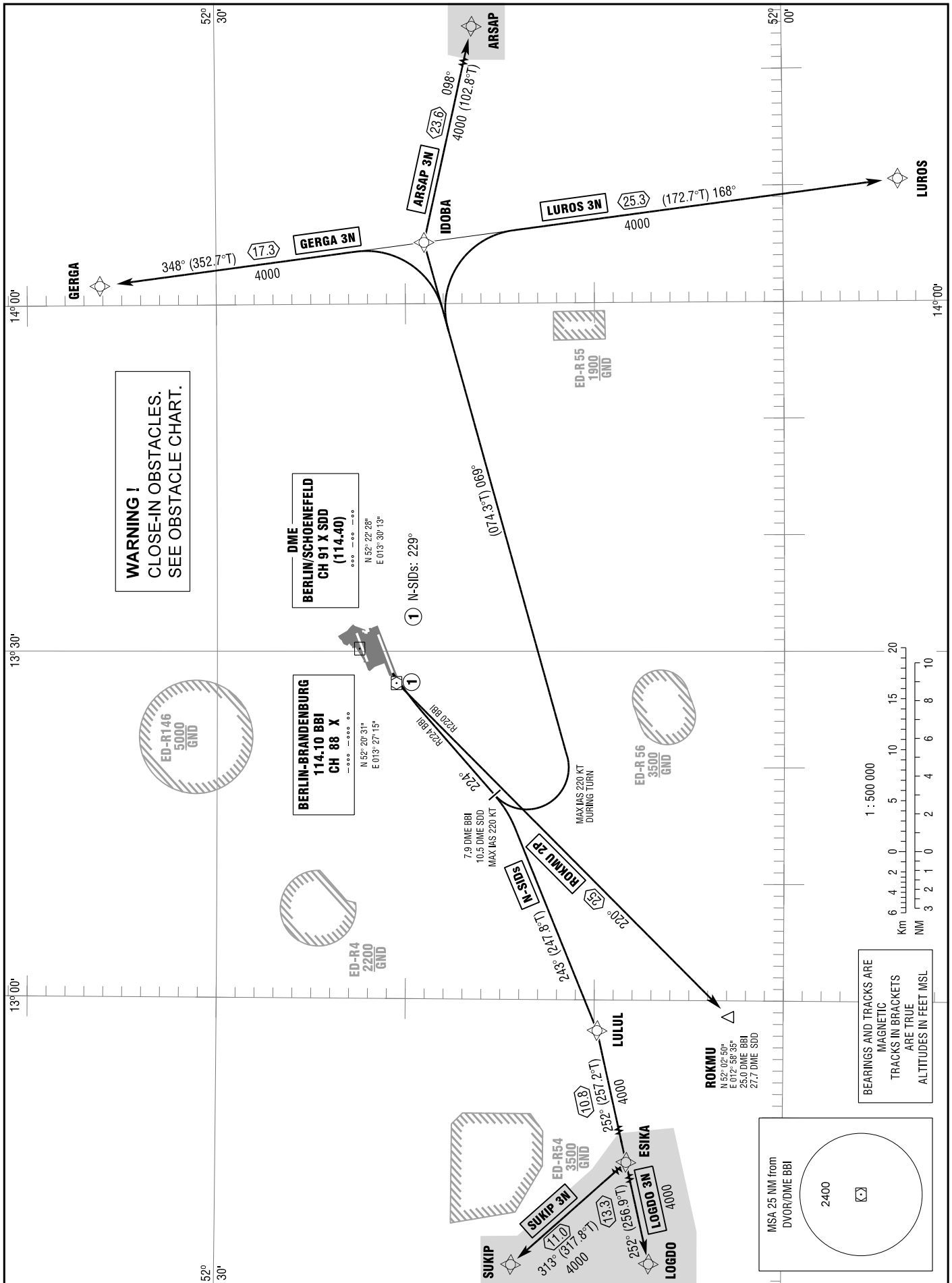


STANDARD DEPARTURE
CHART - INSTRUMENT
(SID)

TRANSITION
ALTITUDE 5000
VAR 5° E

BERLIN ATIS	123.780	BERLIN GROUND (N)	129.505
BERLIN DELIVERY	121.605	BERLIN GROUND (S)	121.705
BERLIN APRON (N)	129.605	BERLIN TOWER	118.805
BERLIN APRON (S)	121.855	BREMEN RADAR	120.630

BERLIN BRANDENBURG
RWY 24L
ARSAP 3N GERGA 3N LOGDO 3N
LUIROS 3N ROKMU 2P SUKIP 3N



Correction: Runway designator and variation.