

STANDARD DEPARTURE CHART -
INSTRUMENT (SID) - ICAO

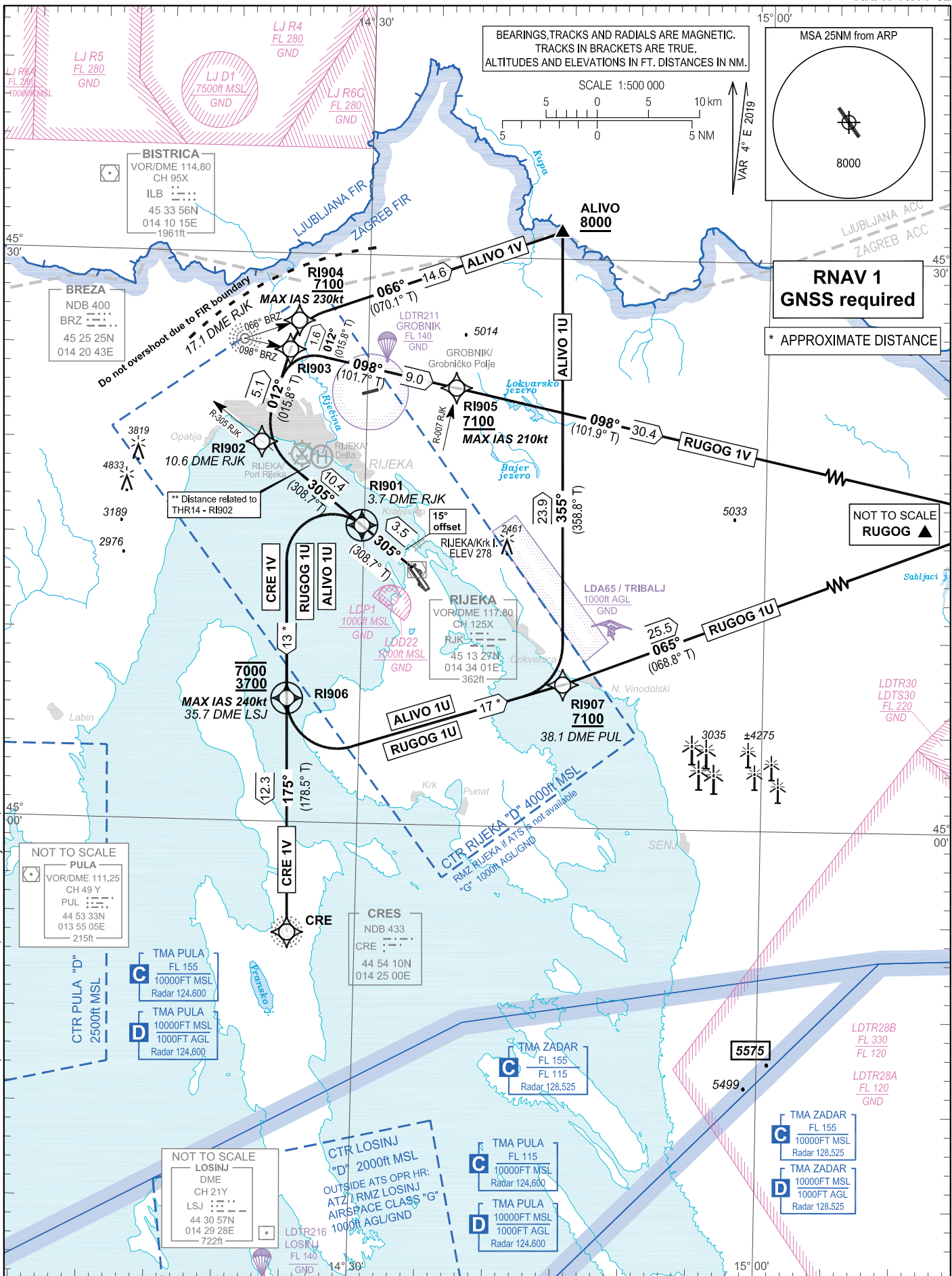
TRANSITION ALTITUDE
10 000

| | |
|--------------|---------|
| RIJEKA TOWER | 119.000 |
| PULA RADAR | 127.675 |
| | 124.600 |

| | | |
|----------|----------|----------|
| CRE 1V | ALIVO 1U | RUGOG 1U |
| ALIVO 1V | RUGOG 1V | |

RIJEKA / Krk I. (LDRI)

RNAV RWY 32



RIJEKA / Krk I. (LDRI)

RNAV RWY 32

CRE 1V ALIVO 1U RUGOG 1U
ALIVO 1V RUGOG 1V

GENERAL INFORMATION AND REQUIREMENTS FOR ALL SIDS

- Calculation of the SIDs is based on an all-engines operative minimum net climb gradient of 3.3 per cent (201 ft/NM). Where a greater climb gradient for a specific SID (or part of SID) is necessary, this is indicated in the tabular description of the route.

- After take off, climb initially to 8000 ft. After passing 4000 ft, contact Pula Radar on 127.675 MHz.

WARNING: Back-up conventional (NON-RNAV) procedure, in case of loss of RNAV 1 capability or RNAV system failure, below minimum radar vectoring altitude for RNAV SID CRE 1V only:

Climb on track 305°. At 3.7 DME RJK turn LEFT climbing to intercept and follow QDM 175° CRE NDB to 35.7 DME LSJ. Cross 35.7 DME LSJ at or above 3700 ft AMSL, but at or below 7000 ft AMSL. After crossing 35.7 DME LSJ proceed via RNAV SID flight procedure filed in FPL or according to ATC instruction. MAX IAS 240 kt. MNM PDG 4.0% (243 ft/NM) until 35.7 DME LSJ.

LDRI RNAV STANDARD INSTRUMENT DEPARTURE RWY 32

Proposed tabular description for navigation database coding

| Serial number | Route | Path descriptor | Waypoint name | Flyover | Course °M (°T) | Magnetic variation | Distance (NM) | Turn direction | Altitude (ft) | Speed (kt) | Remarks | NAV SPEC |
|---------------|--------|-----------------|---------------|---------|-------------------|--------------------|---------------|----------------|----------------|------------|---|----------|
| 010 | CRE 1V | CF | RI901 | Y | 305° (308.7°T) | 4°E | 3.5 | - | - | - | ⁽¹⁾ MNM PDG 4.0% (243 ft/NM) until RI906 | RNAV 1 |
| 020 | | DF | RI906 | Y | - | 4°E | - | L | -7000 +3700 | -240 | ⁽²⁾ Initial DEP track 15° offset of the RWY C/L. | |
| 030 | | TF | CRE | - | 175° (178.5°T) | 4°E | 12.3 | - | - | - | | |

WARNING: Back-up conventional (NON-RNAV) procedure, in case of loss of RNAV 1 capability or RNAV system failure, below minimum radar vectoring altitude for RNAV SIDs ALIVO 1U and RUGOG 1U only:

Climb on track 305°. At 3.7 DME RJK turn LEFT climbing to intercept and follow QDM 175° CRE NDB to 35.7 DME LSJ. Cross 35.7 DME at or above 3700 ft AMSL, but at or below 7000 ft AMSL. After crossing 35.7 DME LSJ proceed via RNAV SID flight procedure filed in FPL or according to ATC instruction. MAX IAS 240 kt. MNM PDG 4.2% (255 ft/NM) to 7100 ft AMSL.

LDRI RNAV STANDARD INSTRUMENT DEPARTURE RWY 32

Proposed tabular description for navigation database coding

| Serial number | Route | Path descriptor | Waypoint name | Flyover | Course °M (°T) | Magnetic variation | Distance (NM) | Turn direction | Altitude (ft) | Speed (kt) | Remarks | NAV SPEC |
|---------------|----------|-----------------|---------------|---------|--------------------|--------------------|---------------|----------------|----------------|------------|---|----------|
| 010 | ALIVO 1U | CF | RI901 | Y | 305° (308.7°T) | 4°E | 3.5 | - | - | - | ⁽¹⁾ MNM PDG 4.2% (255 ft/NM) to 7100 ft AMSL | RNAV 1 |
| 020 | | DF | RI906 | Y | - | 4°E | - | L | -7000 +3700 | -240 | ⁽²⁾ Initial DEP track 15° offset of the RWY C/L. | |
| 030 | | DF | RI907 | - | - | 4°E | - | L | +7100 | | | |
| 040 | | TF | ALIVO | - | 355° (358.8° T) | 4°E | 23.9 | L | +8000 | - | | |
| 010 | RUGOG 1U | CF | RI901 | Y | 305° (308.7°T) | 4°E | 3.5 | - | - | - | ⁽¹⁾ MNM PDG 4.2% (255 ft/NM) to 7100 ft AMSL | RNAV 1 |
| 020 | | DF | RI906 | Y | - | 4°E | - | L | -7000 +3700 | -240 | ⁽²⁾ Initial DEP track 15° offset of the RWY C/L. | |
| 030 | | DF | RI907 | - | - | 4°E | - | L | +7100 | | | |
| 040 | | TF | RUGOG | - | 065° (068.8° T) | 4°E | 25.5 | - | - | - | | |

CHANGE: TMA classification vertical limits; Note for RMZ RIJEKA; Parachute activity zones; Editorial.

WARNING: Back-up conventional (NON-RNAV) procedure, in case of loss of RNAV 1 capability or RNAV system failure, below minimum radar vectoring altitude for RNAV SID ALIVO 1V only:

Climb on R-305 RJK. At 10.6 DME RJK turn RIGHT on track 012° climbing to intercept and follow QDR 066° BRZ NDB to ALIVO. On passing 7100 ft AMSL proceed via RNAV SID ALIVO 1V or according to ATC instruction. MAX IAS 230 kt. MNM PDG 6.8% (413 ft/NM) to 7100 ft AMSL. Due to FIR boundary, do not overshoot 17.1 DME RJK during the turns.

LDRI RNAV STANDARD INSTRUMENT DEPARTURE RWY 32

Proposed tabular description for navigation database coding

| Serial number | Route | Path descriptor | Waypoint name | Flyover | Course °M (°T) | Magnetic variation | Distance (NM) | Turn direction | Altitude (ft) | Speed (kt) | Remarks | NAV SPEC |
|---------------|----------|-----------------|---------------|---------|-------------------|--------------------|---------------|----------------|---------------|------------|--|----------|
| 010 | ALIVO 1V | CF | RI902 | - | 305° (308.7°T) | 4°E | 10.4 | - | - | - | (1) MNM PDG 6.8% (413 ft/NM) to 7100 ft AMSL. | RNAV 1 |
| 020 | | TF | RI904 | - | 012° (015.8°T) | 4°E | 6.7 | - | +7100 | -230 | (2) Initial DEP track 15° offset of the RWY C/L. | |
| 030 | | TF | ALIVO | - | 066° (070.1°T) | 4°E | 14.6 | - | +8000 | - | | |

WARNING: Back-up conventional (NON-RNAV) procedure, in case of loss of RNAV 1 capability or RNAV system failure, below minimum radar vectoring altitude for RNAV SID RUGOG 1V only:

Climb on R-305 RJK. At 10.6 DME RJK turn RIGHT on track 012° climbing to intercept and follow QDR 098° BRZ NDB to RUGOG. Cross R-007 RJK at or above 7100 ft AMSL. On passing 7100 ft AMSL proceed via RNAV SID RUGOG 1V or according to ATC instruction. MAX IAS 210 kt. MNM PDG 6.6% (401 ft/NM) to 7100 ft AMSL. Due to FIR boundary, do not overshoot 17.1 DME RJK during the turns.

LDRI RNAV STANDARD INSTRUMENT DEPARTURE RWY 32

Proposed tabular description for navigation database coding

| Serial number | Route | Path descriptor | Waypoint name | Flyover | Course °M (°T) | Magnetic variation | Distance (NM) | Turn direction | Altitude (ft) | Speed (kt) | Remarks | NAV SPEC |
|---------------|----------|-----------------|---------------|---------|-------------------|--------------------|---------------|----------------|---------------|------------|--|----------|
| 010 | RUGOG 1V | CF | RI902 | - | 305° (308.7°T) | 4°E | 10.4 | - | - | - | (1) MNM PDG 6.6% (401 ft/NM) to 7100 ft AMSL. | RNAV 1 |
| 020 | | TF | RI903 | - | 012° (015.8°T) | 4°E | 5.1 | - | - | - | (2) Initial DEP track 15° offset of the RWY C/L. | |
| 030 | | TF | RI905 | - | 098° (101.7°T) | 4°E | 9.0 | - | +7100 | -210 | | |
| 040 | | TF | RUGOG | - | 098° (101.9°T) | 4°E | 30.4 | - | - | - | | |

Waypoint coordinates

| Waypoint name | WGS-84 latitude | WGS-84 longitude |
|---------------|-----------------|------------------|
| ALIVO | 453124N | 0144421E |
| RUGOG | 451641N | 0151845E |
| CRE | 445410.37N | 0142459.57E |
| RI901 | 451543.1N | 0142949.8E |
| RI902 | 452001.0N | 0142211.8E |
| RI903 | 452455.0N | 0142409.9E |
| RI904 | 452627.3N | 0142447.0E |
| RI905 | 452304.4N | 0143640.2E |
| RI906 | 450630.5N | 0142432.7E |
| RI907 | 450732.1N | 0144504.8E |

CHANGE: TMA classification vertical limits: Note for RMZ RIJEKA; Parachute activity zones; Editorial.

OVA STRANICA JE NAMJERNO OSTAVLJENA PRAZNA
THIS PAGE INTENTIONALLY LEFT BLANK