

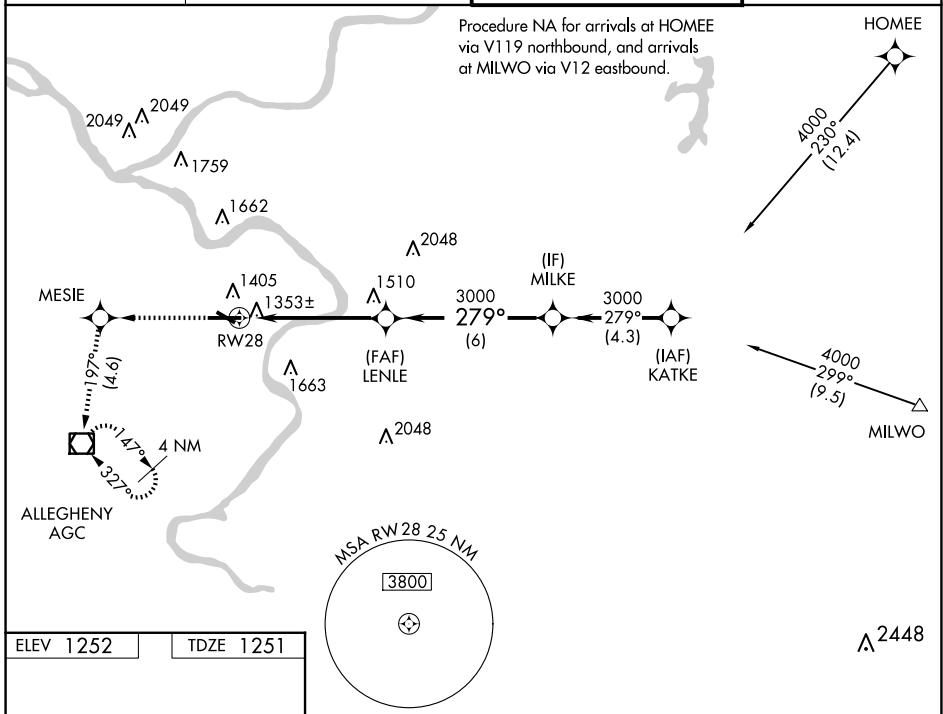
WAAS CH <b>65625</b> <b>W28A</b>	APP CRS <b>279°</b>	Rwy ldg TDZE <b>1251</b> Apt Elev <b>1252</b>	<b>6501</b>
--	------------------------	---	-------------

# RNAV (GPS) RWY 28

ALLEGHENY COUNTY (AGC)

RNP APCH - GPS.	MALSR 	MISSED APPROACH: Climb to 3000 direct MESIE and on course 197° to AGC VOR/DME and hold, continue climb-in-hold to 3000.
<p><b>⚠</b> For uncompensated Baro-VNAV systems, LNAV/VNAV NA below -16°C or above 54°C. Circling Rwy 13 NA at night. For inop ALS, increase LPV all Cats visibility to RVR 4500 and LNAV/VNAV all Cats visibility to RVR 5500.</p>		

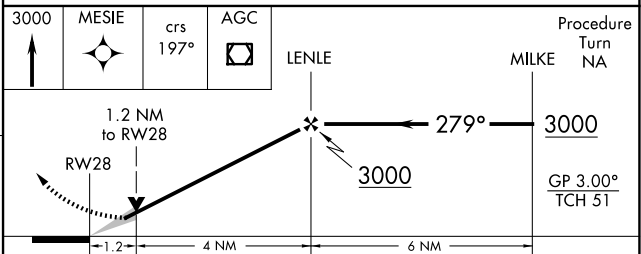
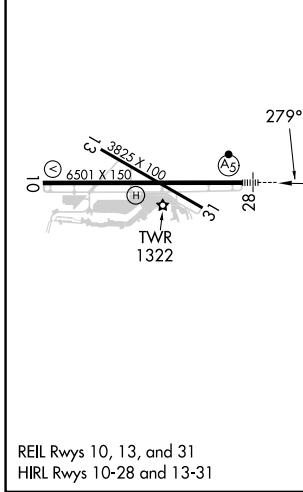
ATIS <b>120.55</b>	PITTSBURGH APP CON <b>119.35 285.575</b>	ALLEGHENY TOWER <b>121.1 239.0</b>	GND CON <b>121.7</b>
-----------------------	---	---------------------------------------	-------------------------



NE-4, 20 MAR 2025 to 17 APR 2025

NE-4, 20 MAR 2025 to 17 APR 2025

ELEV 1252	TDZE 1251
-----------	-----------



CATEGORY	A	B	C	D
LPV DA	1563/24 312 (400-½)			
LNAV/VNAV DA	1625/35 374 (400-⅝)			
LNAV MDA	1700/24 449 (500-½)		1700/45 449 (500-⅔)	
<input checked="" type="checkbox"/> CIRCLING	1720-1¼ 468 (500-1¼)		1980-2 728 (800-2) 1980-2¼ 728 (800-2¼)	