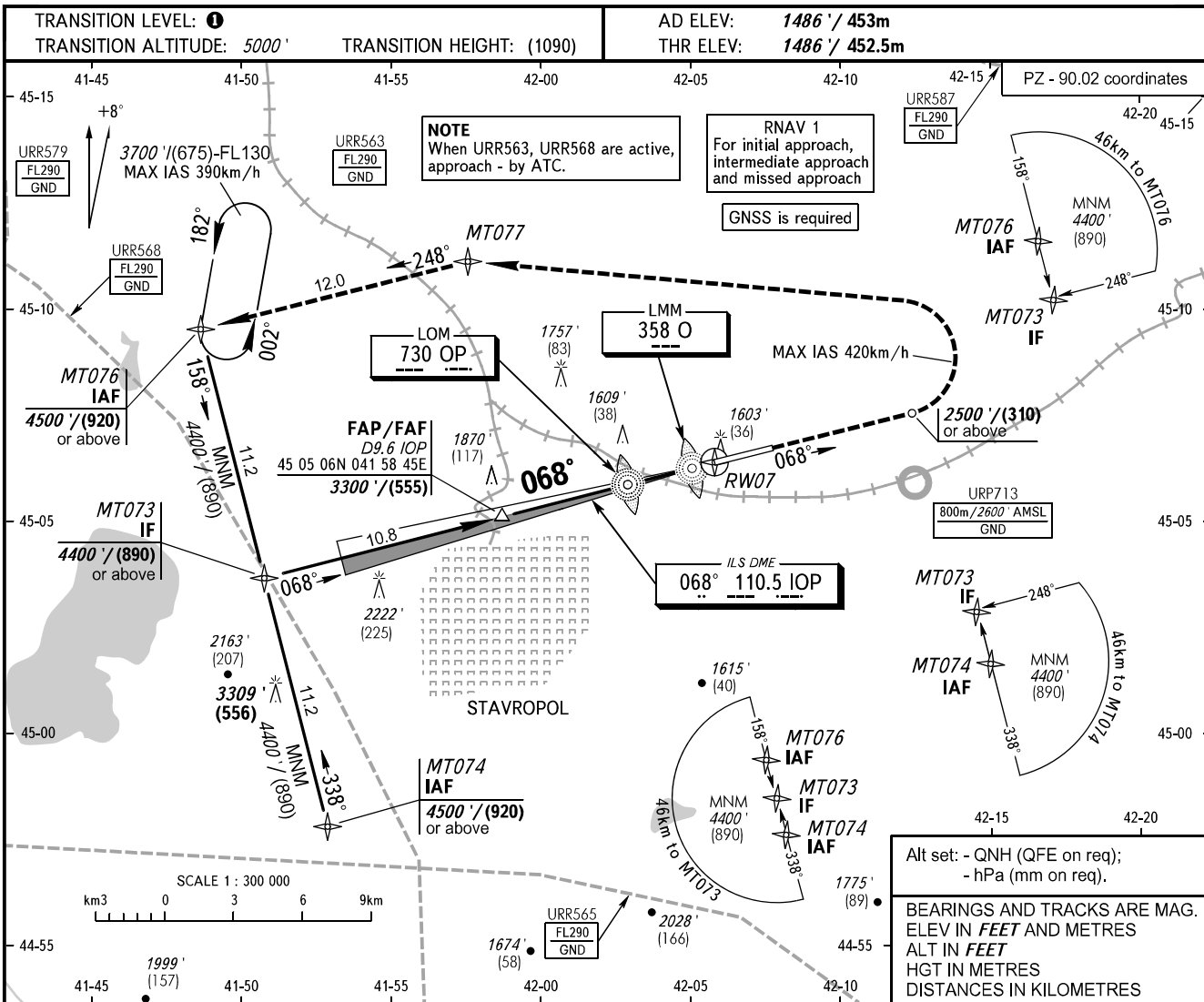


**INSTRUMENT  
APPROACH  
CHART - ICAO**

TOWER **120.900**

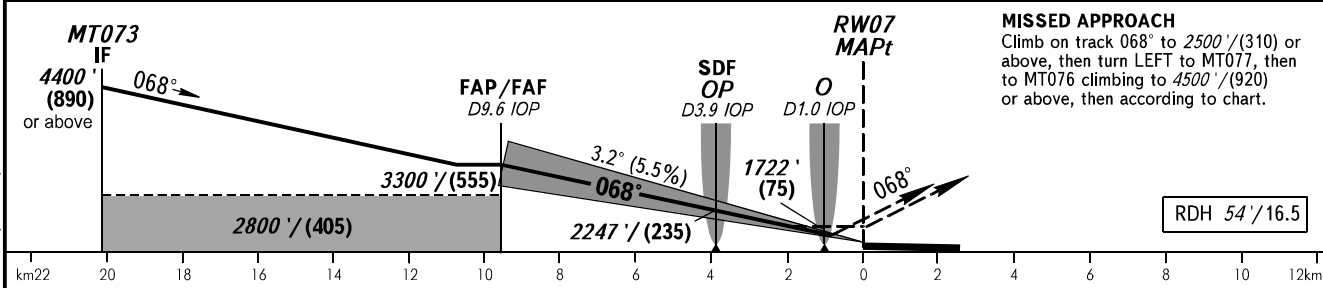
**STAVROPOL, RUSSIA**  
SHPAKOVSKOYE  
ILS Z CAT I, LOC Z RWY 07



Alt set: - QNH (QFE on req);  
- hPa (mm on req).

BEARINGS AND TRACKS ARE MAG.  
ELEV IN FEET AND METRES  
ALT IN FEET  
HGT IN METRES  
DISTANCES IN KILOMETRES

DME IOP	9.6	8.0	6.0	4.0	2.0
ALTITUDE/HEIGHT	3300' / (555)	2990' / (460)	2630' / (350)	2270' / (240)	1910' / (130)



**MISSED APPROACH**  
Climb on track 068° to 2500' / (310) or above, then turn LEFT to MT077, then to MT076 climbing to 4500' / (920) or above, then according to chart.

OCA(H)		A	B	C	D	<p><b>TRANSITION LEVEL:</b></p> <ul style="list-style-type: none"> <li>- FL060 when QNH is 1013 hPa (760mm mercury column) or above;</li> <li>- FL070 when QNH is 977 hPa (733mm mercury column) or above, but less than 1013 hPa (760mm mercury column);</li> <li>- FL080 when QNH is less than 977 hPa (733mm mercury column).</li> </ul> <p><b>WARNING</b> ILS DME IOP reads zero at RWY 07 THR.</p>
Straight-in Approach	CAT I	1652' (167') (51)	1665' (179') (55)	1673' (187') (57)	1683' (198') (60)	
	LOC With SDF	1810' (320') (100)	1810' (320') (100)	1810' (320') (100)	1810' (320') (100)	
	LOC WO SDF	1980' (500') (155)	1980' (500') (155)	1980' (500') (155)	1980' (500') (155)	
Circling		1940' (450') (140)	1980' (500') (155)	2150' (670') (205)	2270' (780') (240)	

GROUND SPEED	km/h	150	180	210	240	270	300	330	360	390
RATE OF DESCENT	m/s	2.3	2.8	3.2	3.7	4.1	4.6	5.1	5.5	6.0
	ft/min	451	541	632	722	812	902	992	1082	1173

CHANGE: Limiting bearing line withdrawn, MT073, MNM, URP713