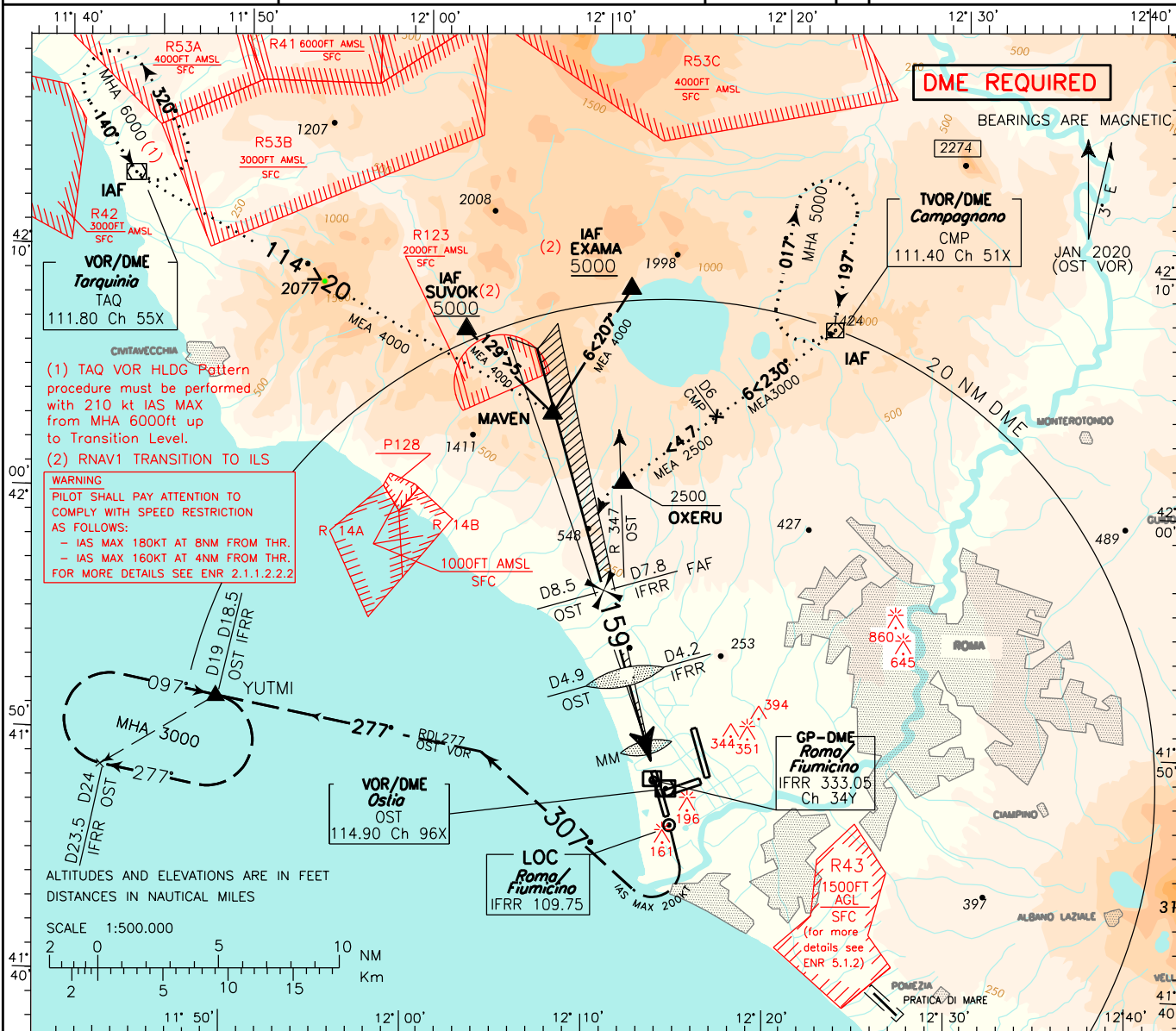


ICAO - INSTRUMENT APPROACH CHART

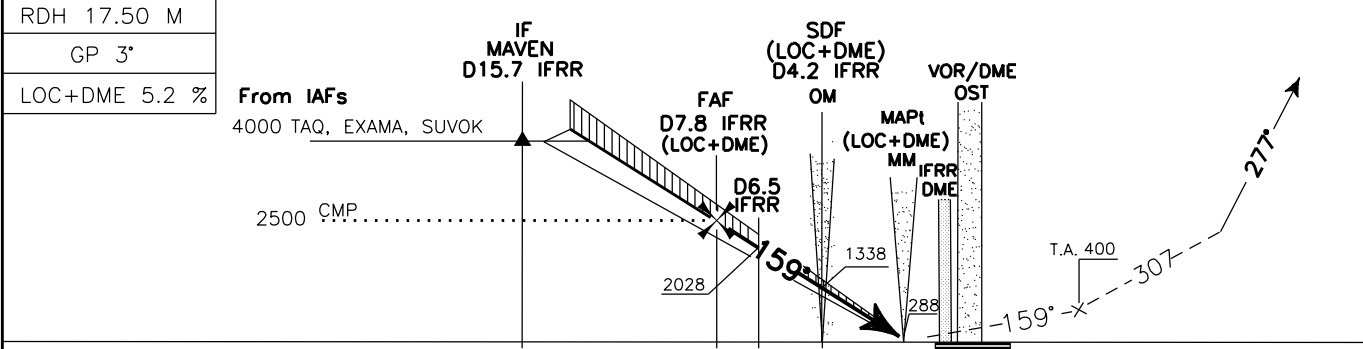
APP	Roma Arrivals Roma Director	125.500 (127.950) 131.250 (119.200)	AD ELEV	14	LIRF	ROMA/ FIUMICINO ILS (Cat.II) or LOC Y RWY 16R ATC DISCRETION ONLY
TWR	Fiume TWR	118.700 (127.625)				
ATIS	Fiume Arrival Information	126.125				

DOC. 8168 ED.7 - 2020 - AMDT9

CHANGE: NEW MISSED APPROACH AND SPEED RESTRICTION ADDED



TRANSITION ALT 6000
MISSED APPROACH: Proceed on TR 159° climbing to 3000 ft; crossing 400 ft, not before THR16R turn right (IAS MAX 200 kt) on TR 307° to intercept and follow RDL 277 OST VOR to YUTMI. Hold on RDL 277 OST VOR between 19 and 24 NM OST DME(18.5 and 23.5 NM IFRR DME) at 3000 ft.



OST DME	30	28	26	24	22	20	18	16	14	12	10	8	6	4	2	0	2	4	6	8	10	12	14	OST DME
IFRR DME	30	28	26	24	22	20	18	16	14	12	10	8	6	4	2	0	2	4	6	8	10	12	14	IFRR DME

STRAIGHT IN APPROACH	ILS CAT I	ILS CAT II	LOC	CIRCLING	A	B	C	D	FT per MIN	GS	MNM SECT ALT	
											FAF-OM	OM-MM
											3.6 NM	3.3 NM
									420	80	2 : 42	2 : 28
									525	100	2 : 10	1 : 59
									630	120	1 : 48	1 : 39
									735	140	1 : 33	1 : 25
									845	160	1 : 21	1 : 14