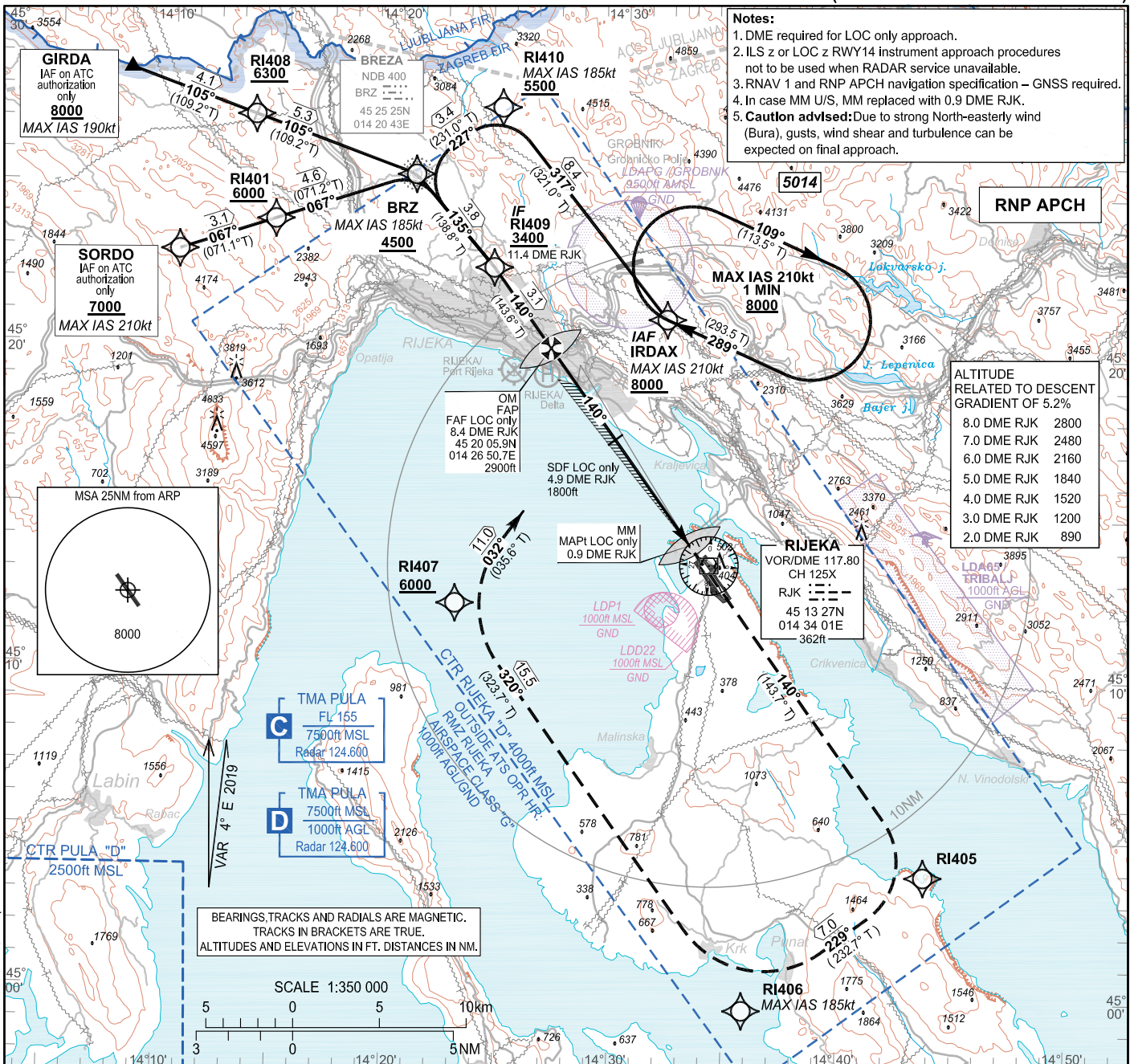


INSTRUMENT APPROACH  
CHART-ICAO

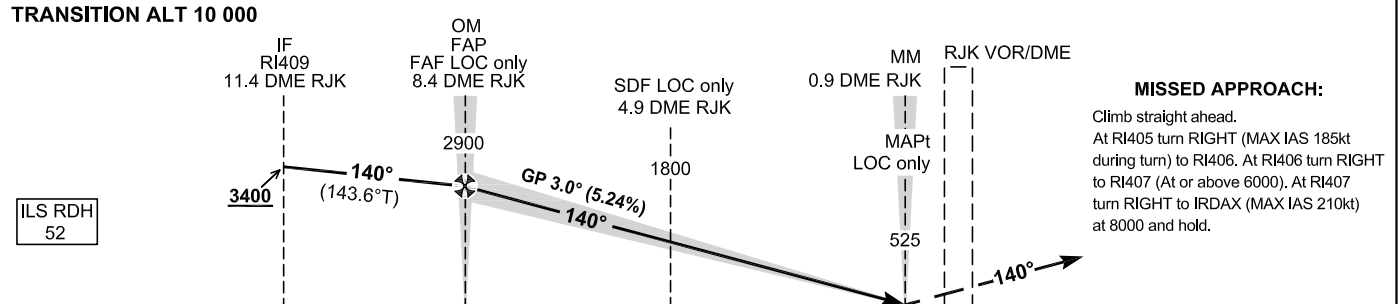
AD ELEV 278  
HEIGHTS RELATED  
TO THR 14 ELEV 264

PULA RADAR 127.675  
RIJEKA TOWER 124.600  
RIJEKA TOWER 119.000

RIJEKA / Krk I. (LDRI)  
ILS z or LOC z RWY 14  
(RNP APCH to ILS or LOC transition)



CHANGE: Glider activity zones LDA11 and LDA12 / ISTRAZONA 1 and LDA12 / ISTRAZONA 2 deleted; Heliport RIJEKA/Delta added.



OCA(H)		A	B	C	D
Straight-in Approach	ILS CAT I press. altim.	460 (196)	471 (207)	484 (220)	498 (234)
	LOC only	590 (330)			
Circling		800 (530)	Circling for ACFT CAT A, SW of the aerodrome not allowed. Circling for ACFT CAT B, C and D not allowed.		

LOC only: FAF to MAPt distance - 7.5 NM Timing not authorized for defining the MAPt						
GS (kt)	80	100	120	140	160	180
min:sec	5:37	4:30	3:45	3:13	2:49	2:30
Rate of descent (ft / min)	425	531	637	743	850	956

RIJEKA / Krk I. (LDRI)

ILS z or LOC z RWY 14  
(RNP APCH to ILS or LOC transition)

ILS z or LOC z RWY14													
Proposed tabular description for navigation database coding - APPROACH TRANSITION													
Serial Number	Fix	Path descriptor	Waypoint name	Flyover	Course	Magnetic Variation	Distance (NM)	Turn direction	Altitude (ft)	Speed (kt)	VPA/TCH (°/ft)	Remarks	NAV SPEC
					°M (°T)								
010	IAF	IF	SORDO	-	-	4°E	-	-	+7000	-210	-	IAF on ATC authorization only	RNP APCH
020	-	TF	RI401	-	067° (071.1° T)	4°E	3.1	-	+6000	-	-	-	
030	-	TF	BRZ	-	067° (071.2° T)	4°E	4.6	-	+4500	-185	-	-	
040	IF	TF	RI409	-	135° (138.8° T)	4°E	3.8	-	+3400	-	-	-	
010	IAF	IF	GIRDA	-	-	4°E	-	-	+8000	-190	-	IAF on ATC authorization only	RNP APCH
020	-	TF	RI408	-	105° (109.2° T)	4°E	4.1	-	+6300	-	-	-	
030	-	TF	BRZ	-	105° (109.2° T)	4°E	5.3	-	+4500	-185	-	-	
040	IF	TF	RI409	-	135° (138.8° T)	4°E	3.8	-	+3400	-	-	-	
010	IAF	IF	IRDAX	-	-	4°E	-	-	+8000	-210	-	-	RNP APCH
020	-	TF	RI410	-	317° (321.0° T)	4°E	8.4	-	+5500	-185	-	-	
030	-	TF	BRZ	-	227° (231.0° T)	4°E	3.4	L	+4500	-	-	-	
040	IF	TF	RI409	-	135° (138.8° T)	4°E	3.8	L	+3400	-	-	-	
AERONAUTICAL DATABASE REQUIREMENTS													
Conventional procedure essential fixes/points													
ILS z or LOC z RWY 14													
LOC only - final approach descent angle: 2.99°													
Fix identification		Coordinates			True bearing or ARC distance providing track			True bearing or distance providing intersection					
IF (RI409)		45 22 34.4N 014 24 15.3E			-			-					
FAF LOC only		45 20 05.9N 014 26 50.7E			143.68° (IKR LOC)			8.36 DME RJK					
SDF LOC only		45 17 17.9N 014 29 46.2E			143.68° (IKR LOC)			4.88 DME RJK					
MAPt LOC only (MM 14)		45 14 03.80N 014 33 08.47E			143.68° (IKR LOC)			0.87 DME RJK					
ILS z or LOC z RWY14													
Proposed tabular description for navigation database coding - FINAL TRANSITION (MISSED APPROACH)													
Serial Number	Fix	Path descriptor	Waypoint name	Flyover	Course	Magnetic Variation	Distance (NM)	Turn direction	Altitude (ft)	Speed (kt)	VPA/TCH (°/ft)	Remarks	NAV SPEC
					°M (°T)								
010	-	IF	RI405	-	140° (143.7° T)	4°E	-	-	-	-	-	-	RNP APCH
020	-	TF	RI406	-	229° (232.7° T)	4°E	7.0	R	-	-185	-	-	
030	-	TF	RI407	-	320° (323.7° T)	4°E	15.5	R	+6000	-	-	-	
040	MAHF	TF	IRDAX	-	032° (035.6° T)	4°E	11.0	-	8000	-210	-	-	
050	MAHF	HM	IRDAX	-	289° (293.5° T)	4°E	1MIN	R	8000	-210	-	Holding above 8000ft on ATC clearance only	RNAV 1

CHANGE: Glider activity zones LDA11 / ISTRZA ZONA 1 and LDA12 / ISTRZA ZONA 2 deleted; Heliport RIJEKA/Delta added.

RJJEKA / Krk I. (LDRI)

ILS z or LOC z RWY 14  
(RNP APCH to ILS or LOC transition)

RNAV HOLDING tabular description

Waypoint name	Path Terminator	Inbound course °M (°T)	Leg time/distance NM	Turn direction	Minimum altitude FT	Maximum altitude FT	Speed limit MAX IAS (kt)	Magnetic Variation	Remarks	NAV SPEC
IRDAX	HM	289°	1MIN /	R	8000	-	210	4°E	-	RNAV 1
		(293.5° T)	-							

Waypoint Coordinates

Waypoint Name	WGS-84 Latitude	WGS-84 Longitude
GIRDA	452832N	0140802E
IRDAX	452103.8N	0143157.0E
SORDO	452255.7N	0141021.7E
BRZ	452525.14N	0142043.44E
RI401	452356.5N	0141434.0E
RI405	450351.7N	0144342.9E
RI406	445937.0N	0143552.0E
RI407	451207.2N	0142251.9E
RI408	452710.5N	0141335.3E
RI409	452234.4N	0142415.3E
RI410	452733.4N	0142428.0E

CHANGE: Glider activity zones LDA11 / ISTRZONA 1 and LDA12 / ISTRZONA 2 deleted; Heliport RJJEKA/Delta added.

OVA STRANICA JE NAMJERNO OSTAVLJENA PRAZNA  
THIS PAGE INTENTIONALLY LEFT BLANK