

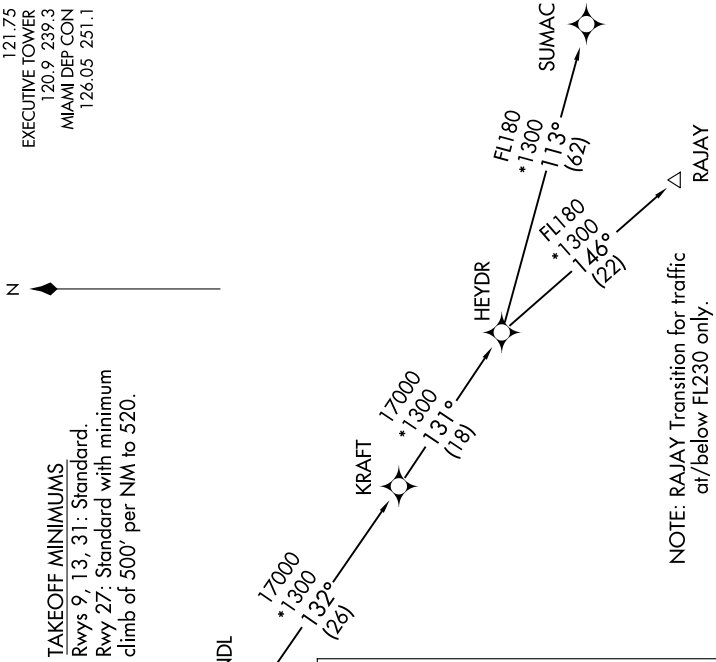
# GABOW TWO DEPARTURE (RNAV)

SE-3, 20 MAR 2025 to 17 APR 2025

**TOP ALTITUDE:  
ASSIGNED BY ATC**

RNAV 1 - DME/DME/IRU or GPS.  
From KRAFT - GPS.  
RADAR required.

ATIS 119.85  
CLNC DEL 127.95  
GND CON 121.75  
EXECUTIVE TOWER 120.9 239.3  
MIAMI DEP CON 126.05 251.1



MINUDO 4000

GABOW 1300  
\*1300  
122° (13)  
127° (18)

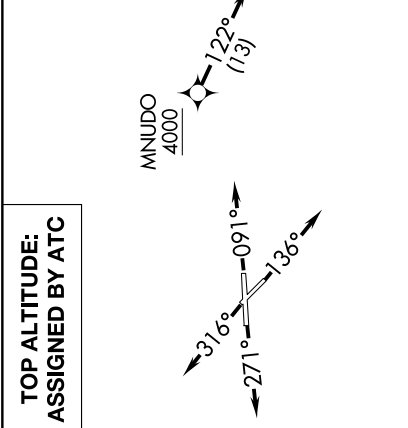
SANDL 1700  
\*1300  
132° (26)

KRAFT 1700  
\*1300  
131° (18)

HEYDR 1300  
\*1300  
113° (62)  
136° (22)

SUMAC

RAJAY



**DEPARTURE ROUTE DESCRIPTION**

TAKEOFF RUNWAY 9: Climb on heading 091° or as assigned by ATC for vectors to cross MNUDO at or above 4000, thence. . . .

TAKEOFF RUNWAY 13: Climb on heading 136° or as assigned by ATC for vectors to cross MNUDO at or above 4000, thence. . . .

TAKEOFF RUNWAY 27: Climb on heading 271° or as assigned by ATC for vectors to cross MNUDO at or above 4000, thence. . . .

TAKEOFF RUNWAY 31: Climb on heading 316° or as assigned by ATC for vectors to cross MNUDO at or above 4000, thence. . . .

. . . on track 122° to GABOW, (transition). Maintain ATC assigned altitude. Expect clearance to filed altitude ten minutes after departure.

RAJAY TRANSITION (GABOW2.RAJAY)  
SANDL TRANSITION (GABOW2.SANDL)  
SUMAC TRANSITION (GABOW2.SUMAC)

NOTE: Chart not to scale.

SE-3, 20 MAR 2025 to 17 APR 2025

# GABOW TWO DEPARTURE (RNAV)