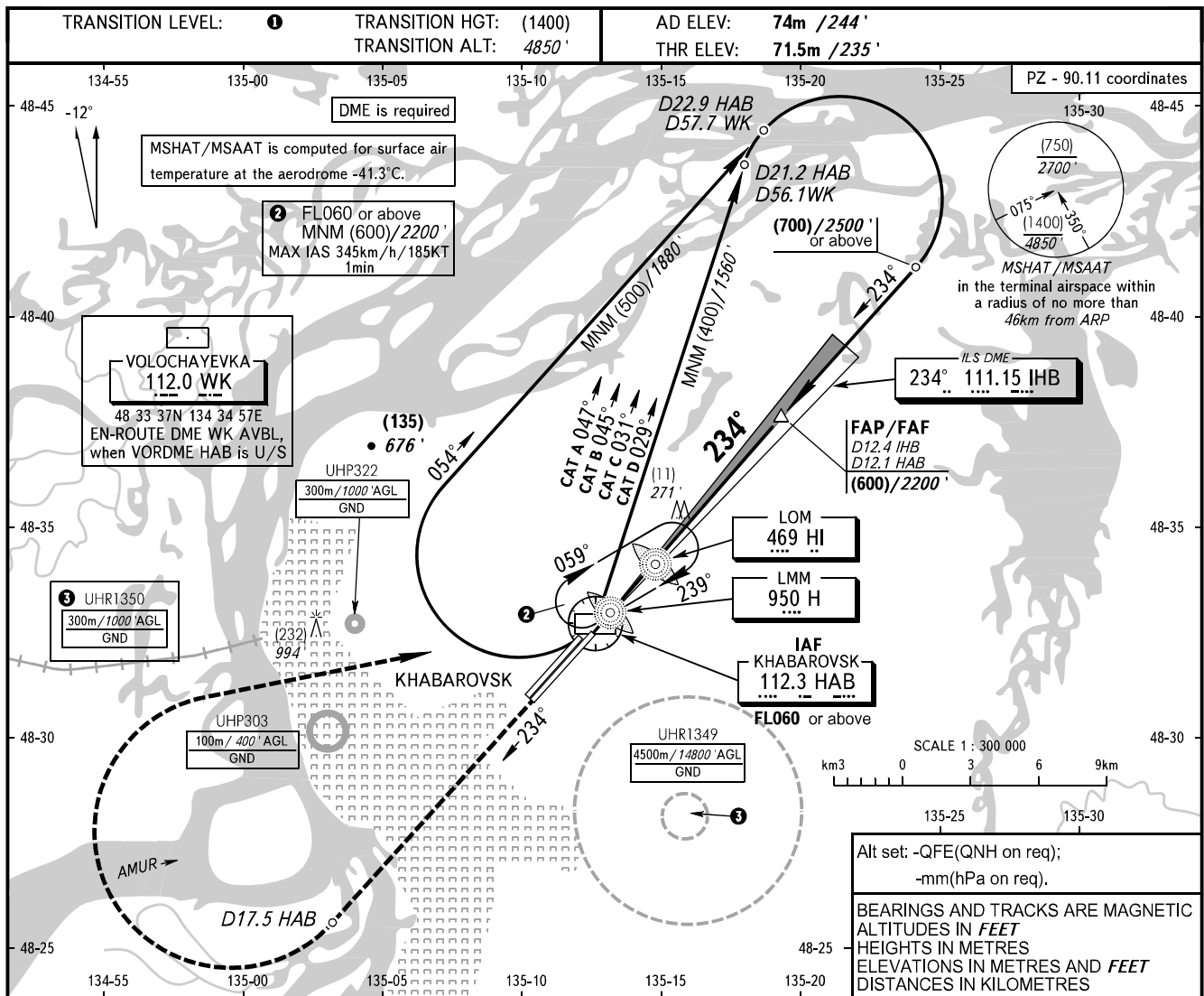


**INSTRUMENT
APPROACH
CHART - ICAO**

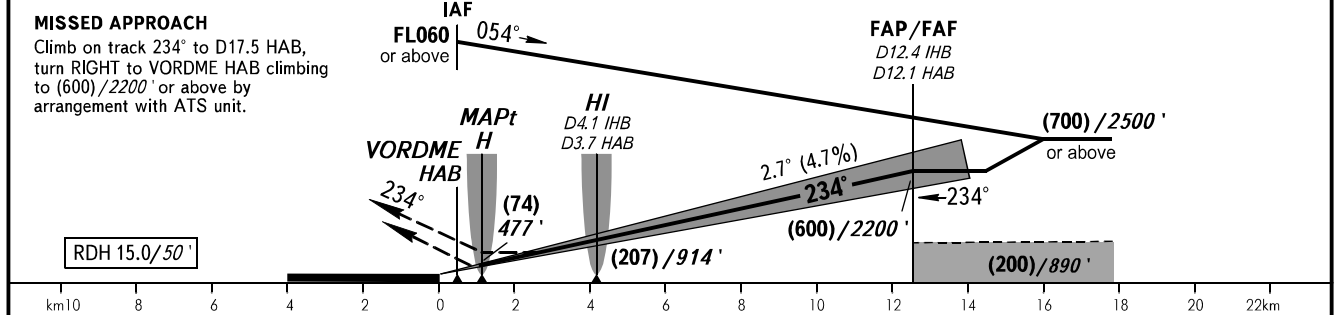
APPROACH	125.200
RADAR	120.300
PRECISION	119.300
GROUND	121.800 By ATC

**KHABAROVSK, RUSSIA
NOVY
ILS X CAT I, LOC X RWY 23L**



Alt set: -QFE(QNH on req);
-mm(hPa on req).
BEARINGS AND TRACKS ARE MAGNETIC
ALTITUDES IN FEET
HEIGHTS IN METRES
ELEVATIONS IN METRES AND FEET
DISTANCES IN KILOMETRES

DME IHB	2.0	4.0	6.0	8.0	10.0	12.0
HEIGHT/ALTITUDE	(110)/590'	(205)/900'	(300)/1210'	(395)/1520'	(485)/1830'	(580)/2140'



OCA(H)		A	B	C	D
Straight-in Approach	CAT I	132(60) 433'	132(60) 433'	132(60) 433'	132(60) 433'
	LOC	165(95) 540'	165(95) 540'	165(95) 540'	165(95) 540'

1 TRANSITION LEVEL:
- FL060 when QFE is 753mm mercury column (1004 hPa) or above;
- FL070 when QFE is less than 753mm mercury column (1004 hPa).
NOTE:
1. MAPt at LMM H. Timing not authorized for defining MAPt.
2. Zero range of DME IHB is indicated at RWY 23L THR.
3. Visual manoeuvring is PROHIBITED.

GROUND SPEED	km/h	150	180	210	240	270	300	330	360	390
	kt	81	97	113	130	146	162	178	194	211
RATE OF DESCENT	m/s	2.0	2.4	2.7	3.1	3.5	3.9	4.3	4.7	5.1
	ft/min	385	463	540	617	694	771	848	925	1002