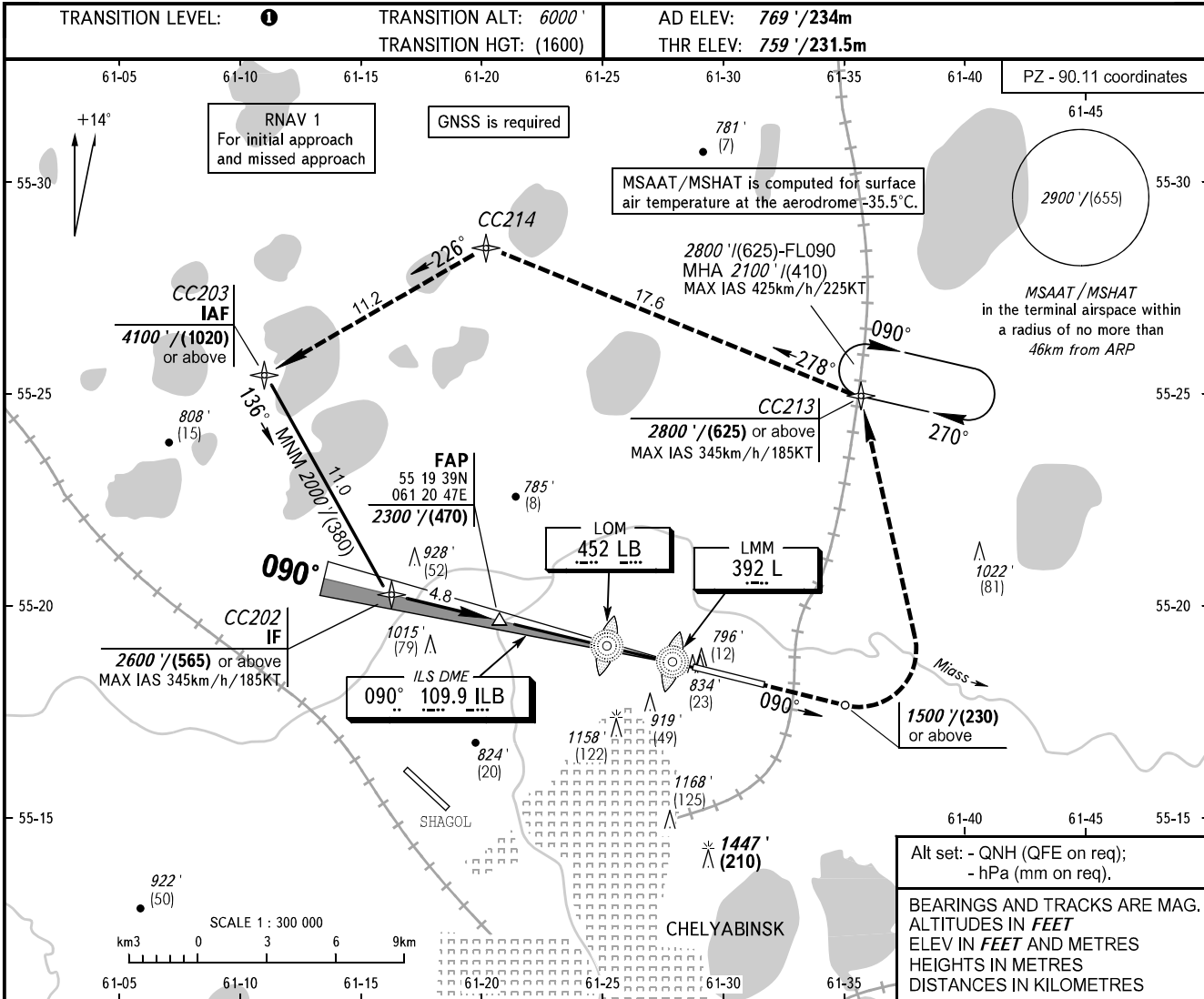


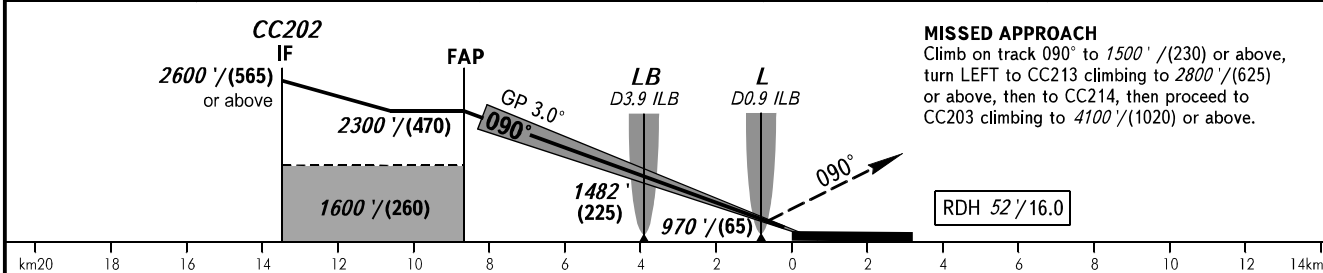
**INSTRUMENT
APPROACH
CHART - ICAO**

**CHELYABINSK, RUSSIA
BALANDINO
ILS Z CAT I RWY 09**

RADAR 133.200
START 125.200



DME ILB	8.0	6.0	4.0	2.0
ALTITUDE/HEIGHT	2187' / (436)	1843' / (331)	1499' / (226)	1155' / (121)



OCA(H)		A	B	C	D				
Straight-in Approach	CAT I	959' (200') (61)	959' (200') (61)	959' (200') (61)	959' (200') (61)				
Circling		1220' (450') (140)	1460' (690') (210)	1640' (870') (265)	1900' (1140') (345)				
GROUND SPEED	km/h	150	180	210	240	270	300	330	360
	kt	81	97	113	130	146	162	178	194
RATE OF DESCENT	m/s	2.2	2.6	3.0	3.5	3.9	4.3	4.8	5.2
	ft/min	427	512	597	682	768	853	938	1024

TRANSITION LEVEL:
- FL070 when QNH is 1013 hPa (760mm mercury column) or above;
- FL080 when QNH is 977 hPa (733mm mercury column) or above, but less than 1013 hPa (760mm mercury column);
- FL090 when QNH is less than 977 hPa (733mm mercury column).

WARNING
DME ILB reads zero at RWY 09 THR.

CHANGE: New chart