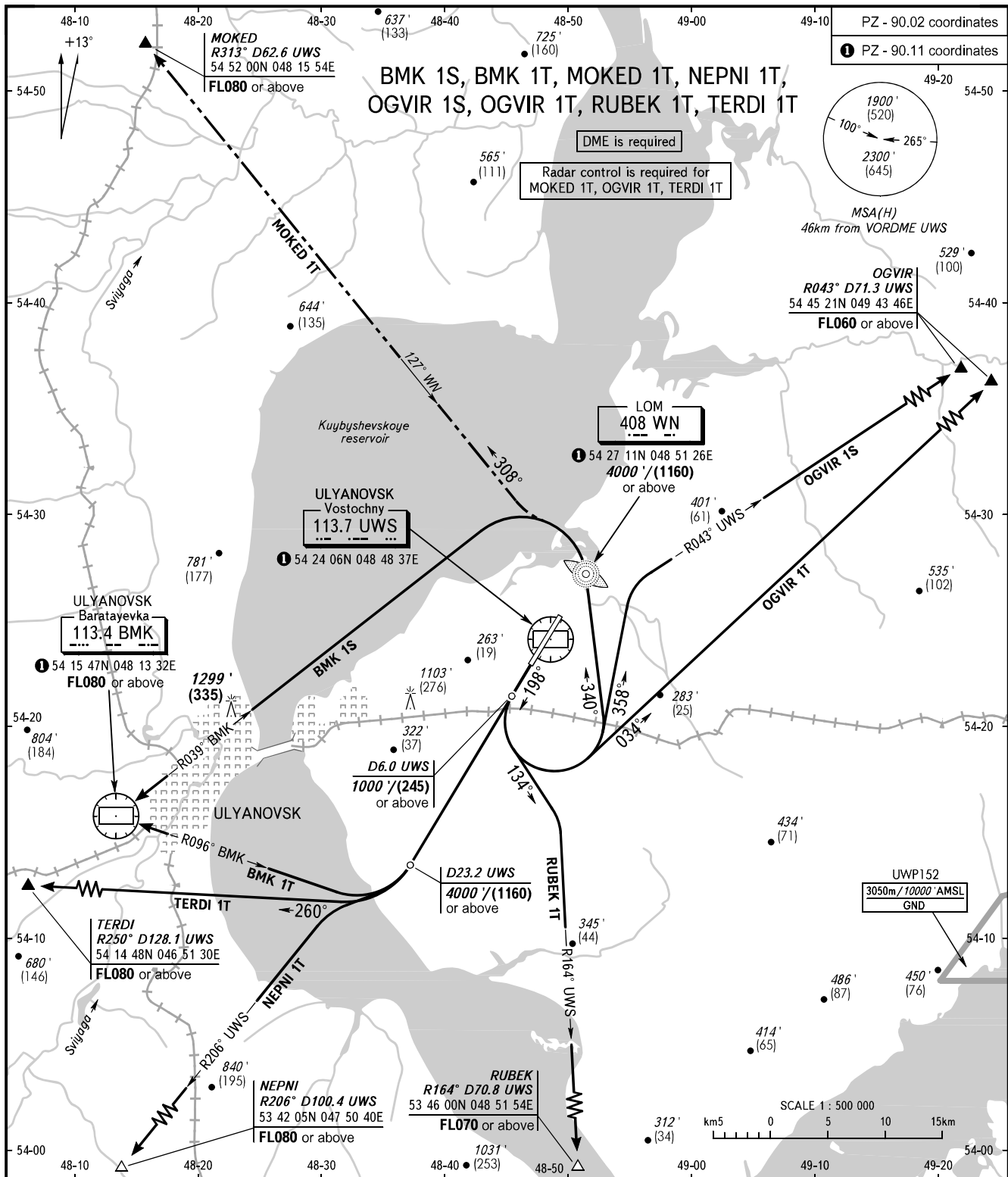


STANDARD DEPARTURE CHART  
INSTRUMENT (SID) - ICAO

TRANSITION ALT: **4000'**  
TRANSITION HGT: **(1200)**

ULYANOVSK, RUSSIA  
VOSTOCHNY  
RWY 20



VOSTOCHNY TOWER **124.200**

MINIMUM CLIMB GRADIENTS:  
**BMK 1S:** 5.6% up to FL070;  
**TERDI 1T:** 5.6% up to 4000'/(1160).

BEARINGS AND TRACKS ARE MAGNETIC  
ALTITUDES IN **FEET**  
ELEVATIONS IN **FEET** AND METRES  
HEIGHTS IN METRES  
DISTANCES IN KILOMETRES

Alt set: - QNH (QFE on req);  
- hPa (mm on req).