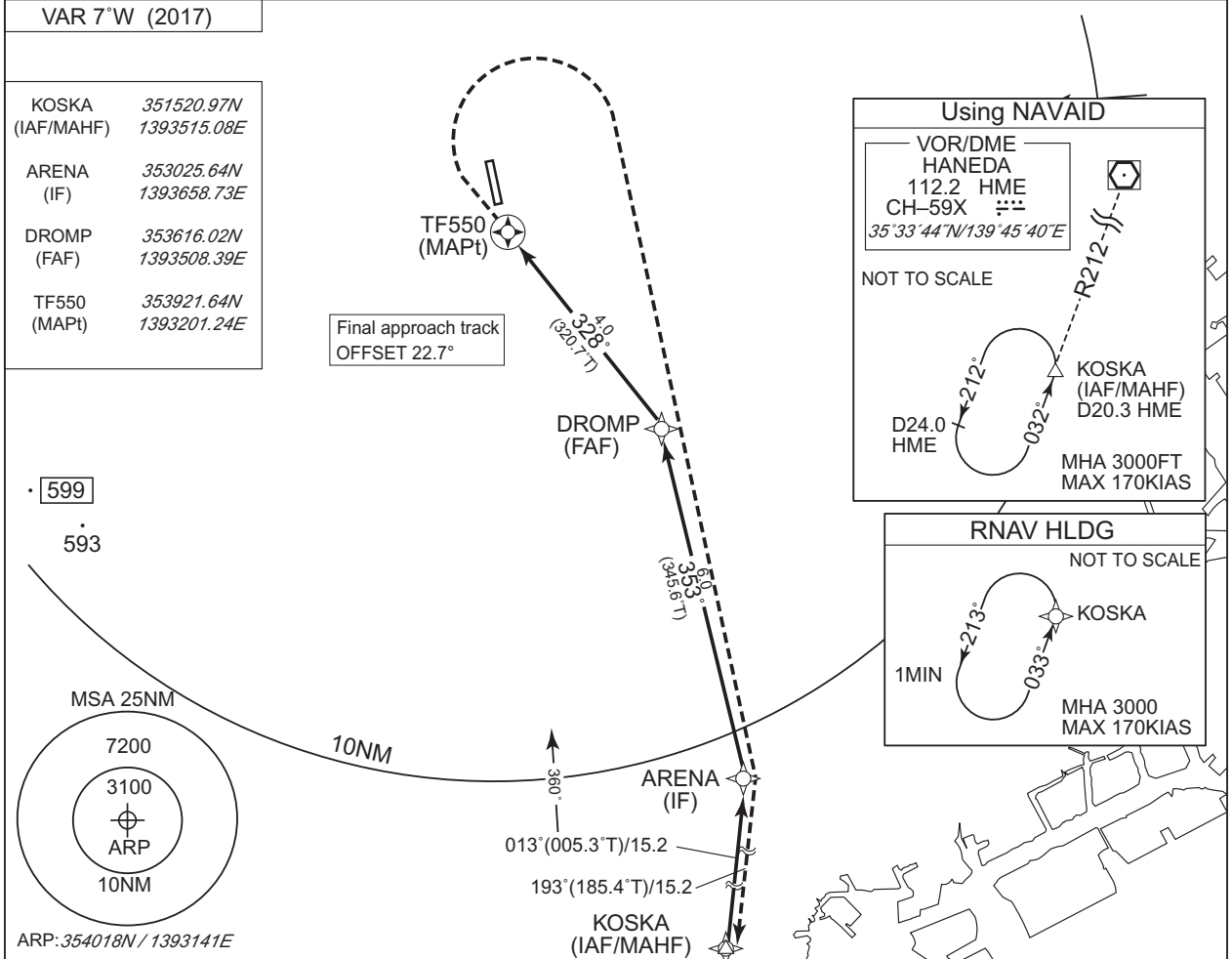


INSTRUMENT APPROACH CHART

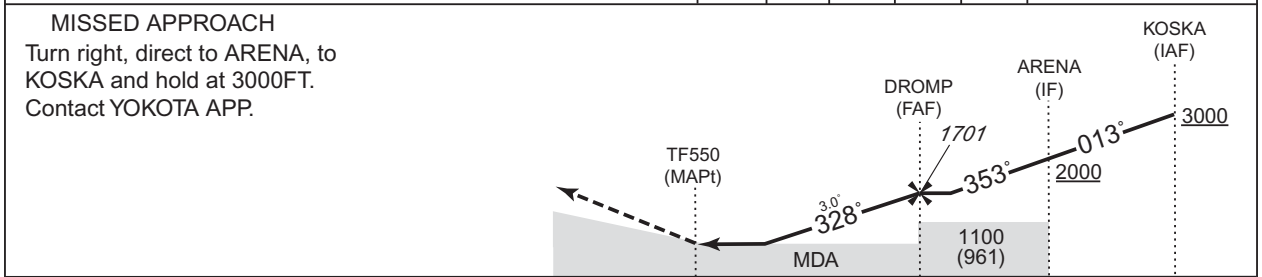
RJTF / CHOFU

RNP RWY35

YOKOTA APP 118.3 – 270.6	RNP APCH	—	NO RADAR
-----------------------------	----------	---	----------



MAPt	1	2	3	FAF	NM to Next Fix
—	746	1064	1383	1701	ALT (3.0° APCH Path)



MISSED APCH climb gradient MNM 3.0%

MINIMA		THR elev.137		AD elev.139		
CAT	LNAV/VNAV		LNAV		CIRCLING	
	DA(H)	CMV	MDA(H)	CMV	MDA(H)	VIS
A	—	—	670 (531)	1500	690 (551)	1600
B					720 (581)	
C	—	—	—	—	—	—
D	—	—	—	—	—	—

MINIMA with Missed APCH climb gradient of 2.5% are not established. Circling to EAST side of RWY only.

CHANGE:PROC renamed. Requirement for RNP.

INTENTIONALLY LEFT BLANK