

LOC I-ILN 110.7	APP CRS 224°	Rwy Idg 10701
		TDZE 1077
		Apt Elev 1077

ILS or LOC RWY 22R

WILMINGTON AIR PARK (ILN)

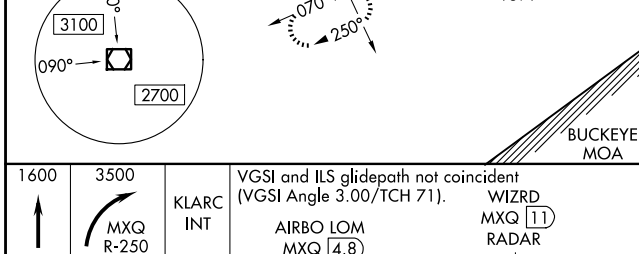
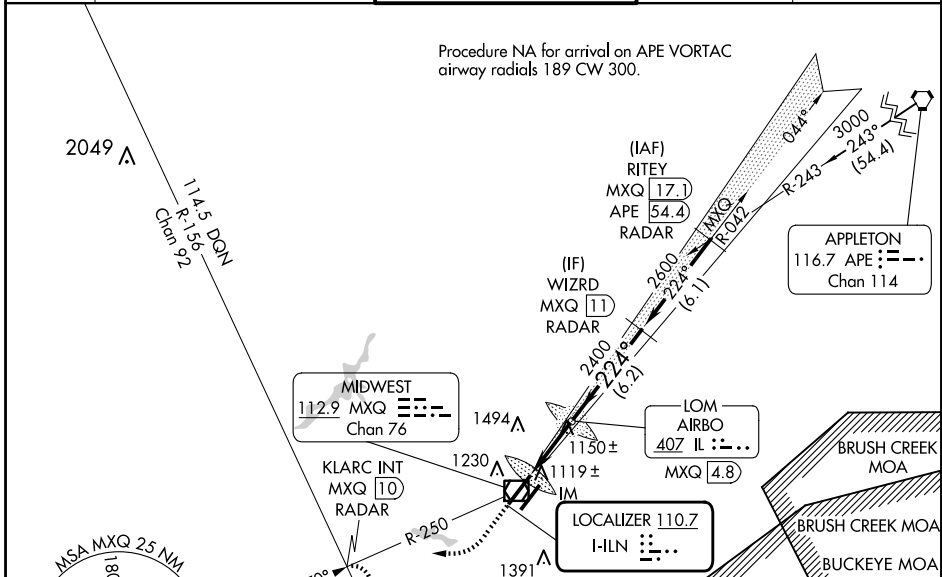
DME or RADAR required for procedure entry.
ADF or DME required for LOC only.

ALSF-2

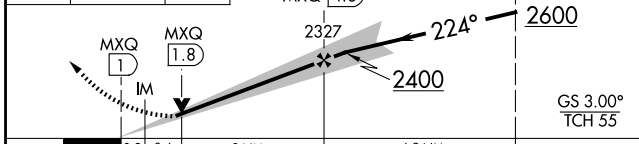
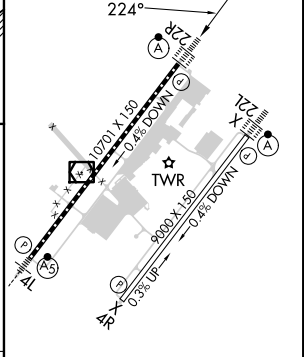
MISSED APPROACH: Climb to 1600 then climbing right turn to 3500 on MXQ VOR/DME R-250 to KLARC INT/MXQ 10 DME/RADAR and hold, continue climb-in-hold to 3500.

Simultaneous approach authorized. DME from MXQ VOR/DME.
DME use requires simultaneous reception of I-ILN and MXQ DME.

D-ATIS 124.925	COLUMBUS APP CON 118.85 269.275	WILMINGTON TOWER 119.475	GND CON 121.6	CLNC DEL 128.85
--------------------------	-------------------------------------------	------------------------------------	-------------------------	---------------------------



ELEV 1077	TDZE 1077
-----------	-----------



CATEGORY	A	B	C	D	TDZ/CL Rwy 22L and 22R HIRL Rwy 4L-22R and 4R-22L FAF to MAP 3.8 NM Knots: 60 90 120 150 180 Min:Sec: 3:48 2:32 1:54 1:31 1:16
S-ILS 22R	1277/18 200 (200-½)				
S-LOC 22R	1400/24	323 (400-½)	1400/26	323 (400-½)	
CIRCLING	1560-1	483 (500-1)	1860-2¼ 783 (800-2¼)	1860-2½ 783 (800-2½)	

EC-2, 20 MAR 2025 to 17 APR 2025

EC-2, 20 MAR 2025 to 17 APR 2025