

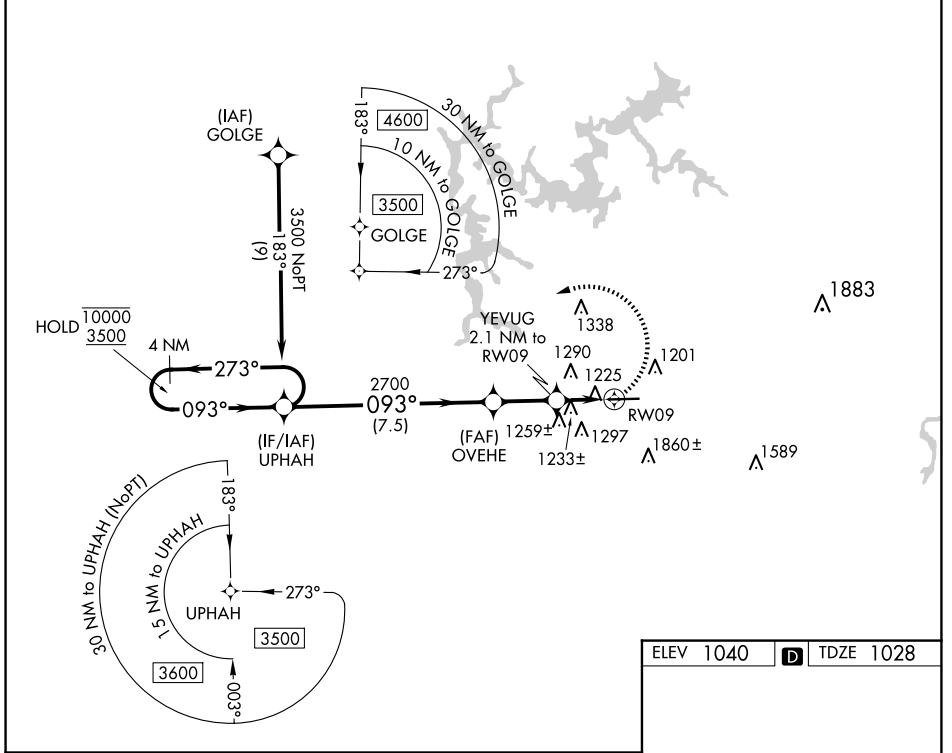
WAAS CH 61144 W09A	APP CRS 093°	Rwy ldg TDZE Apt Elev	5233 1028 1040
--	------------------------	-----------------------------	---

RNAV (GPS) RWY 9

COBB COUNTY INTL/MCCOLLUM FLD (RYY)

RNP APCH-GPS.		MISSED APPROACH: Climbing left turn to 3500 direct UPHAH and hold.			
▼ ▲ Rwy 9 helicopter visibility reduction below 1 SM NA.					

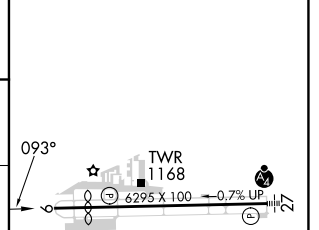
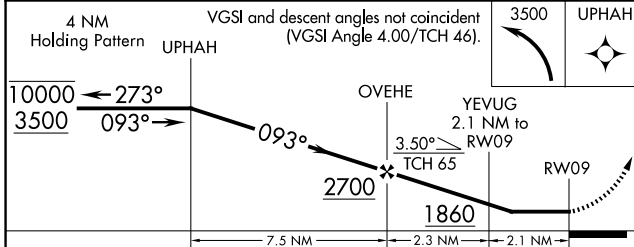
ATIS 128.125	ATLANTA APP CON 121.0 268.7	MCCOLLUM TOWER ★ 125.9 (CTAF) 0	GND CON 119.0	CLNC DEL 119.0	CLNC DEL 121.0 268.7 (When twr closed)	UNICOM 122.7
------------------------	---------------------------------------	---	-------------------------	--------------------------	---	------------------------



SE-4, 20 MAR 2025 to 17 APR 2025

SE-4, 20 MAR 2025 to 17 APR 2025

ELEV 1040	TDZE 1028
-----------	-----------



CATEGORY	A	B	C	D
LP MDA	1480-1	452 (500-1)	1480-1 $\frac{3}{8}$	452 (500-1 $\frac{3}{8}$)
LNAV MDA	1500-1	472 (500-1)	1500-1 $\frac{3}{8}$	472 (500-1 $\frac{3}{8}$)
CIRCLING	1800-1	760 (800-1)	2180-3	1140 (1200-3)

HIRL Rwy 9-27