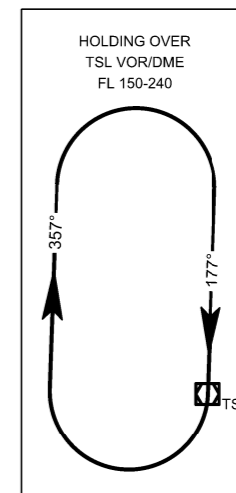
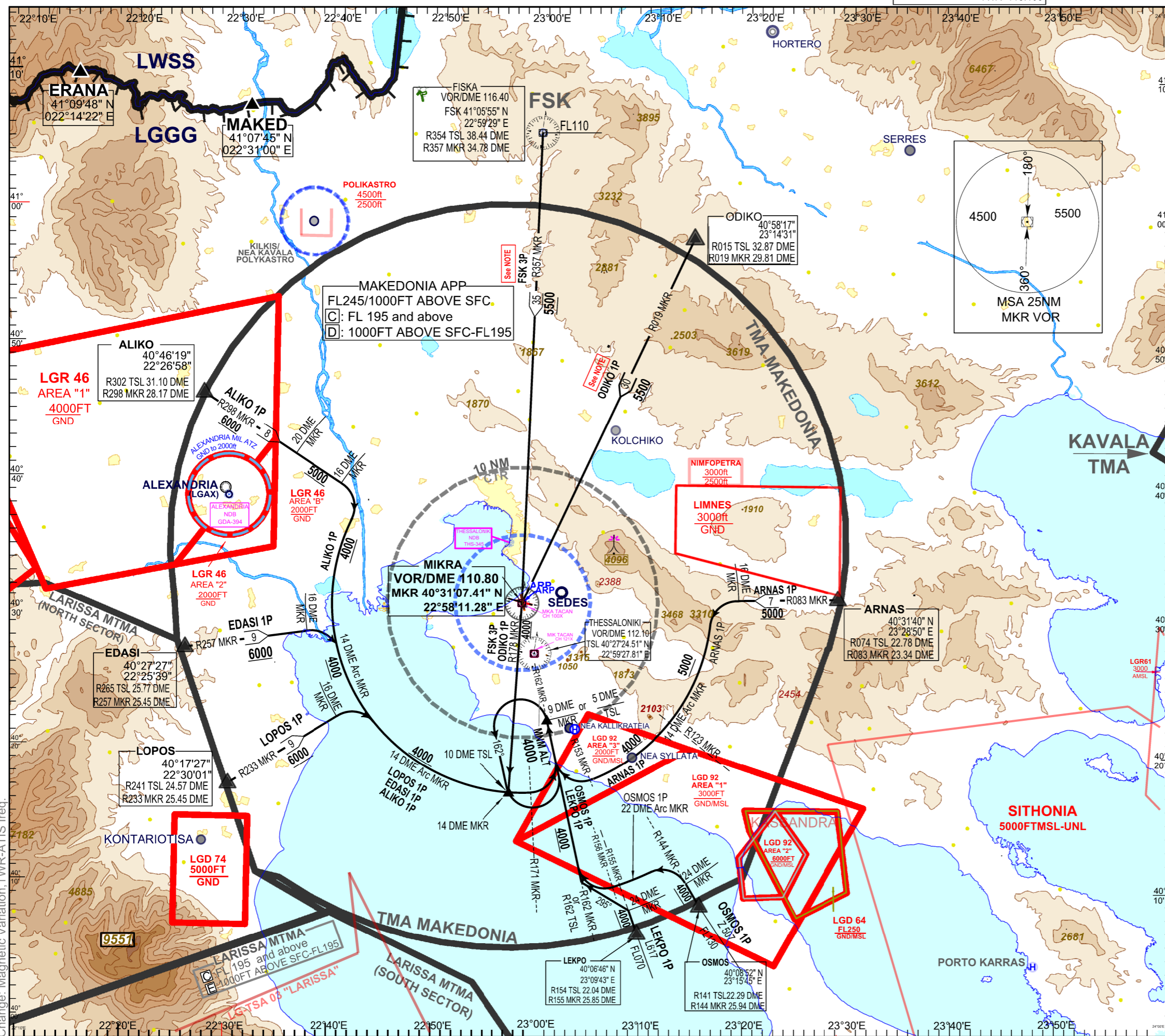


TRANSITION ALT 6000 FT

AERODROME ELEV 22 ft

ATIS 127.555 APP 120.800  
TWR 118.105



ELEVATION, ALTITUDES  
ARE IN FEET  
BEARINGS, TRACKS AND  
RADIALS ARE MAGNETIC  
DISTANCES ARE IN NM  
VAR 5°E/2022 - Annual Change 5'44"



- Length of STAR EDASI 1P (from EDASI to R162 MKR 9 DME Fix): 39NM.
- Length of STAR LOPOS 1P (from LOPOS to R162 MKR 9 DME Fix): 33NM.
- Length of STAR ALIKO 1P (from ALIKO to R162 MKR 9 DME Fix): 51NM.
- Length of STAR ODIKO 1P (from ODIKO to R162 MKR 9 DME Fix): 54NM.
- Length of STAR ARNAS 1P (from ARNAS to R162 MKR 9 DME Fix): 32NM.
- Length of STAR OSMOS 1P (from OSMOS to R162 MKR 9 DME Fix): 22NM.
- Length of STAR LEKPO 1P (from LEKPO to R162 MKR 9 DME Fix): 18NM.
- Length of STAR FSK 3P (from FSK to R162 MKR 9 DME Fix): 59NM.

**NOTE**  
**Executing STARs FSK, 3P ODIKO 1P:**  
After passing MKR VOR/DME intercept R178 MKR.  
At 14 DME MKR turn left (Max IAS 230 kt, Bank Angle 25°)  
and enter the holding.



Change: Magnetic Variation, TWR-ATIS freq.