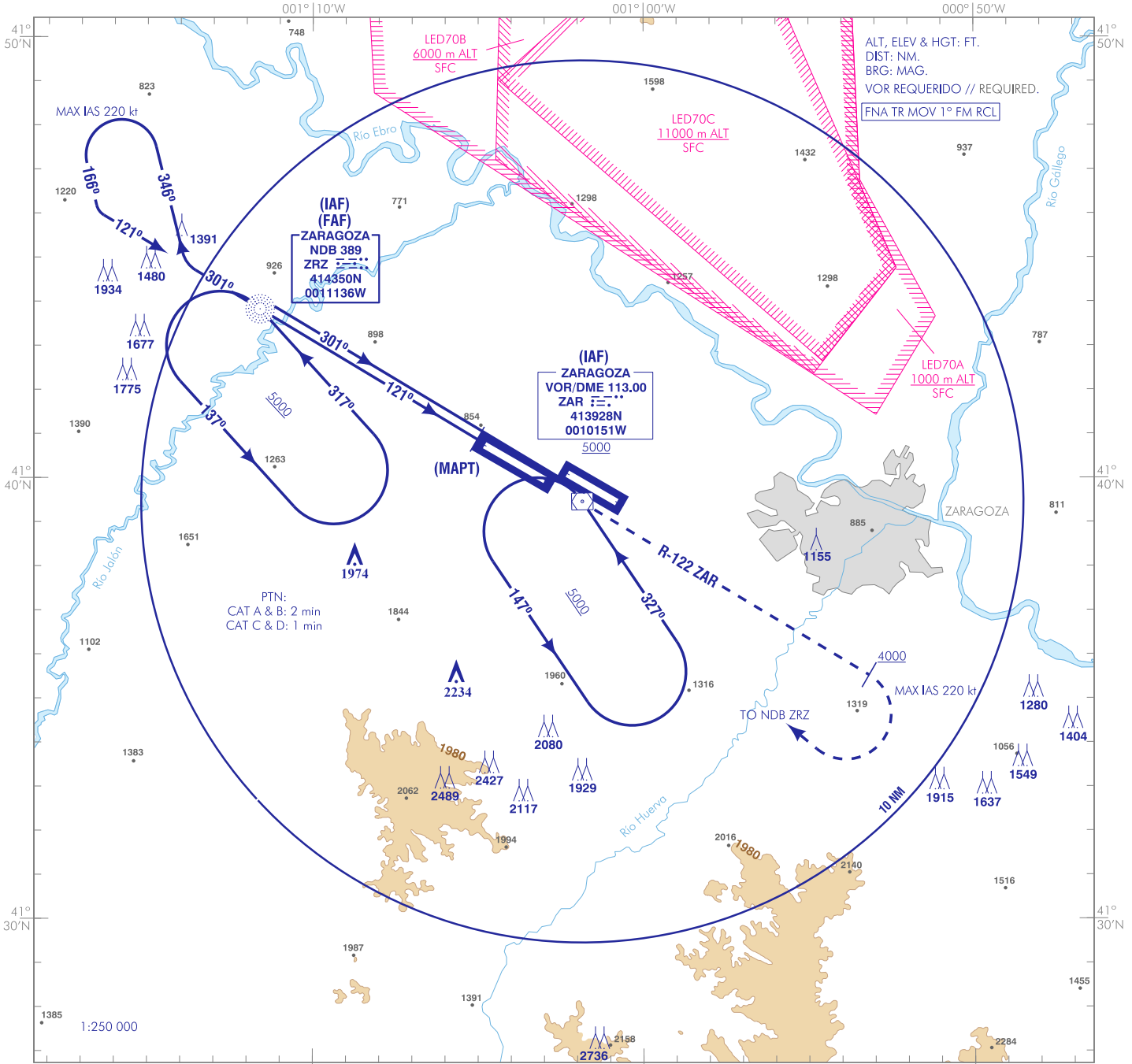


CARTA DE APROXIMACIÓN  
POR INSTRUMENTOS-OACI

ELEV AD  
862  
VAR 0° (2020)

APP 119.305 C  
296.750 MHz  
TWR 122.105 C  
292.200 MHz  
GCA 130.025 MHz

ZARAGOZA  
NDB Z  
RWY 12R



**FRUSTRADA:** SUBIR DIRECTO AL VOR/DME ZAR. PROCEDER POR EL R-122 ZAR ASCIENDIENDO A 4000 . VIRAR A LA DERECHA (IAS MAX 220 kt) DIRECTO AL NDB ZRZ ASCIENDIENDO A 5000 PARA INTEGRARSE A LA ESPERA.

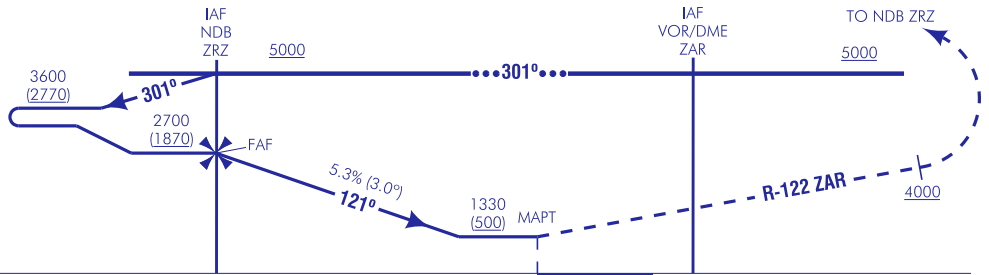
**MISSED APCH:** STRAIGHT AHEAD TO VOR/DME ZAR. PROCEED ON R-122 ZAR CLIMBING TO 4000. TURN RIGHT (MAX IAS 220 kt) DIRECT TO NDB ZRZ CLIMBING TO 5000 AND HOLD.

NOTAS:

- PRECAUCIÓN: A PARTIR DE FL070 EXISTEN INTERFERENCIAS ENTRE LAS ÁREAS DE ESPERA Y LA ZONA LED70.
- NO SE HA CONSIDERADO EL ÁREA TOPE AL DETERMINAR LA ALTITUD MÍNIMA DE ESPERA.

NOTES:

- CAUTION: STARTING FROM FL070 THERE IS INTERFERENCE BETWEEN HOLDING AREAS AND LED70.
- BUFFER AREA NOT CONSIDERED TO ESTABLISH HOLDING MINIMUM ALTITUDE.



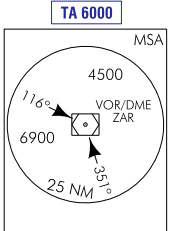
ELEV: 834  
THR RWY 12R

HGT REF ELEV THR RWY 12R

| STA                          | OCA/H | A B C D       |               |                |                |
|------------------------------|-------|---------------|---------------|----------------|----------------|
|                              |       | A             | B             | C              | D              |
|                              | 2.5%  |               | 1330<br>(500) |                |                |
| <b>En círculo(H) sobre</b>   |       |               |               |                |                |
| <b>Circling (H) over 862</b> |       |               |               |                |                |
|                              |       | 1500<br>(640) | 1610<br>(750) | 2370<br>(1510) | 2630<br>(1770) |

| GS                      | kt     | 80   | 100  | 120  | 140  | 160  | 180  |
|-------------------------|--------|------|------|------|------|------|------|
| <b>FAF-THR:</b>         | min:s  |      |      |      |      |      |      |
| <b>FAF-MAPT: 5.8 NM</b> | ft/min | 4:22 | 3:30 | 2:55 | 2:30 | 2:11 | 1:57 |
| <b>ROD: 5.3%</b>        | ft/min | 427  | 534  | 640  | 747  | 854  | 960  |

| ALT/HGT DME ( ) FNA |    |    |    |   |   |   |   |   |   |   |
|---------------------|----|----|----|---|---|---|---|---|---|---|
| 13                  | 12 | 11 | 10 | 9 | 8 | 7 | 6 | 5 | 4 | 3 |
|                     |    |    |    |   |   |   |   |   |   |   |



CAMBIOS: FRECUENCIA TWR. CHANGES: TWR FREQUENCY.

ZARAGOZA AD

REQUISITOS DE LA BASE DE DATOS AERONÁUTICA  
AERONAUTICAL DATABASE REQUIREMENTS

PROCEDIMIENTOS DE APROXIMACIÓN POR INSTRUMENTOS // INSTRUMENT APPROACH PROCEDURES

NDB Z RWY 12R

| PUNTO<br>POINT   | LAT       | LONG       | AZIMUT VERDADERO<br>TRUE BEARING | DISTANCIA DME<br>DME DISTANCE<br>(NM) |
|--|-----------|------------|----------------------------------|---------------------------------------|
| VOR/DME ZAR (IAF)  | 413928.4N | 0010151.1W | -                                | -                                     |
| NDB ZRZ (IAF/FAF)  | 414349.9N | 0011136.0W | -                                | -                                     |
| MAPT   | 414048.7N | 0010456.5W | -                                | THR 12R                               |
| Aproximación final de no precisión - Pendiente (Ángulo de descenso) //<br>Non-precision final approach - Slope (Descent angle) |           |            |                                  | 5.27% (3.02°)                         |