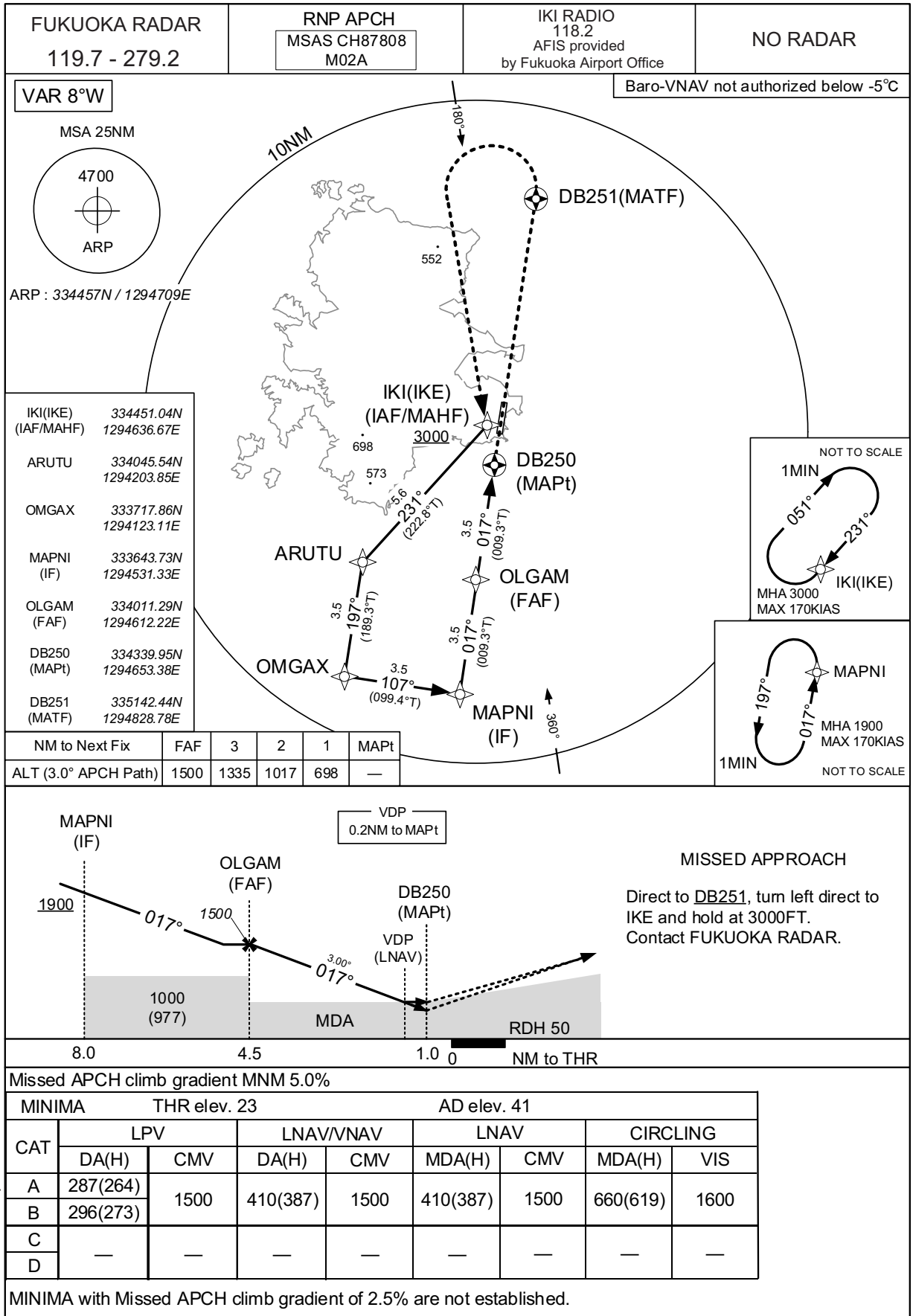


INSTRUMENT APPROACH CHART

RJDB / IKI

RNP RWY02



INSTRUMENT APPROACH CHART

RJDB / IKI

RNP RWY02

**FAS DATA BLOCK**

|                                  |               |                            |               |
|----------------------------------|---------------|----------------------------|---------------|
| Operation type                   | 0             | LTP/FTP ellipsoidal height | +00382        |
| SBAS service provider identifier | 2             | FPAP latitude              | 334531.5680N  |
| Airport identifier               | RJDB          | FPAP longitude             | 1294715.4170E |
| Runway                           | 02            | Threshold crossing height  | 00015.0       |
| Approach performance designator  | 0             | TCH units selector         | 1             |
| Route indicator                  |               | Glide path angle           | 03.00         |
| Reference path data selector     | 0             | Course width at threshold  | 105.00        |
| Reference path ID                | M02A          | ∠ length offset            | 0496          |
| LTP/FTP latitude                 | 334437.2865N  | HAL                        | 40.0          |
| LTP/FTP longitude                | 1294704.7065E | VAL                        | 50.0          |
| CRC remainder                    | 5C72DF61      |                            |               |

**Required additional data**

|                            |     |
|----------------------------|-----|
| LTP/FTP orthometric height | 6.7 |
|----------------------------|-----|

CHANGE : Description of FAS DATA BLOCK ITEM(CRC remainder).