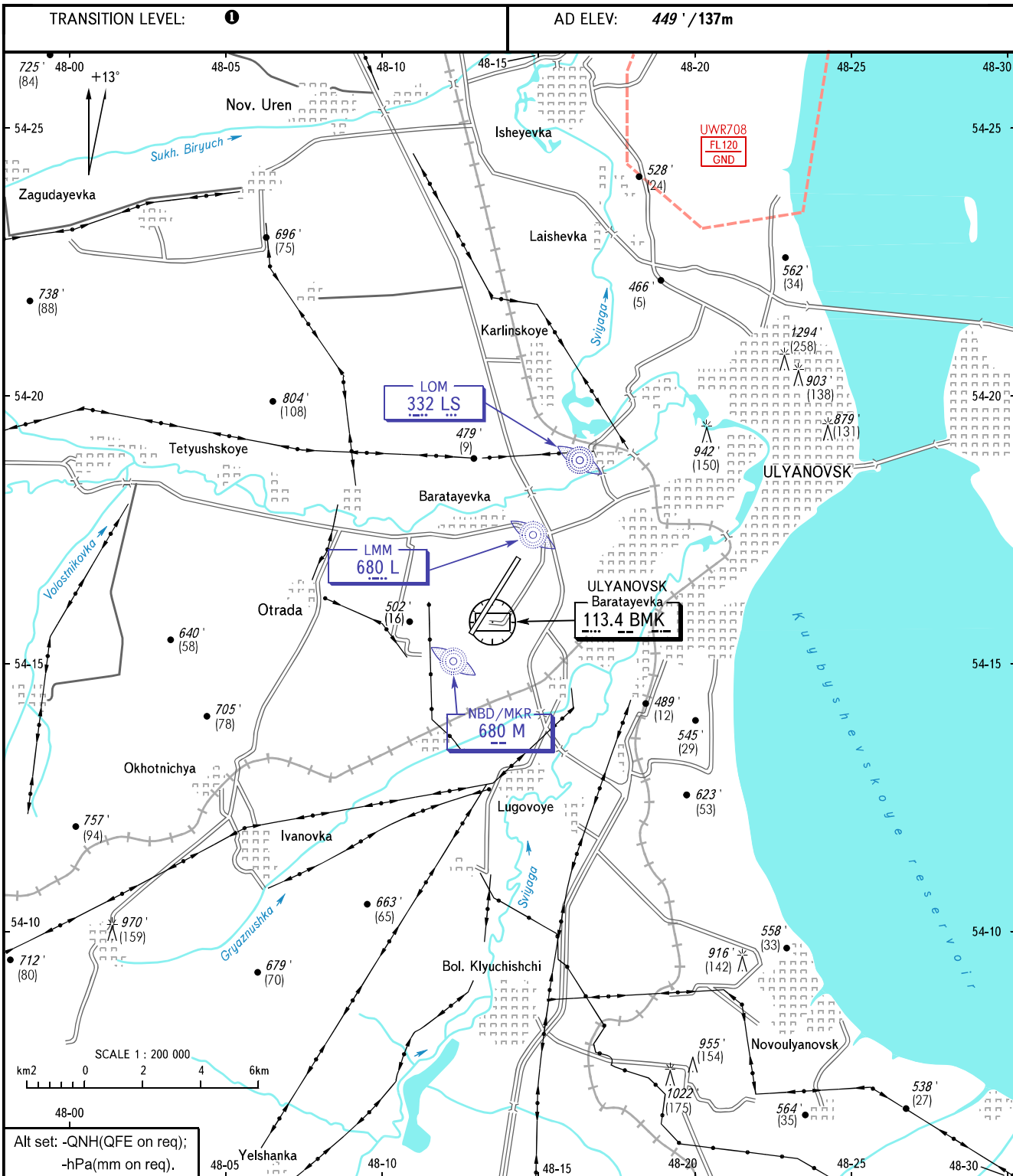


VISUAL
APPROACH
CHART - ICAO

RADAR PRECISION	120.800
PRECISION	120.400

ULYANOVSK, RUSSIA
BARATAYEVKA
RWY 02/20



- 1** TRANSITION LEVEL:
- FL050 when QNH is 1013 hPa (760mm mercury column) or above;
 - FL060 when QNH is 977 hPa (733mm mercury column) or above, but less than 1013 hPa (760mm mercury column);
 - FL070 when QNH is less than 977 hPa (733mm mercury column).

CHANGE: New chart