

VOR RWY 17

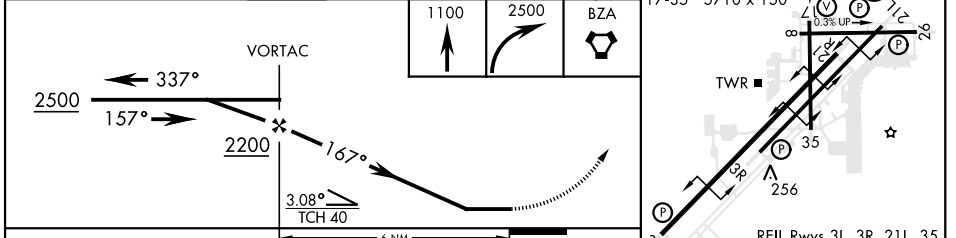
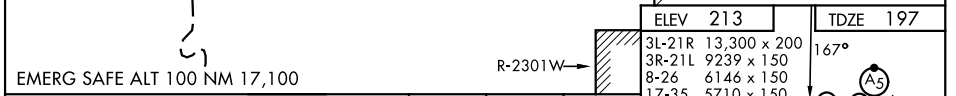
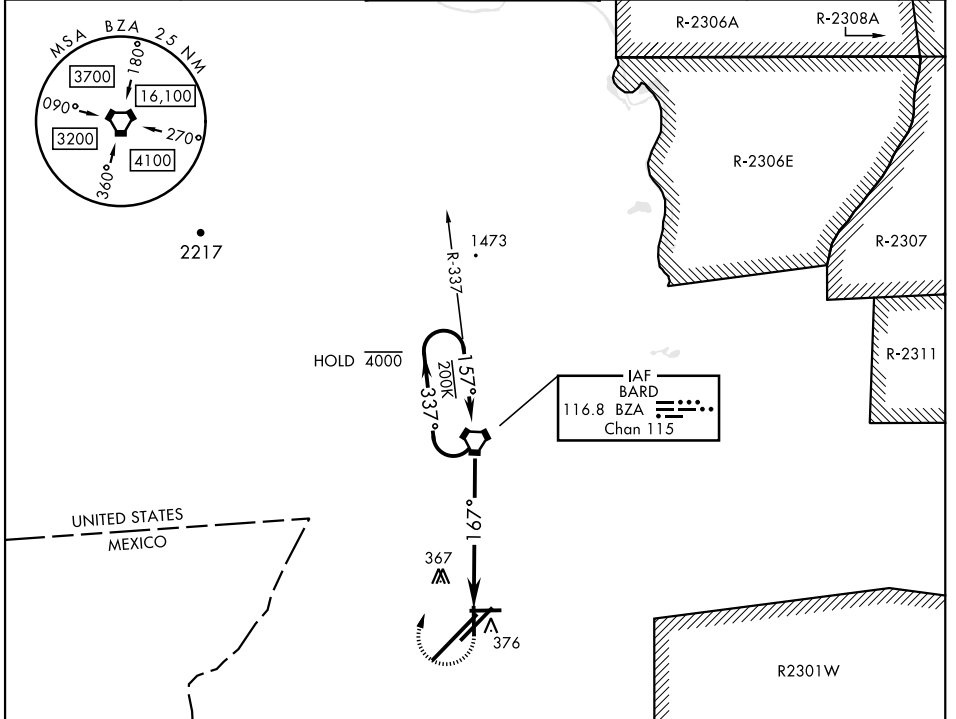
VORTAC BZA 116.8 Chan 115	APCH CRS 167°	Rwy Idg TDZE Arprt Elev 5710 197 213
---	-------------------------	--

AL-511 [USN]

YUMA MCAS/YUMA INTL (KNYL)

MISSED APPROACH: Climb to 1100, then climbing right turn to 2500 direct BZA VORTAC and hold.

ATIS★ 118.8 273.5	APP CON 124.7 371.975	TOWER★ 119.3 (CTAF) 0 377.075	GND CON 121.9 314.0	CLNC DEL 118.0 336.4	ASR/ PAR
-----------------------------	---------------------------------	--	-------------------------------	--------------------------------	-------------



CATEGORY	A	B	C	D
S-17	660-1	463 (500-1)	NA	
CIRCLING	680-1 467 (500-1)	700-1 487 (500-1)	NA	

FAF to MAP 6.0 NM					
Knots	60	90	120	150	180
Min:Sec	6:00	4:00	3:00	2:24	2:00

VOR RWY 17

SW-4, 20 MAR 2025 to 17 APR 2025

SW-4, 20 MAR 2025 to 17 APR 2025