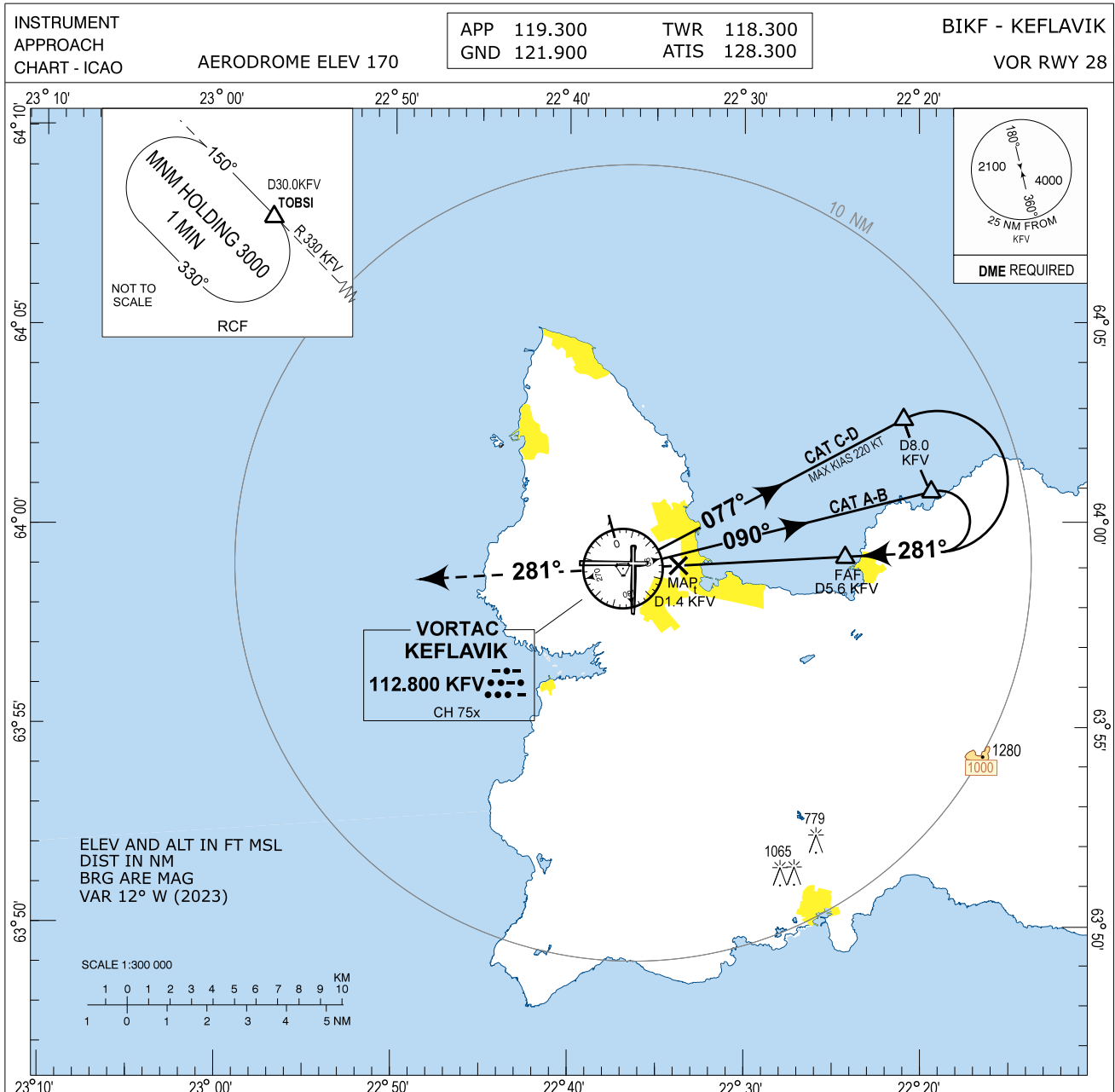


Keflavik VOR RWY 28 Instrument Approach Chart - ICAO



CHANGES: RESTRICTED AREA BIR2 REMOVED

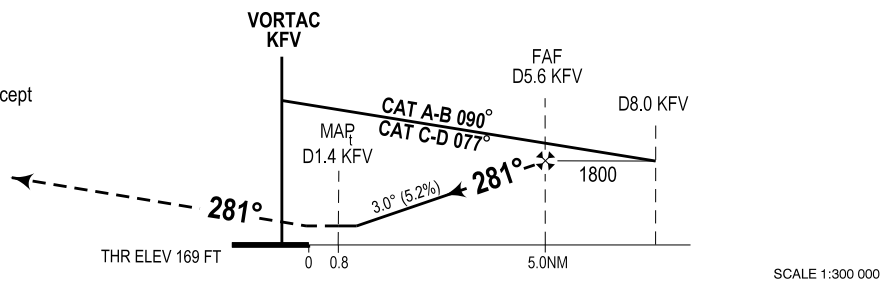
MISSED APPROACH:

Climb on radial 281° to 3000.
Expect vectoring by KEFLAVIK APP.

RCF:

At D10.0 KVF turn right on heading 010°, intercept KVF radial 330 and hold at TOBSI at 3000

TRANSITION ALT 7000



OCA (H)	A	B	C	D	Remarks
VOR - DME	480 (311)	480 (311)	500 (331)	520 (351)	
CIRCLING	600 (430)	670 (500)	870 (700)	940 (770)	

DIST TO KVF	2	3	4	5
ALTITUDE	660	980	1300	1610

Timing not authorized for defining MAP

GS	kt	80	100	120	140	160	180
FAF-D1.4 KVF (4.2 NM)	MIN:SEC	3:09	2:31	2:06	1:48	1:35	1:24
Rate of descent (5.2%)	ft/MIN	420	530	630	740	840	950

THIS PAGE INTENTIONALLY LEFT BLANK