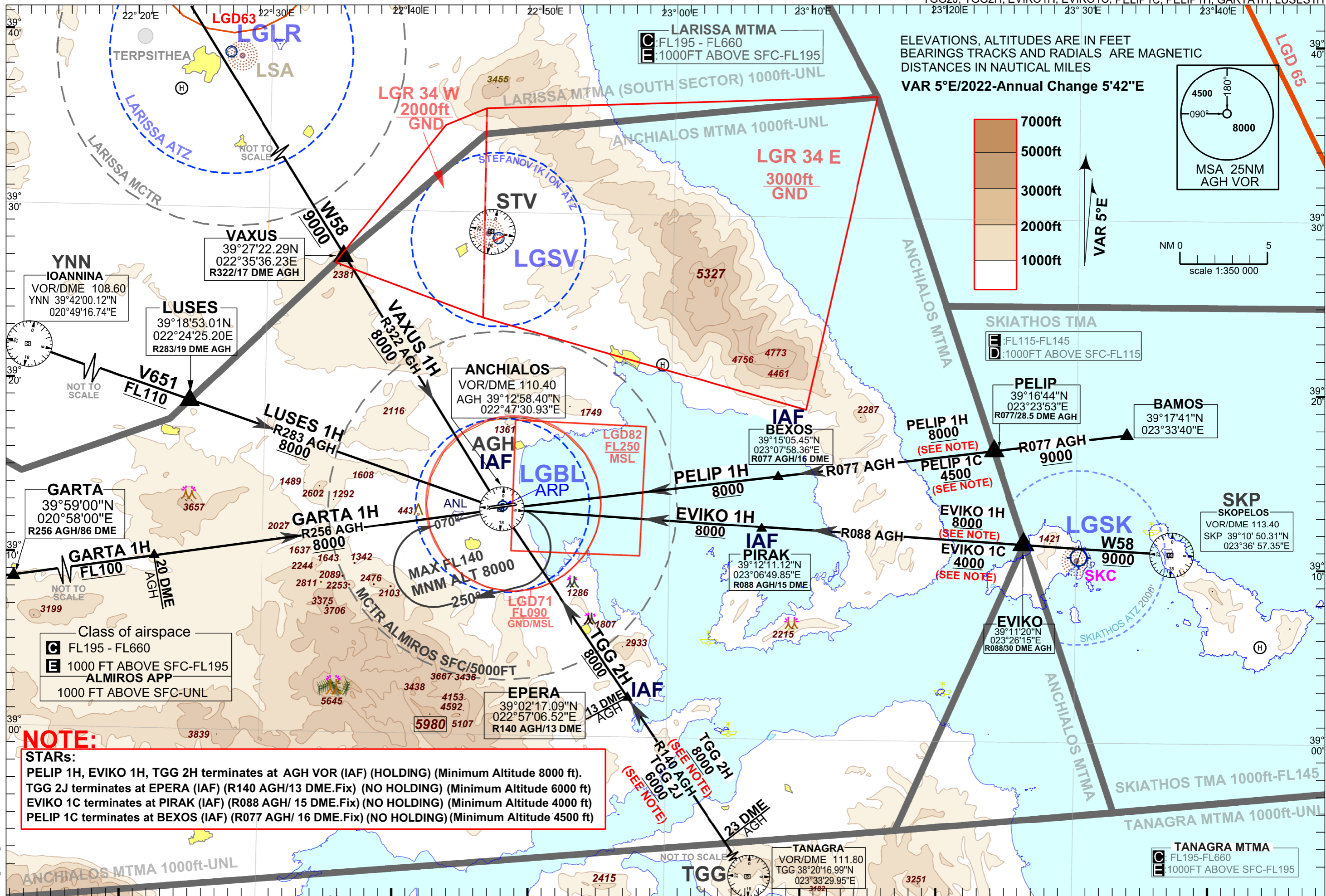


ARP 39°13'10"N - 22°47'40"E

TRANSITION ALTITUDE 9000ft

ALMIROS APP 120.350
ALMIROS TWR 122.100

TGG2J, TGG2H, EVIKO1H, EVIKO1C, PELIP1C, PELIP1H, GARTA1H, LUSES1H



ELEVATIONS, ALTITUDES ARE IN FEET
 BEARINGS TRACKS AND RADIALS ARE MAGNETIC
 DISTANCES IN NAUTICAL MILES

VAR 5°E/2022-Annual Change 5'42"E

